

THIS MAP WAS PREPARED FOR ASSESSMENT PURPOSE ONLY.

NW1/4 NE1/4 SEC.4 T.23S. R.5W. W.M.
DOUGLAS COUNTY
1" = 100'

REVISED ON
1-29-18

23 5 4AB
YONCALLA

CANCELLED NOS
400 401

SEE MAP 22 5 33

1/4
COR

3.20 CH

200
19.03 AC

9.51 CH
12.71 CH = 838.86'

FIFTH STANDARD PARALLELL SOUTH

100
3.88 AC

S89°54'E 1042.02' 1/16 COR

SW COR
DLC NO 37
NW COR
DLC NO 48

SEE
M130-45

1100
0.48 AC

220' LINE

EAST 16.46 CH = 1086.36' (DEED)
S89°54'E 1048.6' SURVEY

1705.22' EAST &
181.50' SOUTH OF
N 1/4 COR SEC 4
EAST 286.36'
1200
0.44 AC

300
6.49 AC

YONCALLA

CITY

LIMITS

32-01

LOT 4

13.41

SEE
M174-8

SEE MAP 23 5 4

NORTH 793.98'

LOT 37.13

32-03

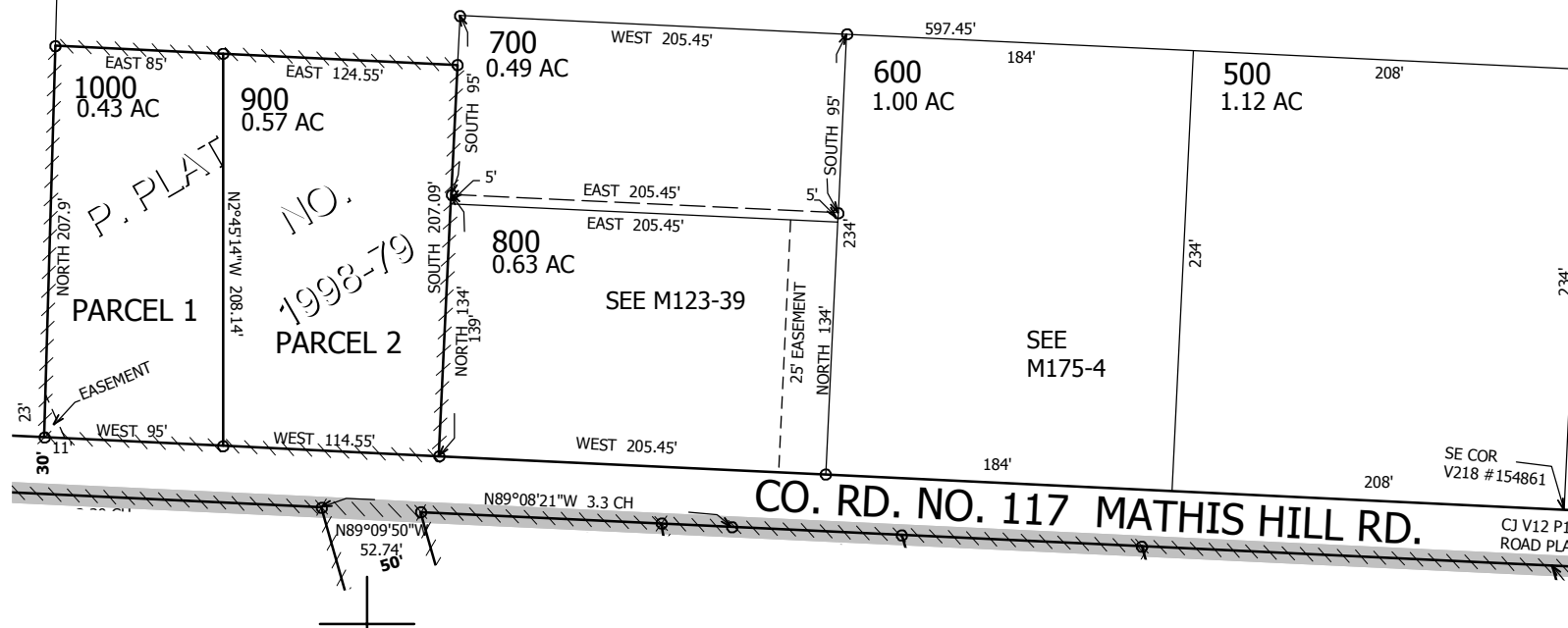
S89°54'E 751.23'

LIMITS

LINE

SEE MAP 23 5 4AA

NW COR
GEO A BURTS
DLC NO 40



SEE MAP 23 5 4AC

SEE MAP 23 5 4AA

718,000

1/16
COR

1/16
COR

4,182,000

23 5 4AB
YONCALLA