

THIS MAP WAS PREPARED FOR ASSESSMENT PURPOSE ONLY.

Upper Left:
123°17'36"W 43°36'26"N
4181601E 719548N ft

NE1/4 NE1/4 SEC.04 T.23S. R.05W. W.M.
DOUGLAS COUNTY

Date Exported 2024-02-21

230504AA
YONCALLA

CANCELLED NOS:
2500 2600 100
101 3801 200
3500 3401 1401

COR

1/16

COR

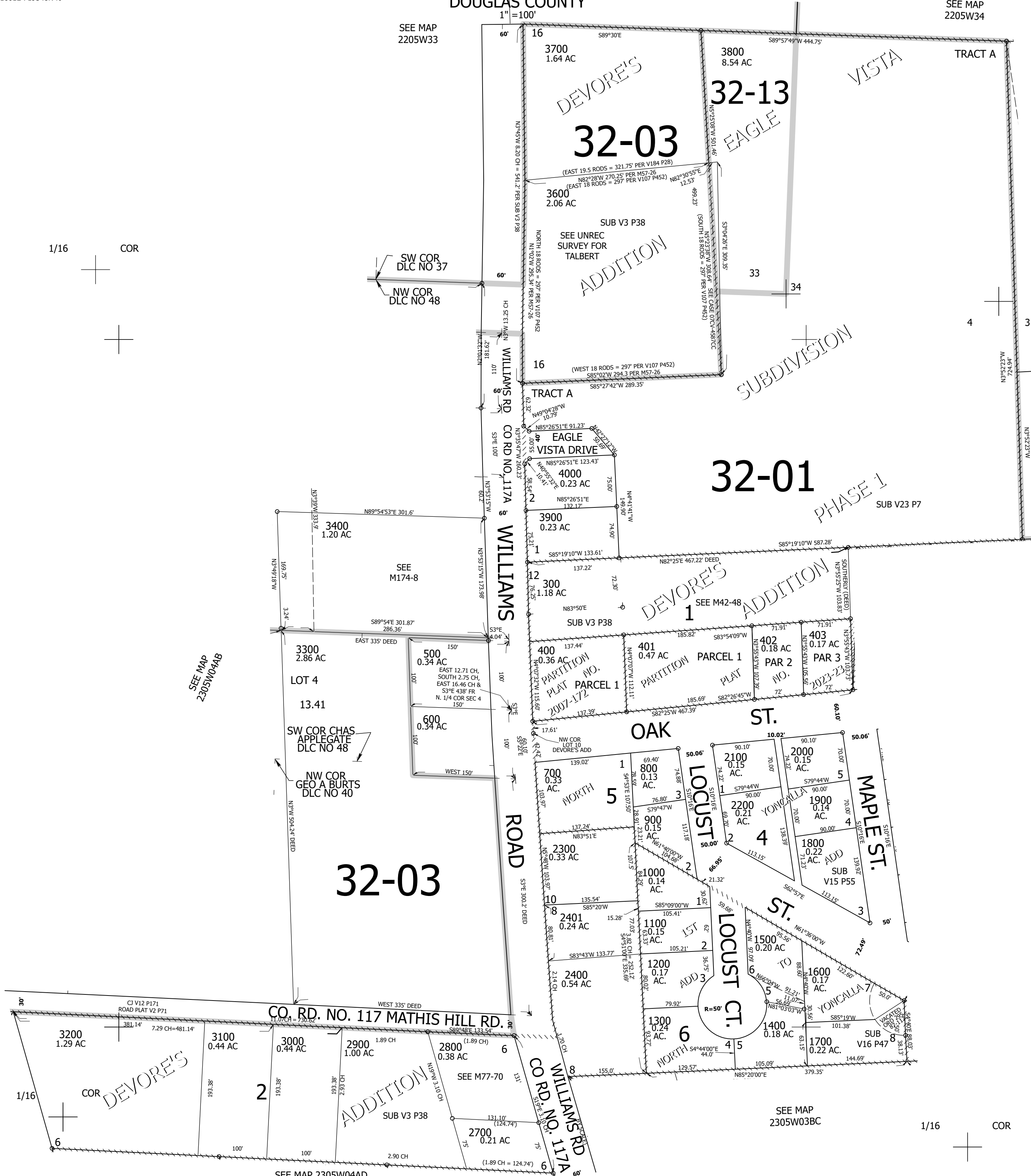
SEE MAP
2205W34

SEE MAP
2205W33

1" = 100'

SEE MAP
2305W03

SEE MAP
2305W03BB



SEE MAP
2305W04AC

1/16

COR
DEVORE'S

2

SEE MAP 2305W04AD

ADDITION
SUB V3 P38

WILLIAMS RD
CO RD NO. 117A

SEE MAP
2305W03BC

1/16

COR

230504AA
YONCALLA

Lower Right:
123°17'8"W 43°36'9"N
4183564E 717769N ft