

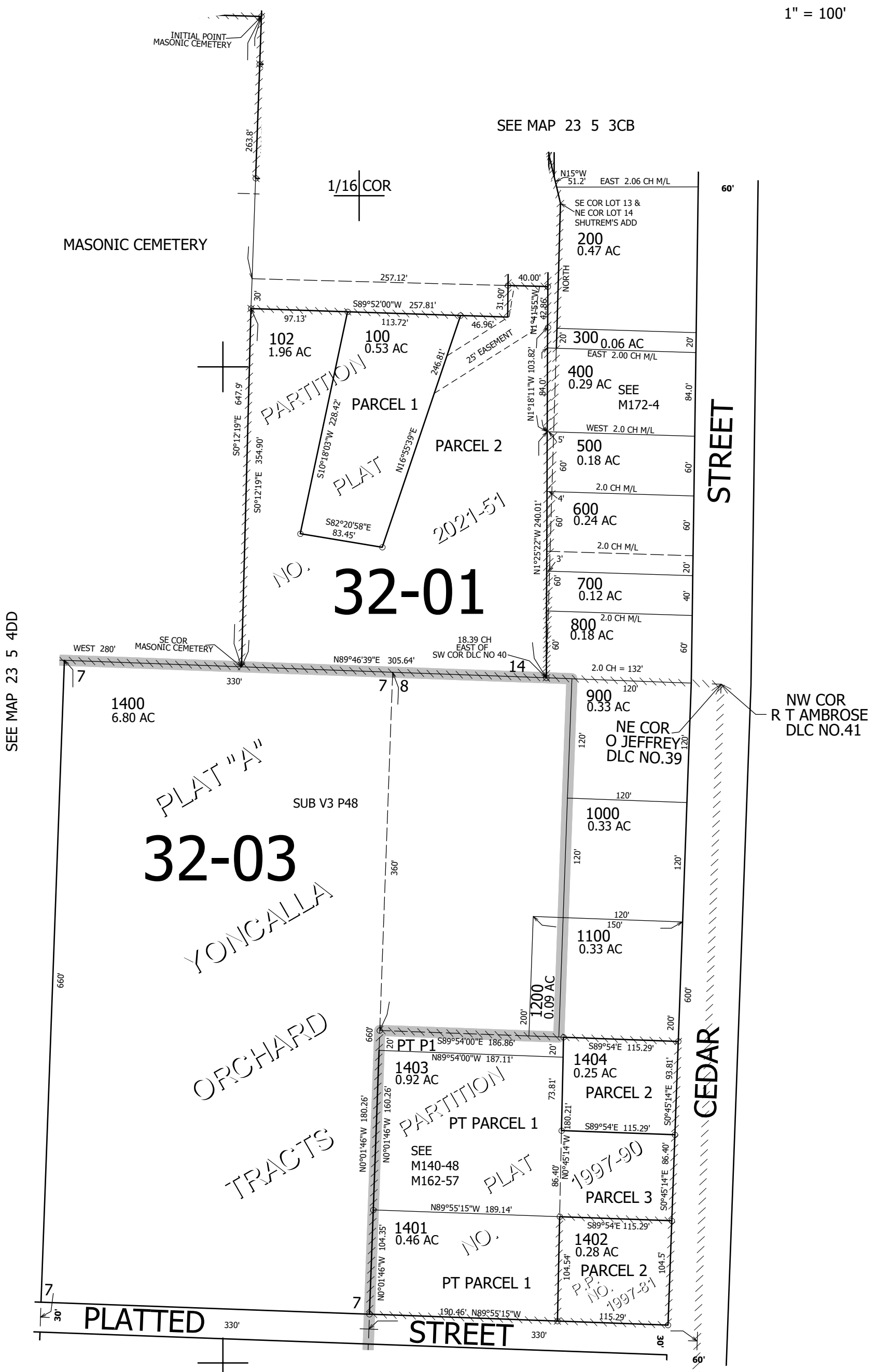
THIS MAP WAS PREPARED FOR ASSESSMENT PURPOSE ONLY.

SW1/4 SW1/4 SEC.3 T.23S. R.5W. W.M.  
DOUGLAS COUNTY

REVISED ON  
11-17-21

23 5 3CC  
YONCALLA

1" = 100'



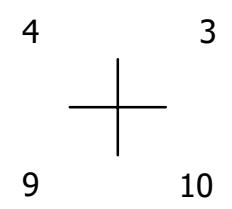
1/16 COR

CANCELLED NOS  
1101 1201 1300  
101 1405 1406

SEE MAP 23 5 3

SEE MAP 23 5 4DD

SEE MAP 23 5 9



4,184,000

1/16 COR  
23 5 3CC  
YONCALLA

714,000