

THIS MAP WAS PREPARED FOR ASSESSMENT PURPOSE ONLY.

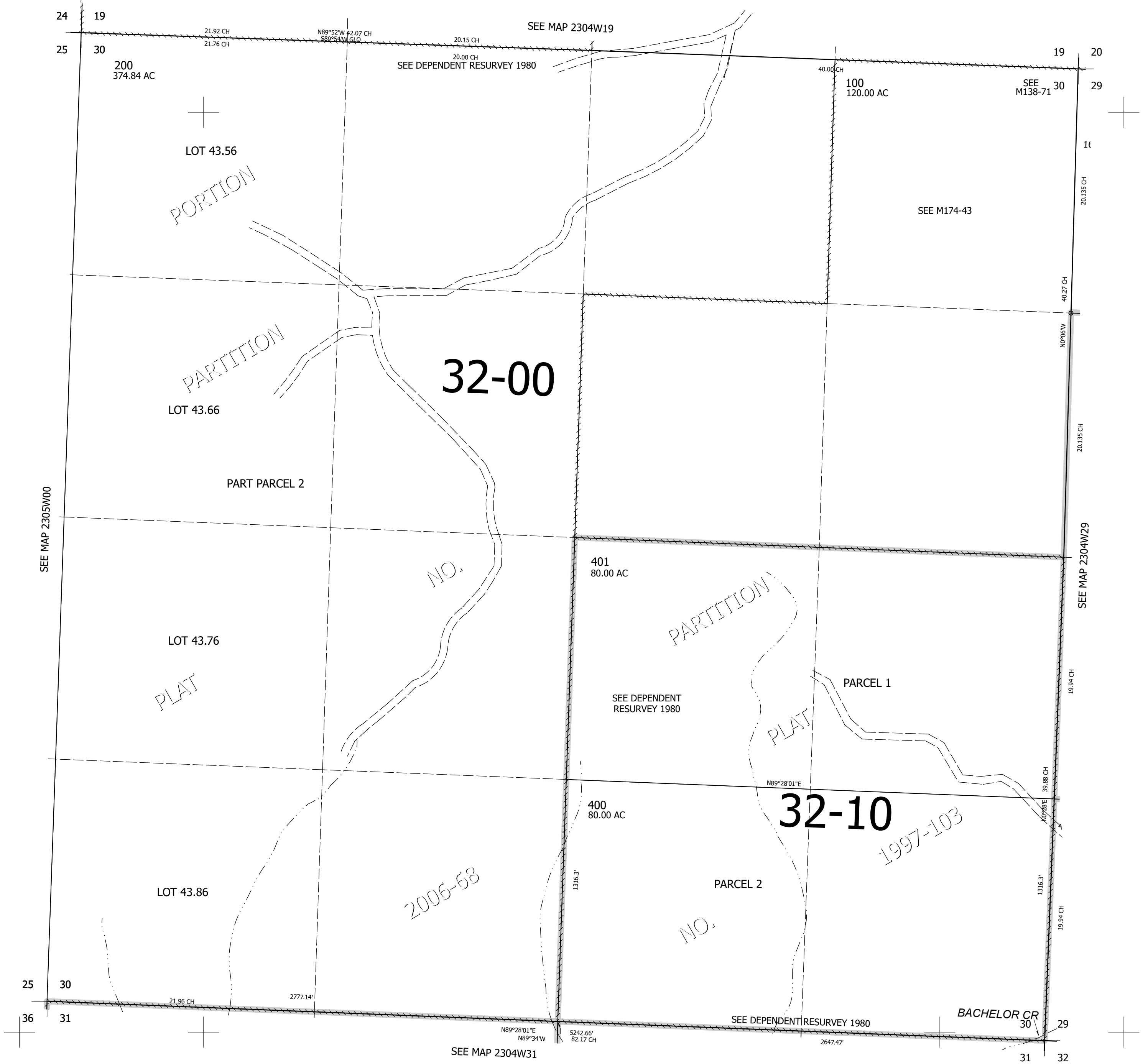
Upper Left:  
123°13'56"W 43°33'1"N  
4197048E 698313N ft

SEC.30 T.23S. R.04W. W.M.  
DOUGLAS COUNTY  
1" = 400'

Date Exported 2025-02-10

230430

CANCELLED NOS:  
300



230430

Lower Right:  
123°12'7"W 43°31'55"N  
4204898E 691358N ft