

THIS MAP WAS PREPARED FOR ASSESSMENT PURPOSE ONLY.

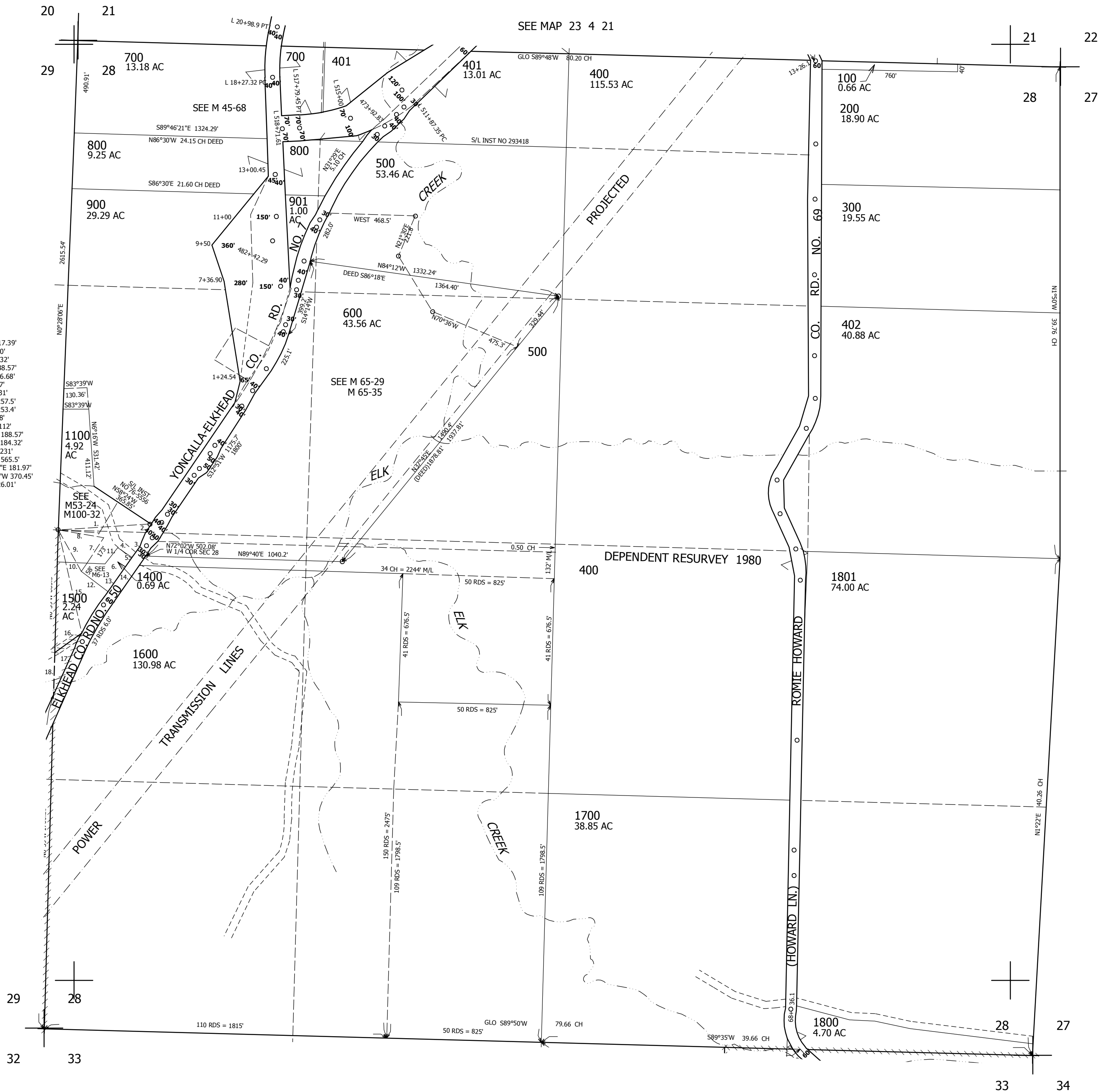
SEC.28 T.23S. R.4W. W.M.
DOUGLAS COUNTY
1" = 400'

REVISED ON
5-30-06

23 4 28

1. S85°23'W 517.39'
2. S32°51'W 60'
3. S33°49'W 132'
4. S56°11'E 188.57'
5. S33°49'W 46.68'
6. EAST 226.97'
7. N33°49'E 231'
8. N83°58'W 257.5'
9. N30°12'W 253.4'
10. EAST 281.8'
11. N29°30'E 112'
12. N56°11'W 188.57'
13. S33°49'W 184.32'
14. S33°49'W 231'
15. N14°53'W 565.5'
16. N49°10'30"E 181.97'
17. S21°23'30"W 370.45'
18. N0°39'W 26.01'

SEE MAP 23 4 29



CANCELLED NOS
1000 1200 1300

SEE MAP 23 4 00

692,000

SEE MAP 23 4 33

4,214,000

23 4 28