

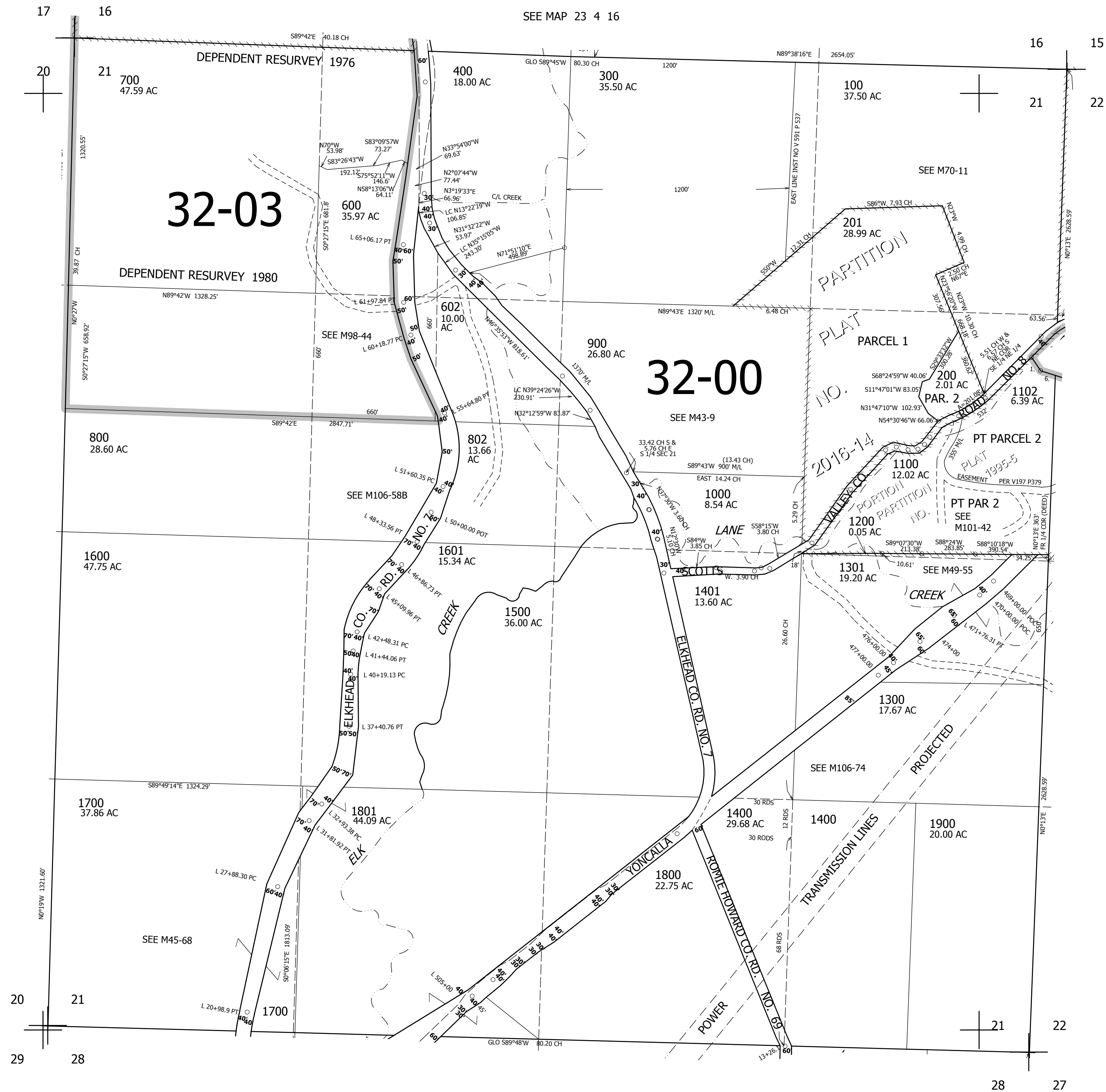
THIS MAP WAS PREPARED FOR ASSESSMENT PURPOSE ONLY.

SEC.21 T.23S. R.4W. W.M. DOUGLAS COUNTY

1" = 400'

REVISED ON 6-27-16

23 4 21



CANCELLED NOS
500 601 801
1101 900M1

PARCEL 1102
1.N36°10'09"W 55.4'
6. N74°07'35"W 90.125'

SEE MAP 23 4 20

SEE MAP 23 4 22

SEE MAP 23 4 28

697,000

4,214,000

23 4 21