

THIS MAP WAS PREPARED FOR ASSESSMENT PURPOSE ONLY.

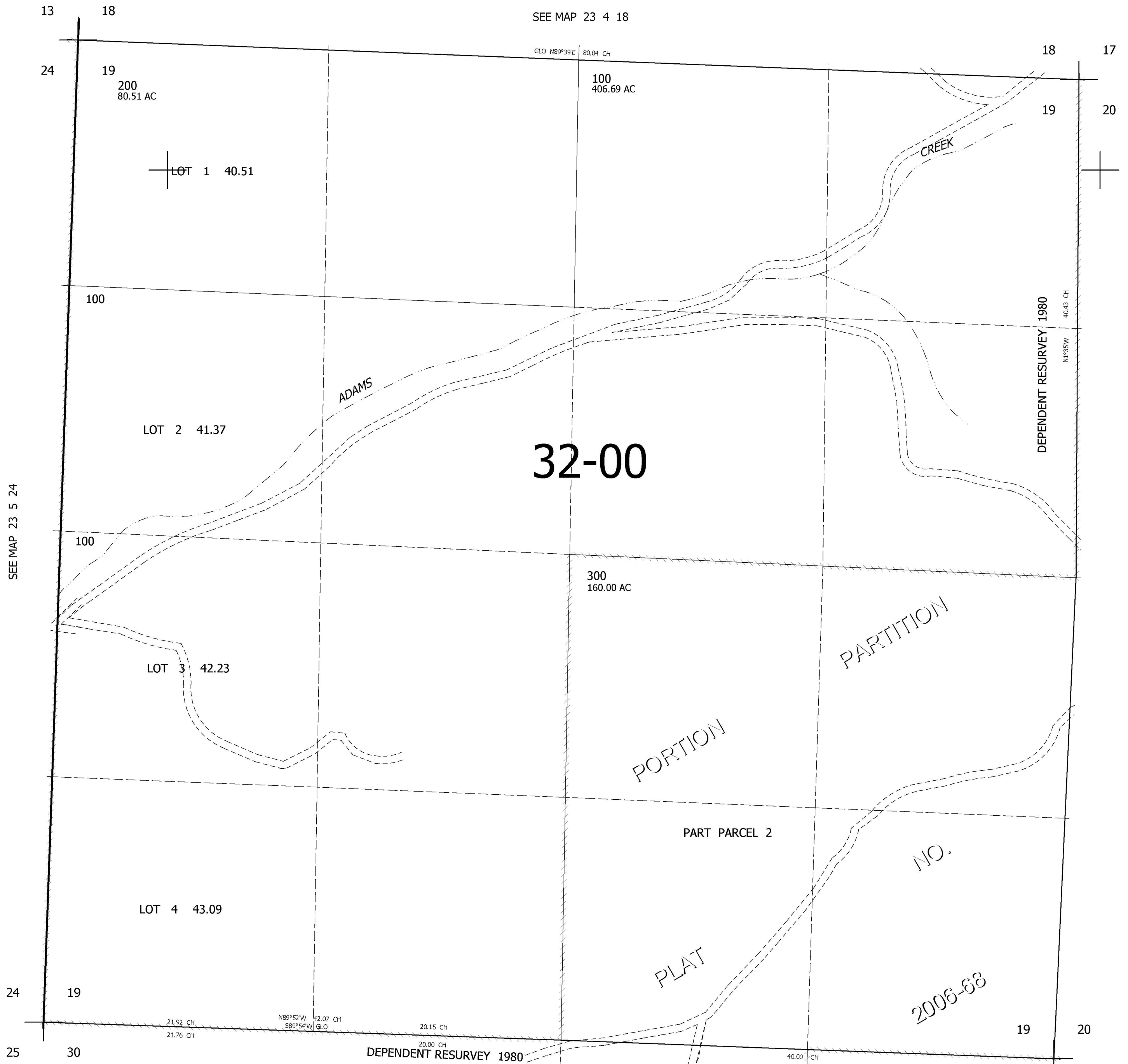
SEC.19 T.23S. R.4W. W.M.
DOUGLAS COUNTY

REVISED ON
8-8-06

23 4 19

1" = 400'

CANCELLED NOS



4,199,000

SEE MAP 23 4 30

697,000

23 4 19