

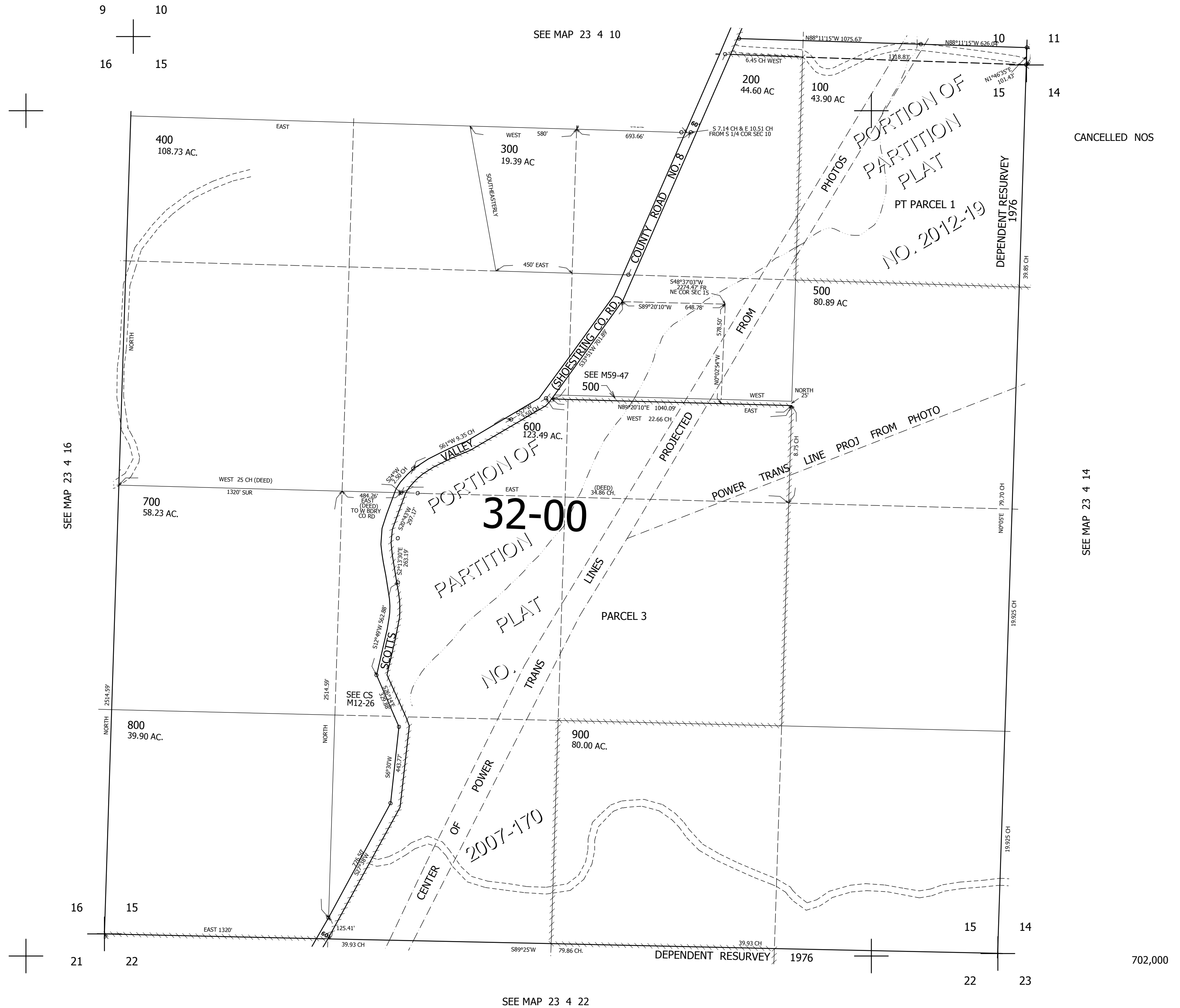
THIS MAP WAS PREPARED FOR ASSESSMENT PURPOSE ONLY.

SEC.15 T.23S. R.4W. W.M.
DOUGLAS COUNTY

REVISED ON
12-6-12

23 4 15

1" = 400'



SEE MAP 23 4 16

SEE MAP 23 4 10

CANCELLED NOS

SEE MAP 23 4 14

SEE MAP 23 4 22

702,000

4,219,000

23 4 15