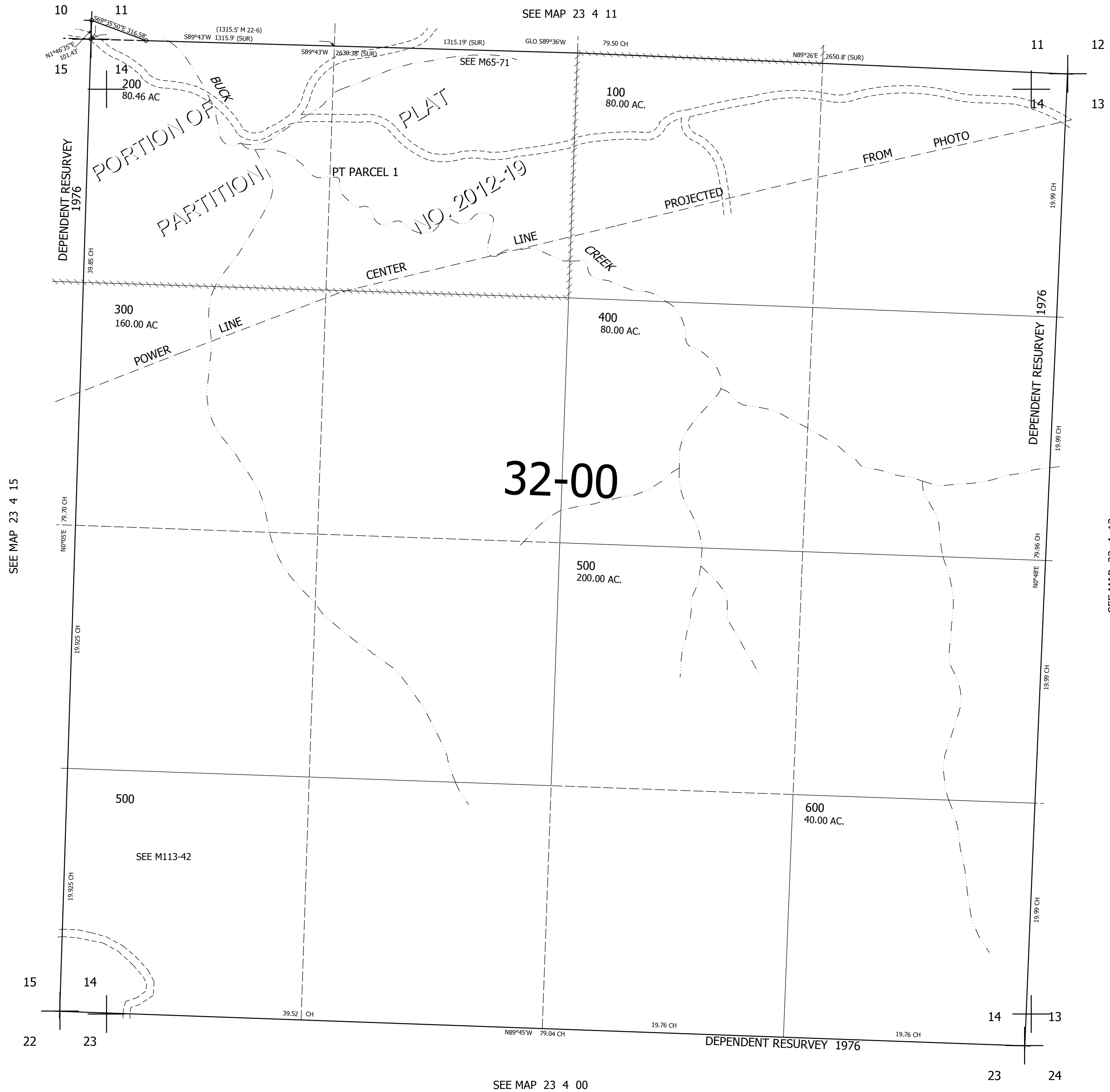


THIS MAP WAS PREPARED FOR ASSESSMENT PURPOSE ONLY.

SEC.14 T.23S. R.4W. W.M.  
DOUGLAS COUNTY  
1" = 400'

REVISED ON  
12-6-12

23 4 14



CANCELLED NOS

32-00

SEE MAP 23 4 13

SEE MAP 23 4 15

SEE MAP 23 4 00

702,000

4,225,000

23 4 14