

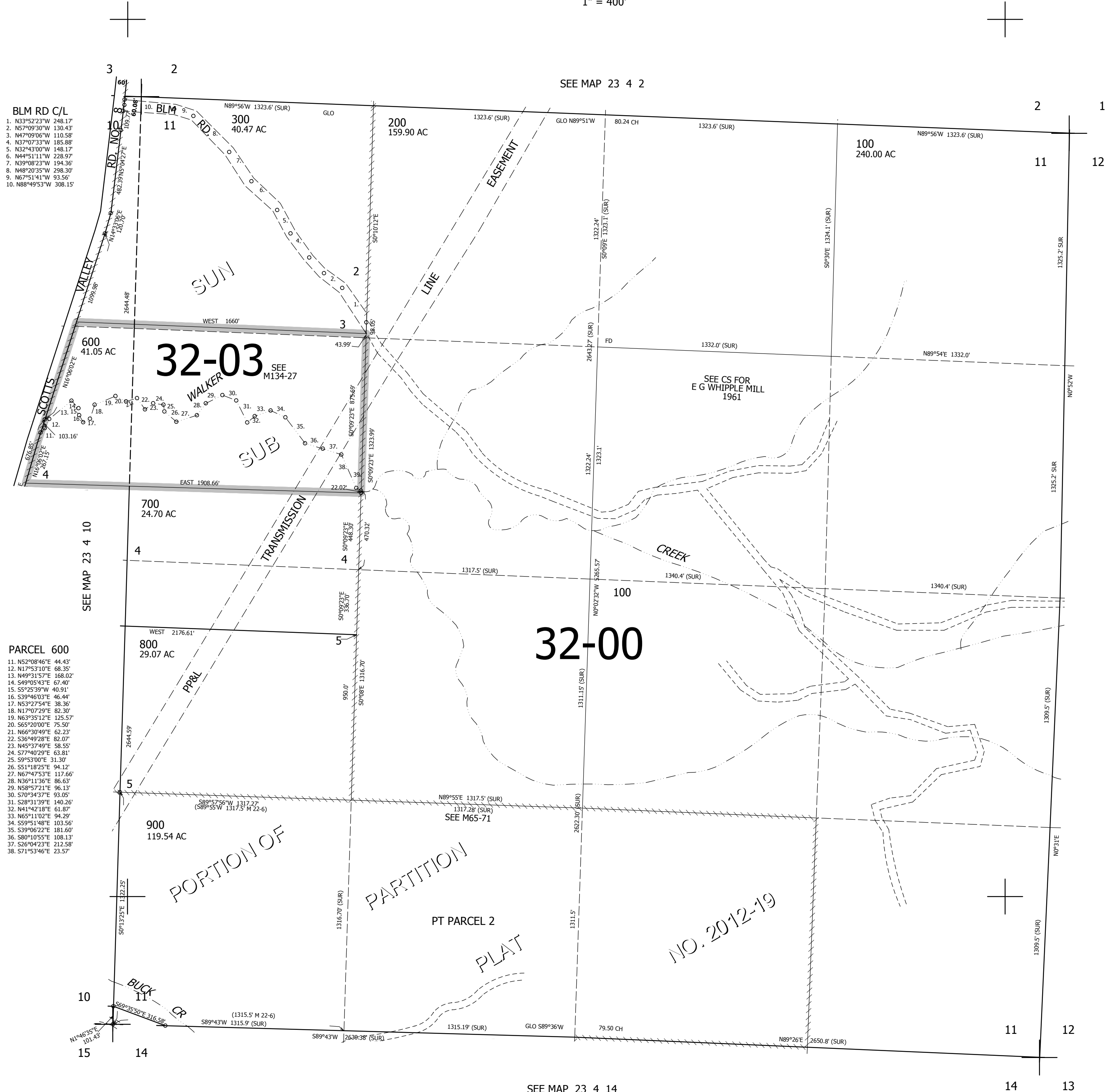
THIS MAP WAS PREPARED FOR ASSESSMENT PURPOSE ONLY.

SEC.11 T.23S. R.4W. W.M. DOUGLAS COUNTY

1" = 400'

REVISED ON 12-6-12

23 4 11



- BLM RD C/L
- N33°52'23"W 248.17'
  - N57°09'30"W 130.43'
  - N47°09'06"W 110.58'
  - N37°07'33"W 185.88'
  - N32°43'00"W 148.17'
  - N44°51'11"W 228.97'
  - N39°08'23"W 194.36'
  - N48°20'35"W 298.30'
  - N67°51'41"W 93.56'
  - N88°49'53"W 308.15'

- PARCEL 600
- N52°08'46"E 44.43'
  - N17°53'10"E 68.35'
  - N49°31'57"E 168.02'
  - S49°05'43"E 67.40'
  - S5°25'39"W 40.91'
  - S39°46'03"E 46.44'
  - N53°27'54"E 38.36'
  - N17°07'29"E 82.30'
  - N63°35'12"E 125.57'
  - S65°20'00"E 75.50'
  - N66°30'49"E 62.23'
  - S36°49'28"E 82.07'
  - N45°37'49"E 58.55'
  - S77°40'29"E 63.81'
  - S9°53'00"E 31.30'
  - S51°18'25"E 94.12'
  - N67°47'53"E 117.66'
  - N36°11'36"E 86.63'
  - N58°57'21"E 96.13'
  - S70°34'37"E 93.05'
  - S28°31'39"E 140.26'
  - N41°42'18"E 61.87'
  - N65°11'02"E 94.29'
  - S59°51'48"E 103.56'
  - S39°06'22"E 181.60'
  - S80°10'55"E 108.13'
  - S26°04'23"E 212.58'
  - S71°53'46"E 23.57'

CANCELLED NOS  
201 400 501  
500 901

SEE MAP 23 4 12

708,000

SEE MAP 23 4 14

4,225,000

23 4 11