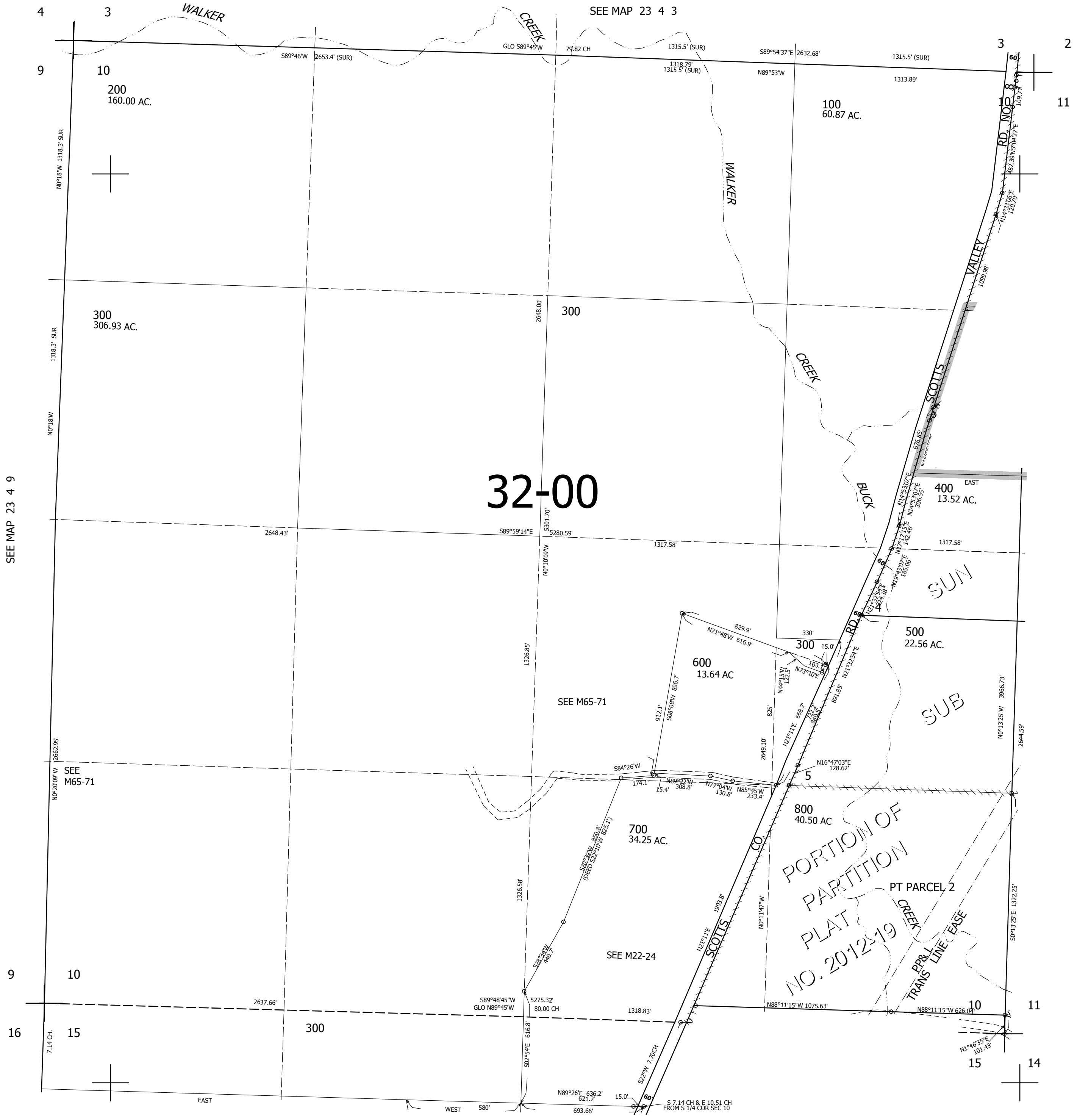


THIS MAP WAS PREPARED FOR ASSESSMENT PURPOSE ONLY.

SEC.10 T.23S. R.4W. W.M.  
DOUGLAS COUNTY  
1" = 400'

REVISED ON  
12-6-12

23 4 10



32-00

SEE MAP 23 4 9

SEE MAP 23 4 11

CANCELLED NOS  
801

SEE MAP 23 4 15

707,000

4,220,000

23 4 10