

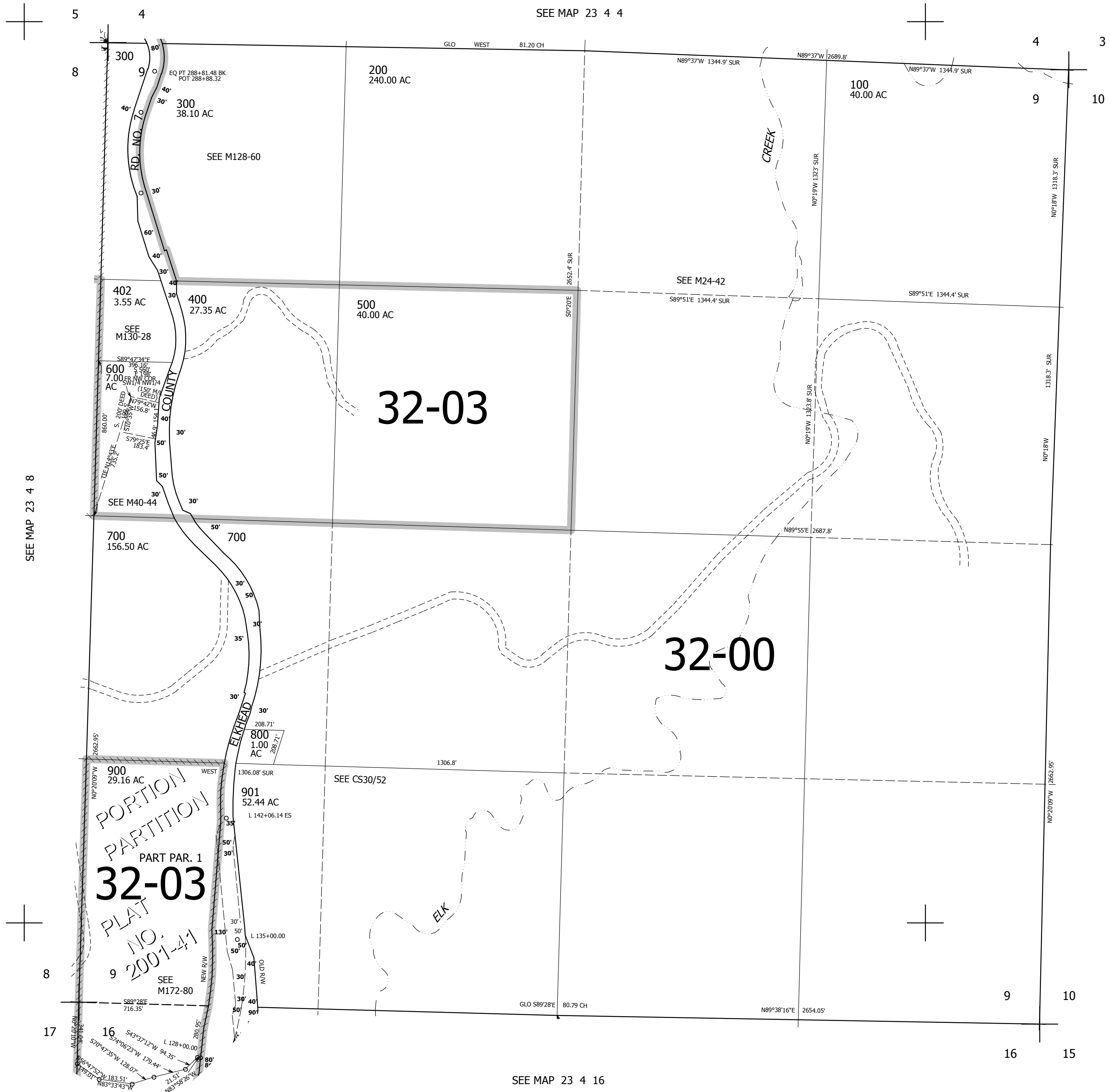
THIS MAP WAS PREPARED FOR ASSESSMENT PURPOSE ONLY.

SEC.9 T.23S. R.4W. W.M.
DOUGLAS COUNTY

1" = 400'

REVISED ON
4-12-17

23 4 9



CANCELLED NOS
900M1 901M1 401

SEE MAP 23 4 10

SEE MAP 23 4 8

SEE MAP 23 4 16

708,000

4,214,000

23 4 9