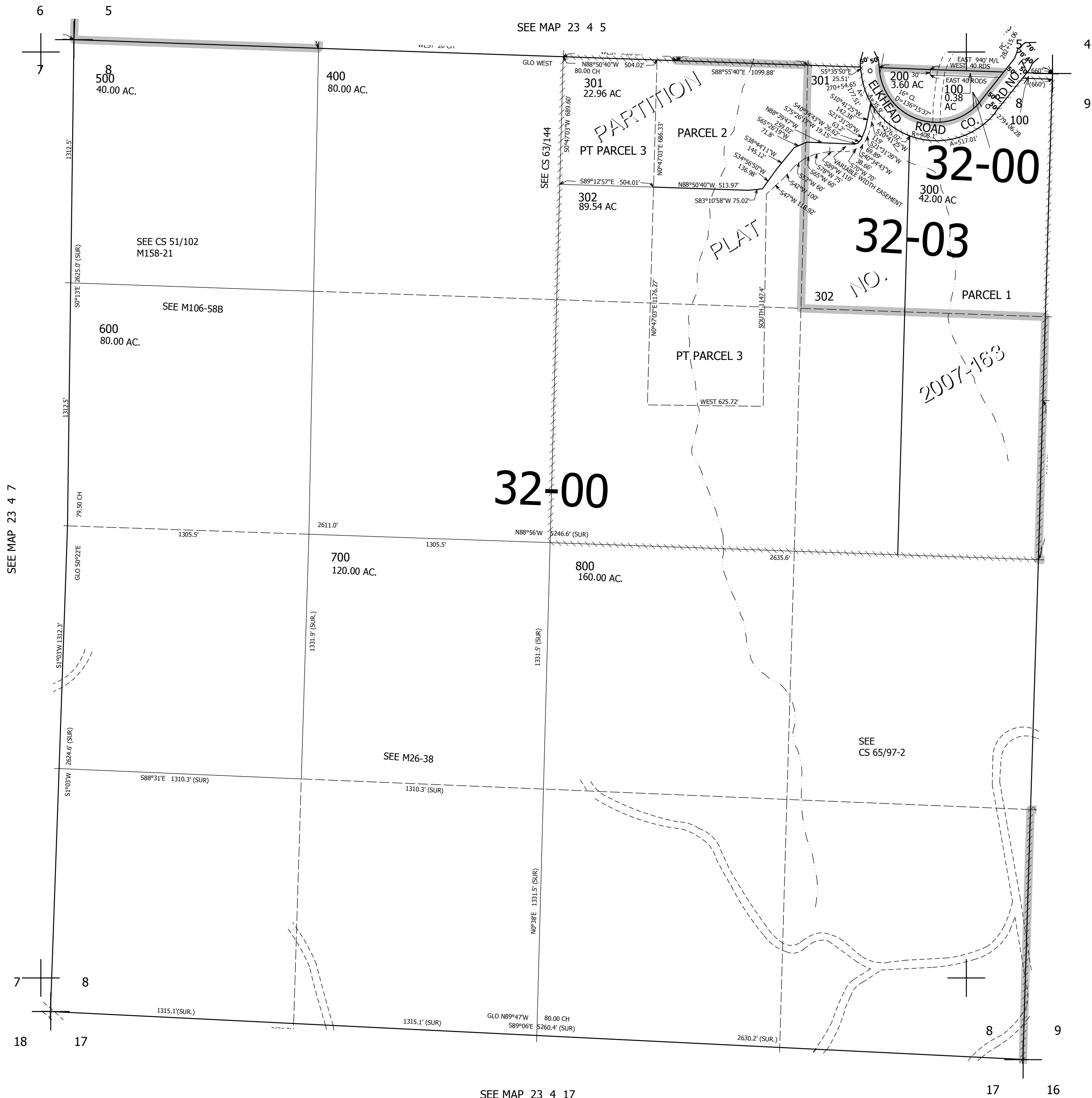


THIS MAP WAS PREPARED FOR ASSESSMENT PURPOSE ONLY.

SEC.8 T.23S. R.4W. W.M.
DOUGLAS COUNTY
1" = 400'

REVISED ON
8-13-19

23 4 8



CANCELLED NOS
303 304 305

SEE MAP 23 4 7

SEE MAP 23 4 9

SEE MAP 23 4 17

708,000

4,209,000

23 4 8