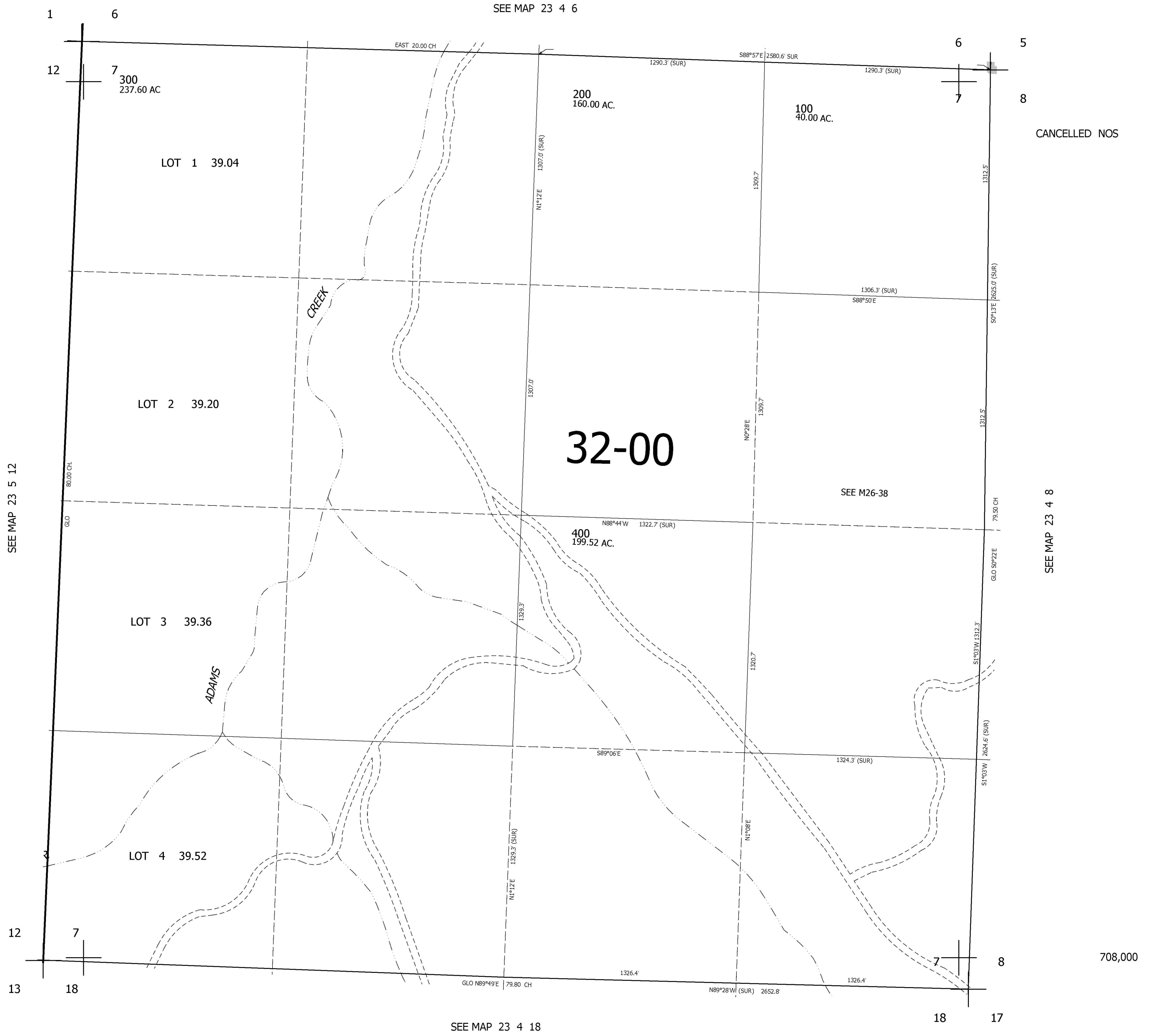


THIS MAP WAS PREPARED FOR ASSESSMENT PURPOSE ONLY.

SEC.7 T.23S. R.4W. W.M.  
DOUGLAS COUNTY  
1" = 400'

REVISED ON

23 4 7



SEE MAP 23 5 12

SEE MAP 23 4 8

SEE MAP 23 4 18

4,204,000

23 4 7