

THIS MAP WAS PREPARED FOR ASSESSMENT PURPOSE ONLY.

Upper Left:
123°13'58"W 43°36'29"N
4197580E 719365N ft

SEC.06 T.23S. R.04W. W.M.
DOUGLAS COUNTY
1" = 400'

Date Exported 2025-11-18

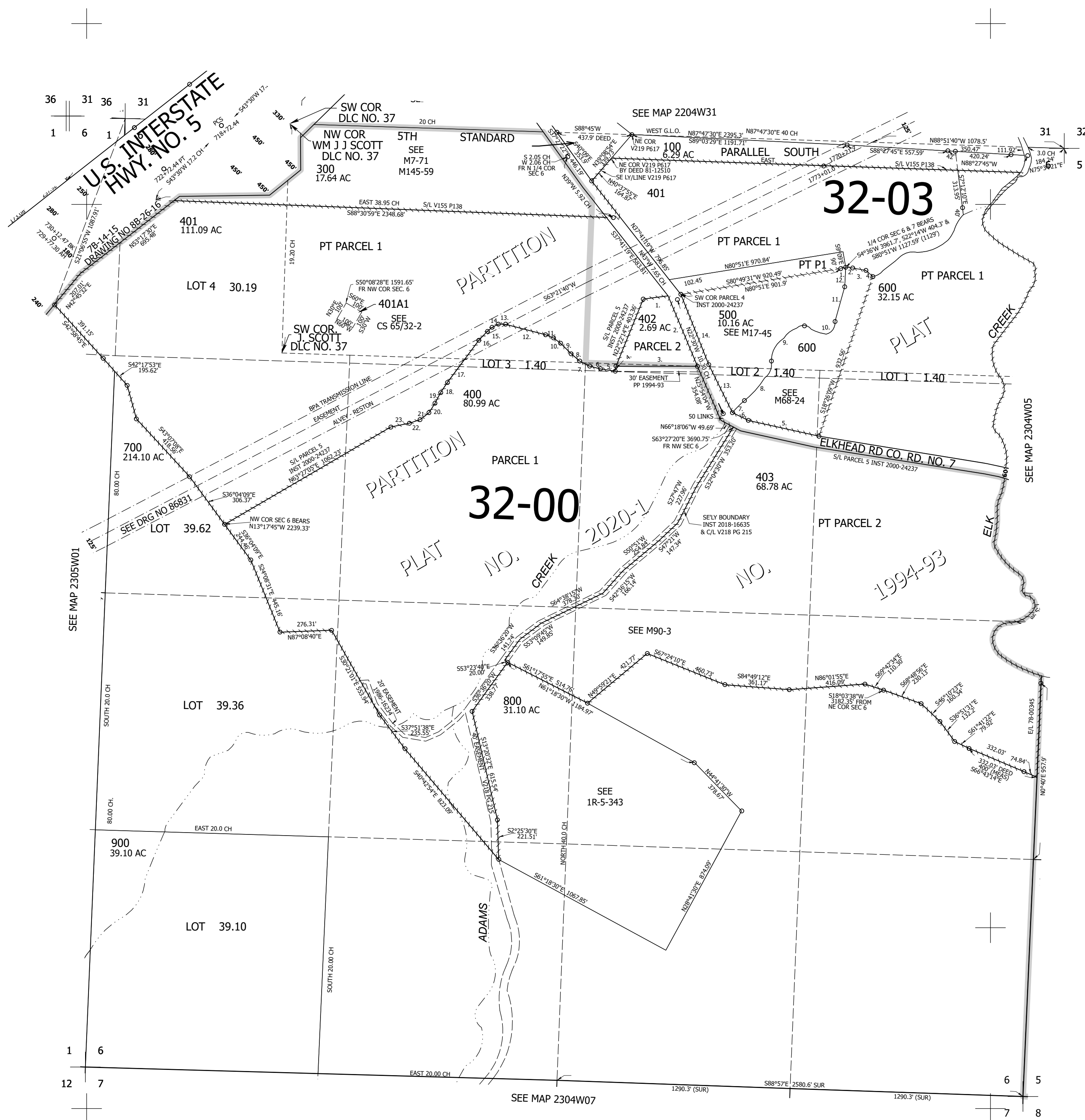
230406

CANCELLED NOS:
200 101 404
405

- PARCELS
500 & 600
1. N80°51'E 20'
 2. S85°57'56"E 33.3'
 3. S79°13'19"E 79.87'
 4. S48°58'57"E 47.98'
 5. N78°09'39"W 394.54'
 6. N66°18'06"W 89.83'
 7. N33°58'E 82'
 8. N35°10'E 276.3'
 9. N42°49'E 283.8'
 10. N82°15'E 162.5'
 11. N16°23'E 200.6'
 12. NORTH 100'
 13. N26°10"W 304.2'
 14. N22°03"W 427.3'

- PARCEL 402
1. N80°49'26"E 150.04'
 2. S22°02'56"E 426.22'
 3. N89°46'00"E 461.64'

- PP 2020-1
PARCEL 400
4. S9°10'07"W 28.24'
 5. N80°49'54"W 81.79'
 6. N76°15'43"W 61.61'
 7. N62°57'38"W 61.75'
 8. N49°39'37"W 61.60'
 9. N45°05'34"W 82.58'
 10. N52°39'37"W 48.46'
 11. N67°47'42"W 48.46'
 12. N75°21'44"W 227.58'
 13. N89°08'01"W 39.99'
 14. N63°19'25"E 33.21'
 15. N49°33'07"E 33.21'
 16. N43°07'50"E 68.00'
 17. N36°42'33"E 291.50'
 18. N33°52'38"E 67.01'
 19. N28°12'49"E 67.02'
 20. N32°23'24"E 62.07'
 21. N51°52'54"E 62.35'
 22. N71°22'23"E 62.07'
 23. N78°22'54"E 105.54'



SEE MAP 2305W01

1 6

12 7

SEE MAP 2304W07

SEE MAP 2304W05

1290.3' (SUR)

S88°57'E 2580.6' SUR

1290.3' (SUR)

230406

Lower Right:
123°12'9"W 43°35'23"N
4205429E 712410N ft