

THIS MAP WAS PREPARED FOR ASSESSMENT PURPOSE ONLY.

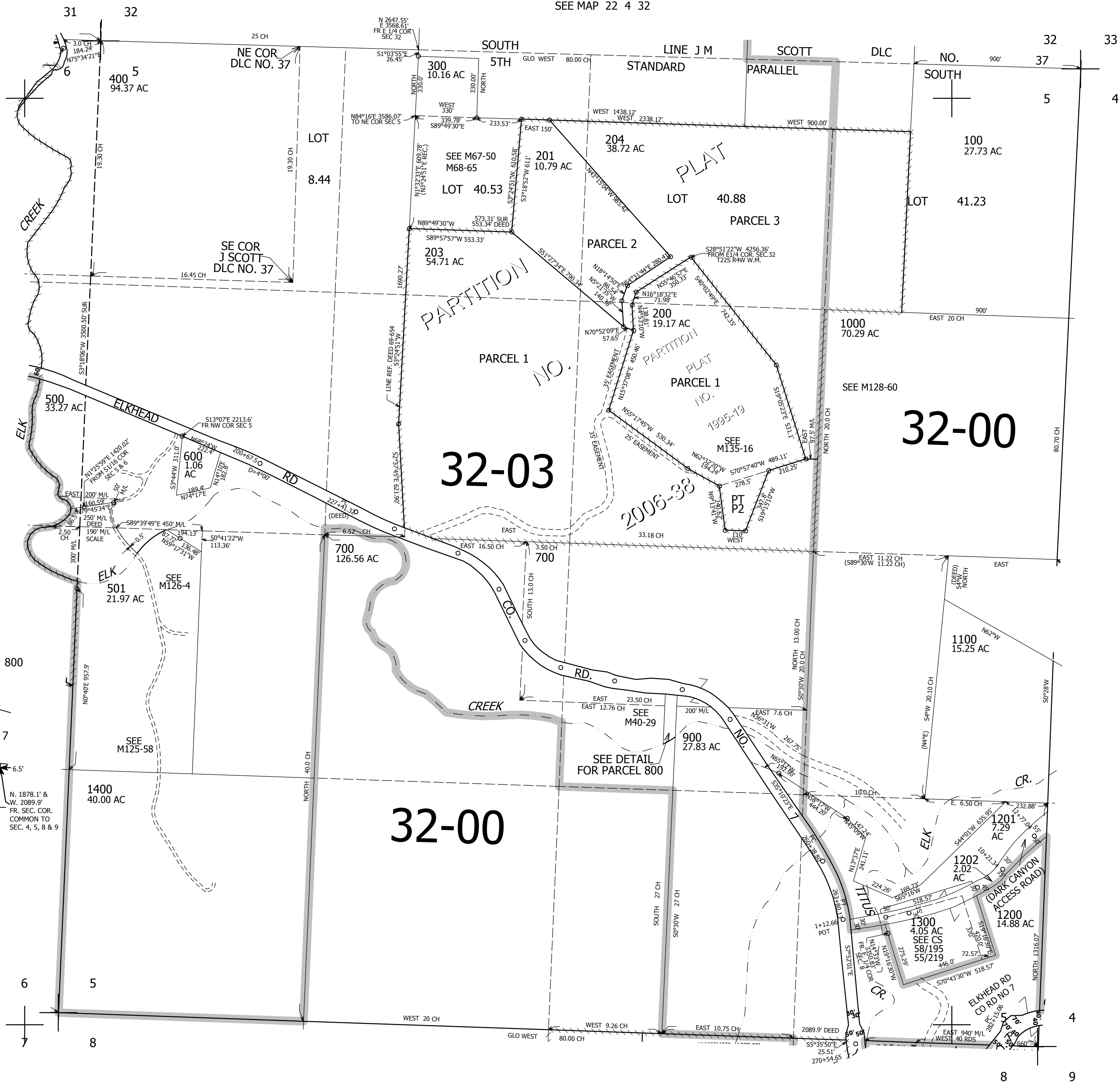
SEC.5 T.23S. R.4W. W.M. DOUGLAS COUNTY

REVISED ON 1-10-18

23 4 5

1" = 400'

SEE MAP 22 4 32



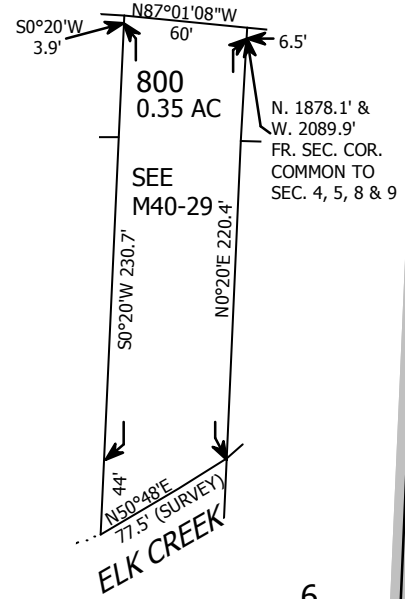
CANCELLED NOS 202 502 503

SEE MAP 23 4 6

SEE MAP 23 4 4

DETAIL PARCEL 800 1" = 100'

CO. RD. NO. 7



SEE MAP 23 4 8

4,209,000

713,000

23 4 5