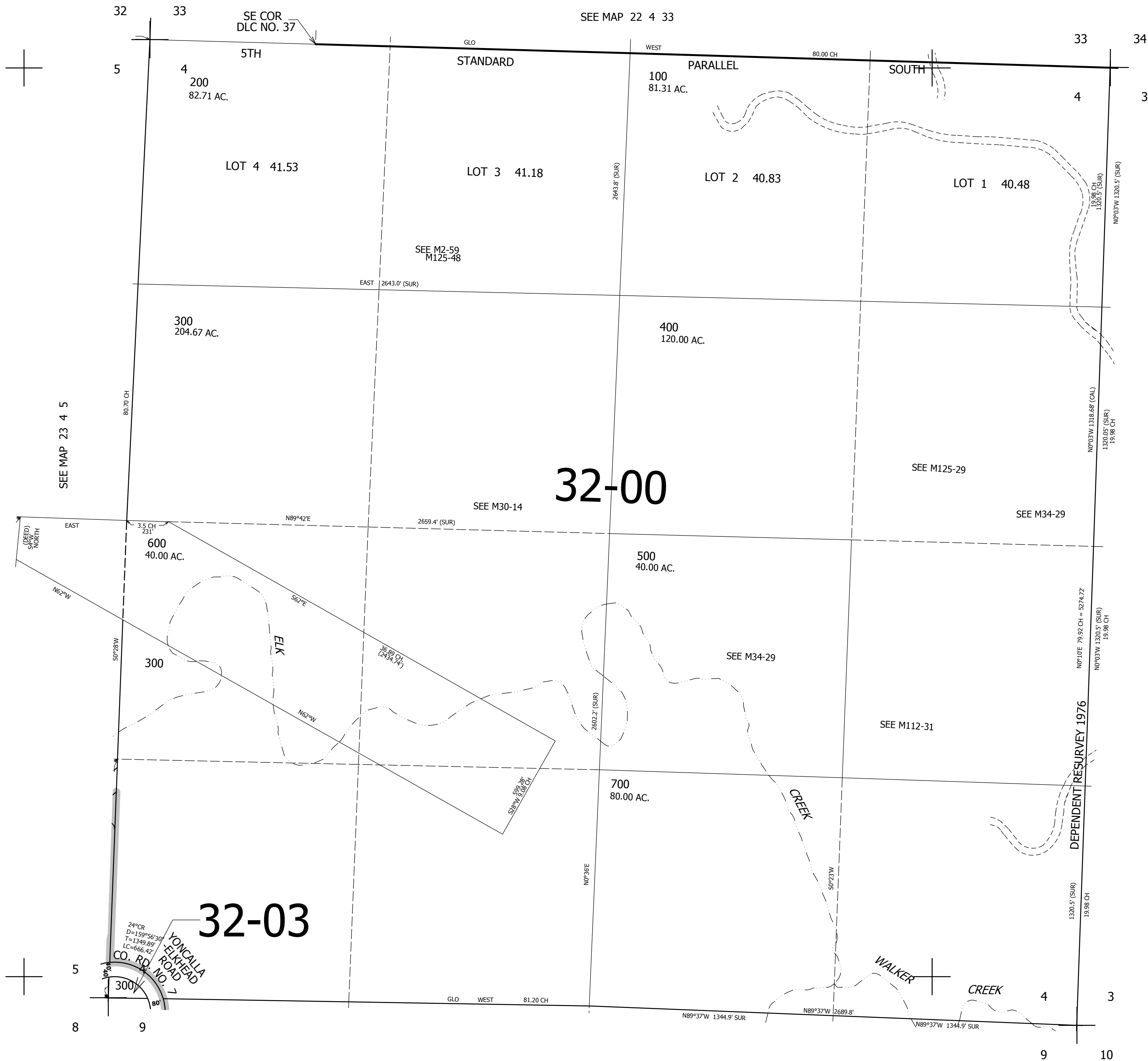


THIS MAP WAS PREPARED FOR ASSESSMENT PURPOSE ONLY.

SEC.4 T.23S. R.4W. W.M.
DOUGLAS COUNTY
1" = 400'

REVISED ON
2-29-12

23 4 4



CANCELLED NOS
600M1

SEE MAP 23 4 3

713,000

SEE MAP 23 4 9

4,214,000

23 4 4