

THIS MAP WAS PREPARED FOR ASSESSMENT PURPOSE ONLY.

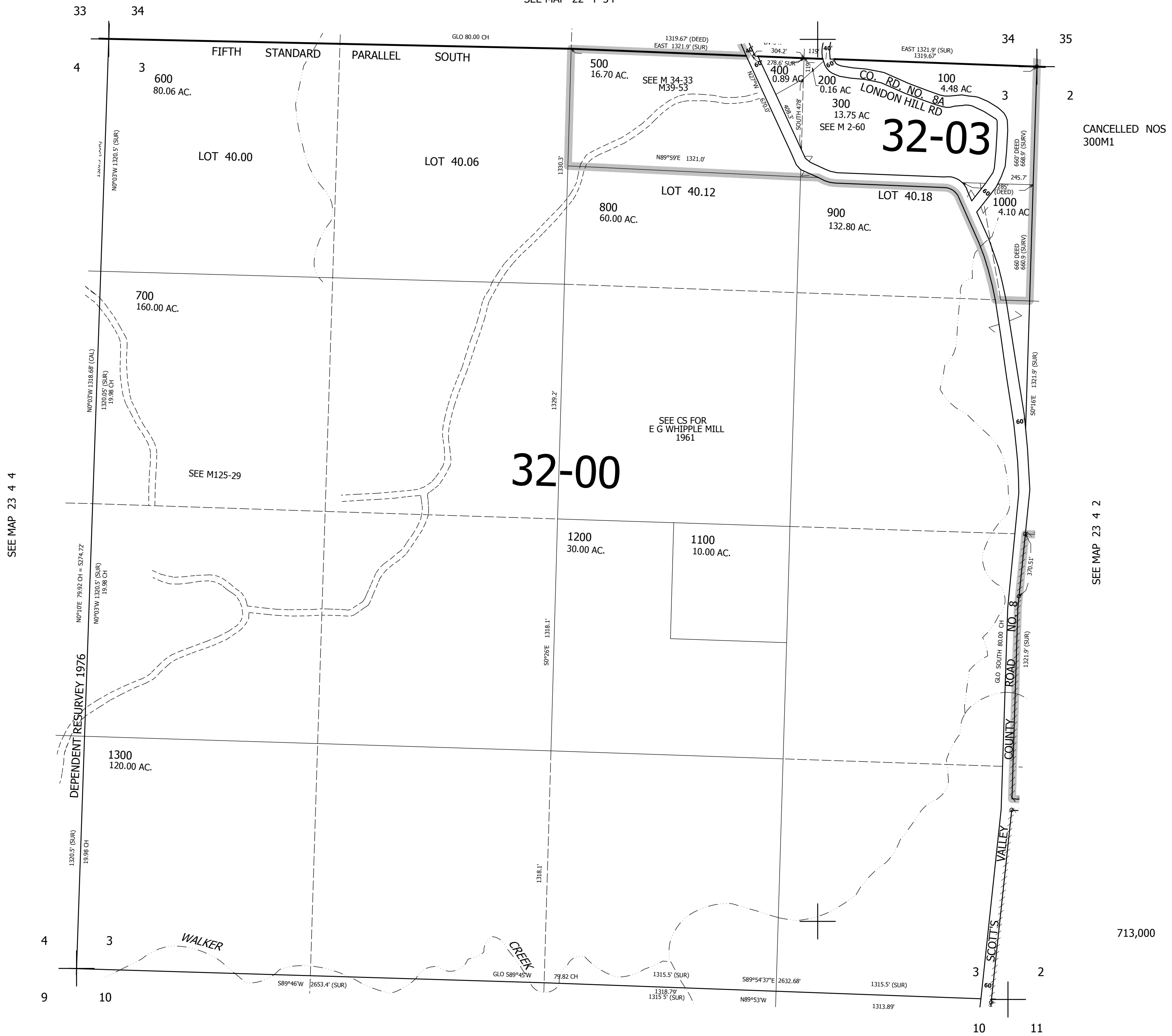
SEC.3 T.23S. R.4W. W.M. DOUGLAS COUNTY

REVISED ON
2-29-12

23 4 3

1" = 400'

SEE MAP 22 4 34



SEE MAP 23 4 4

SEE MAP 23 4 2

CANCELLED NOS
300M1

32-00

32-03

713,000

SEE MAP 23 4 10

4,219,000

23 4 3