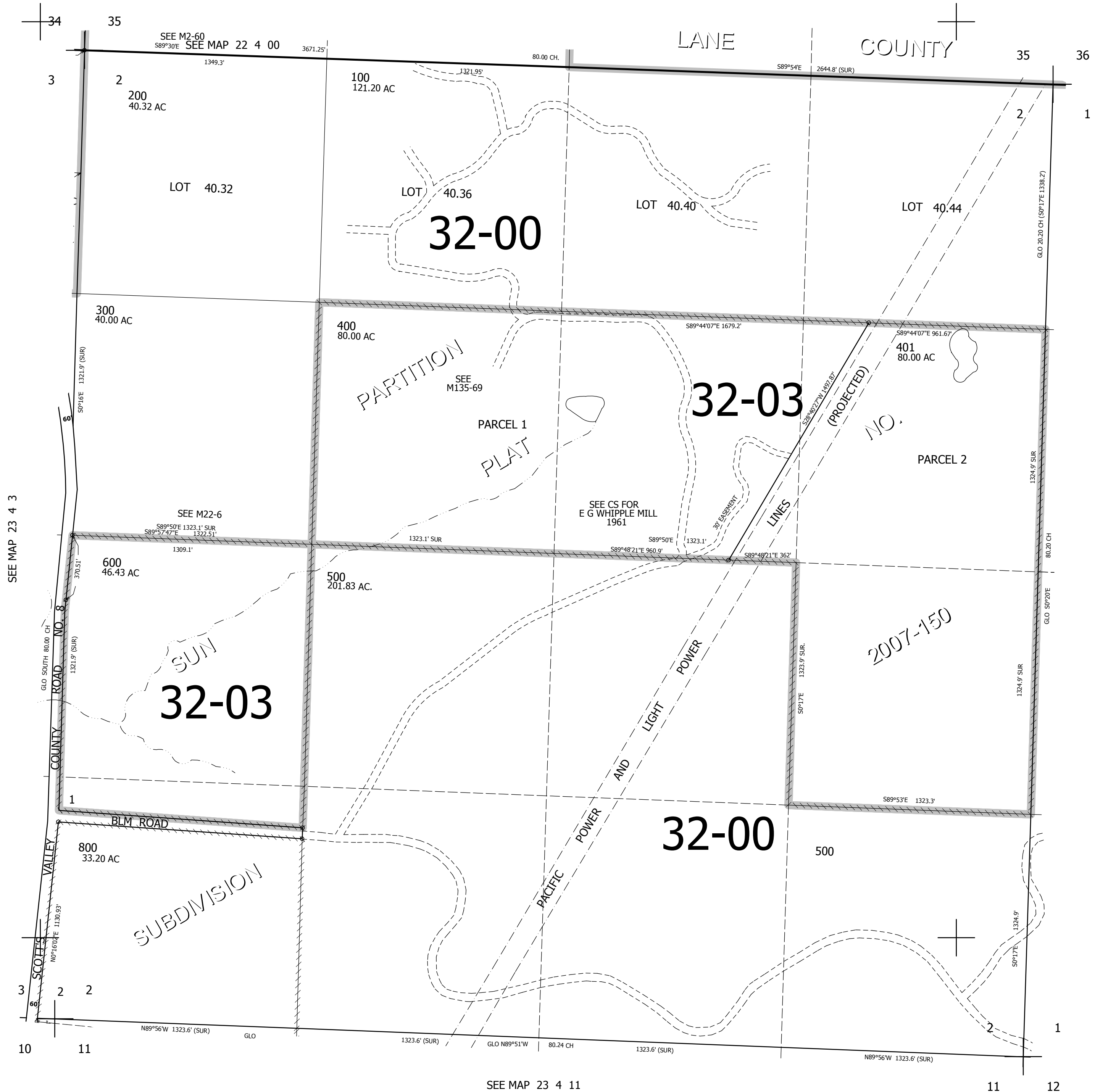


THIS MAP WAS PREPARED FOR ASSESSMENT PURPOSE ONLY.

SEC.2 T.23S. R.4W. W.M.  
DOUGLAS COUNTY  
1" = 400'

REVISED ON  
2-29-12

23 4 2



CANCELLED NOS  
700

SEE MAP 23 4 00

713,000

SEE MAP 23 4 11

4,225,000

23 4 2