

THIS MAP WAS PREPARED FOR
ASSESSMENT PURPOSE ONLY.

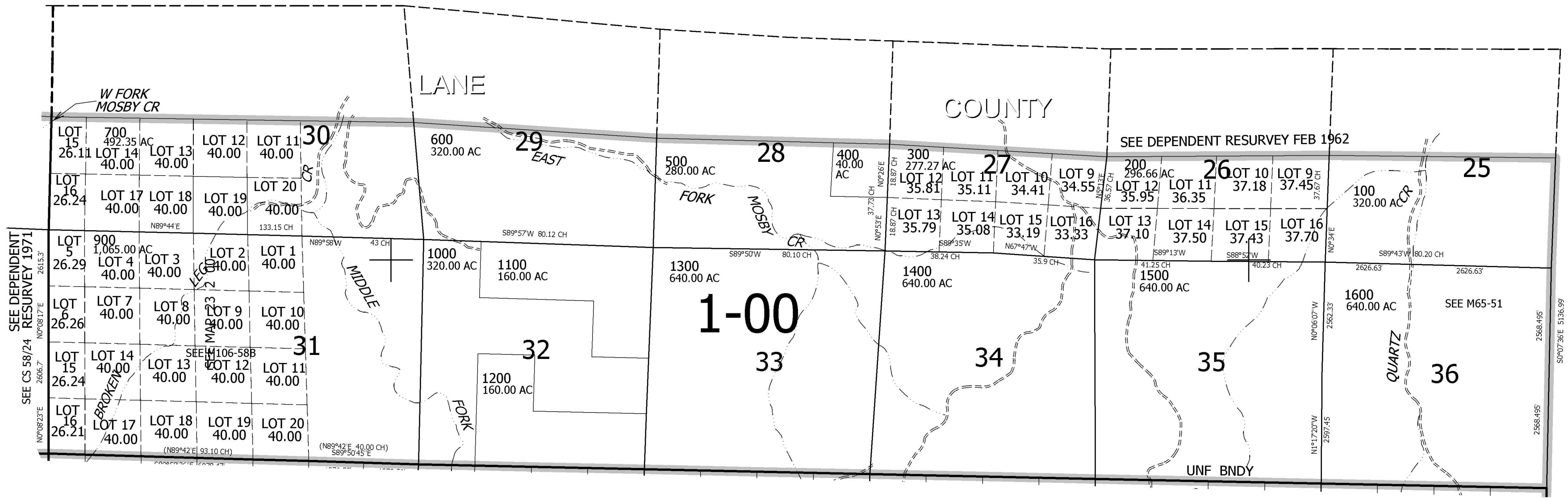
T.23S. R.1W. W.M.
DOUGLAS COUNTY
1" = 2000'

REVISED ON

23 1 00

710,000

CANCELLED NOS
500M1 700M1 1100M1
1200M1 1600M1



SEE DEPENDENT
RESURVEY 1971
2615.3'
N0°08'17"E

SEE CS 58/24
RESURVEY 1971
2606.7'
N0°08'23"E

SEE DEPENDENT RESURVEY FEB 1962

1-00

SEE MAP 24 1 00

4,320,000

23 1 00

LANE COUNTY