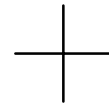
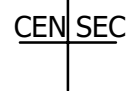


THIS MAP WAS PREPARED FOR ASSESSMENT PURPOSE ONLY.

SE1/4 SEC.36 T.22S. R.13W. W.M.
DOUGLAS COUNTY
1" = 200'

REVISED ON
12-14-21

22 13 36D



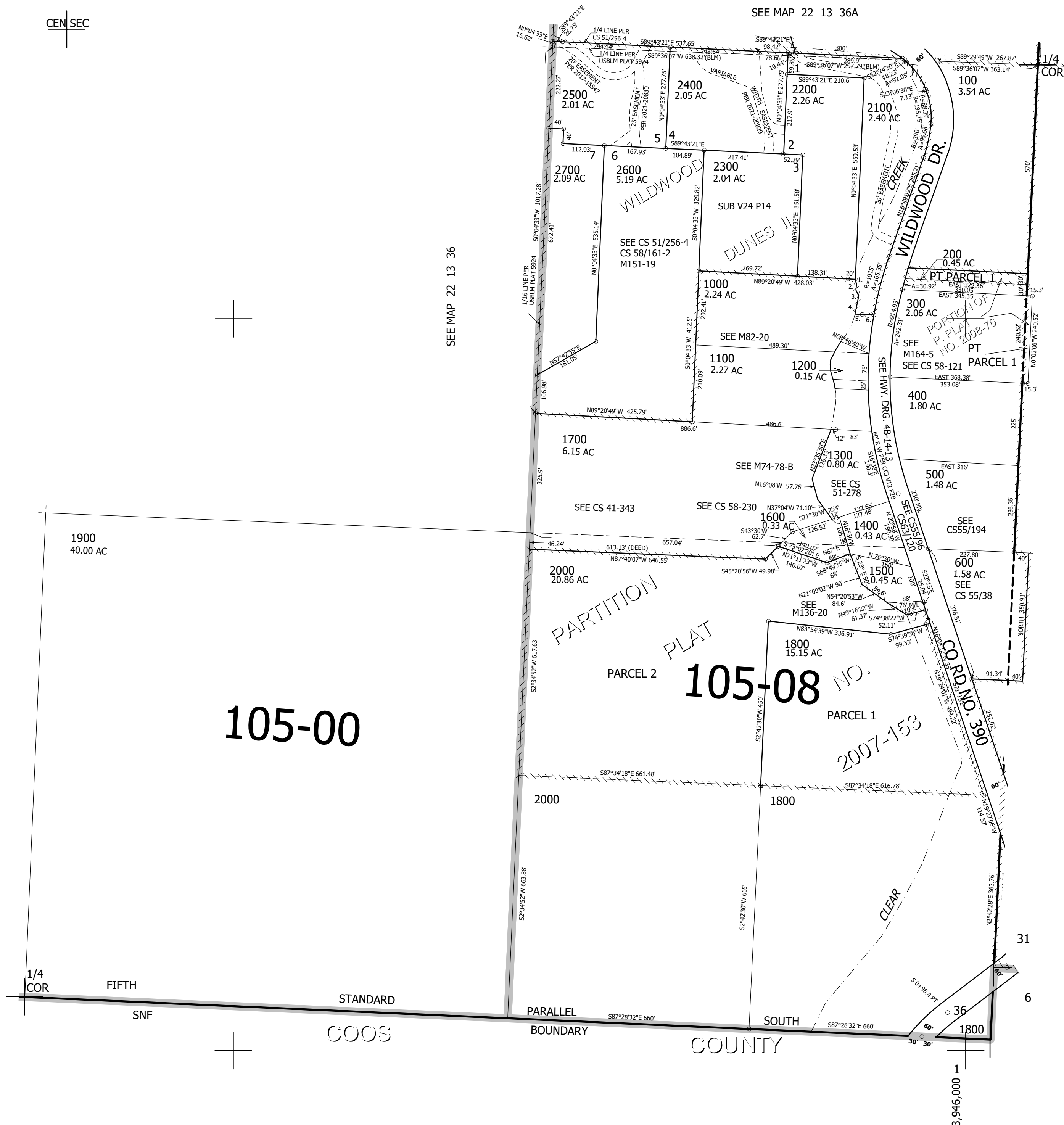
SEE MAP 22 13 36

SEE MAP 22 13 36

CANCELLED NOS
1001 1801 1802
2001 700 301
800 801 900
802 803 804

TAXLOT 2100
1. S15°06'05"E 14.6'
2. S3°05'30"W 14.44'
3. S26°46'48"E 18.12'
4. S9°17'03"W 50.8'
5. S89°46'51"E 19.89'
6. S89°46'51"E 31.47'

SEE MAP 22 12 31C



730,000

22 13 36D