

THIS MAP WAS PREPARED FOR ASSESSMENT PURPOSE ONLY.

NE1/4 SEC.36 T.22S. R.13W. W.M.  
DOUGLAS COUNTY

1" = 200'

REVISED ON  
11-18-19

22 13 36A

1/4 COR

SEE MAP 22 13 25

25 30

31

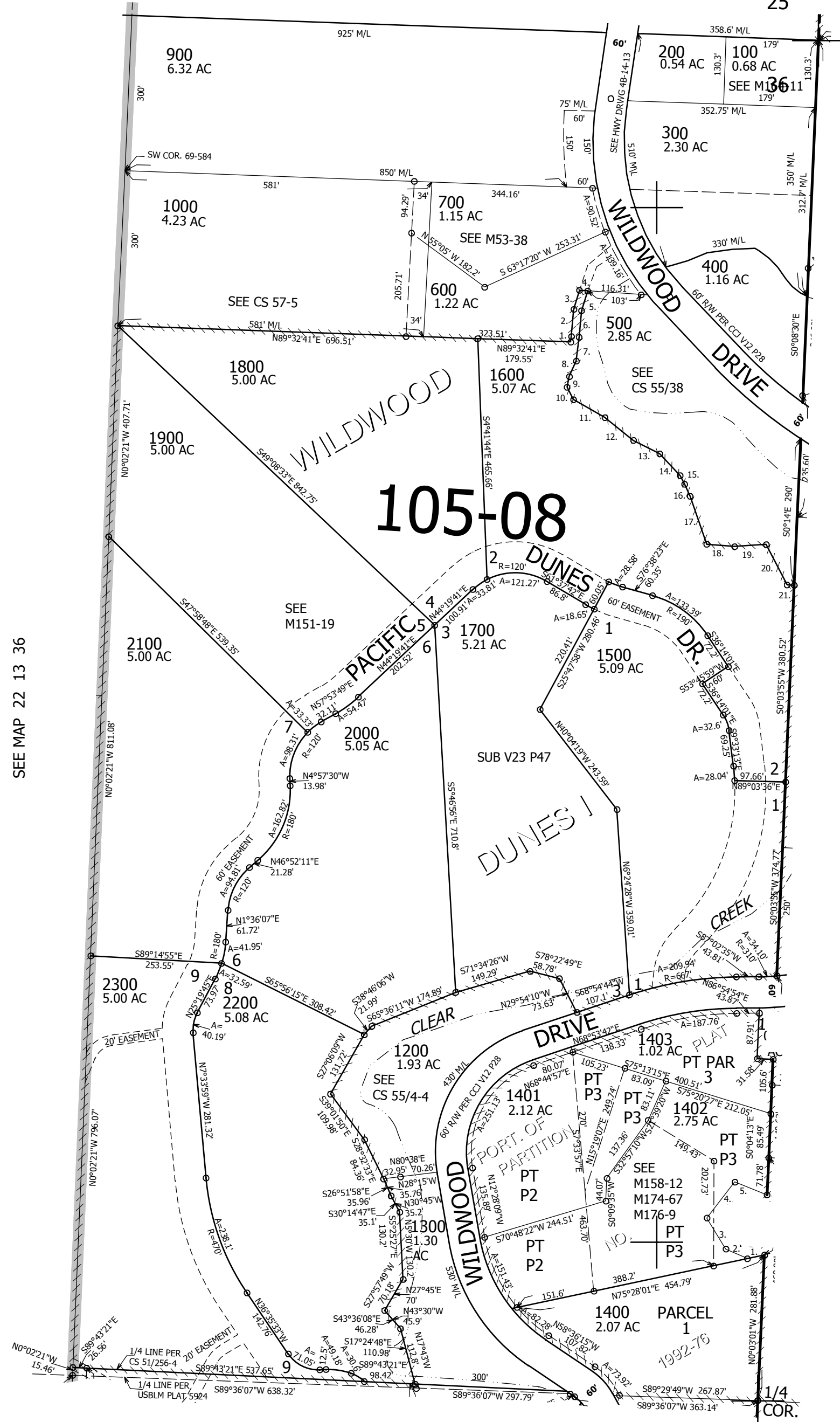
CANCELLED NOS  
800 601 701  
1404 1405 1406  
1100 1407

TAXLOT 1600

1. N4°42'02"E 10.95'
2. N2°44'53"E 52.43'
3. N14°01'33"E 38.23'
4. S88°41'45"E 16.24'
5. S14°58'49"W 40.24'
6. S2°39'37"W 51.16'
7. S4°31'08"W 46.48'
8. S21°38'59"W 32.72'
9. S9°04'22"W 20.97'
10. S29°31'39"E 27'
11. S62°47'15"E 69.6'
12. S53°47'03"E 70.92'
13. S65°33'00"E 57.13'
14. S45°32'26"E 57.95'
15. S30°46'20"E 18.59'
16. S26°14'34"E 25.73'
17. S21°39'11"E 97.93'
18. S87°49'38"E 53.8'
19. N83°41'48"E 61.56'
20. S29°50'41"E 88.02'
21. S89°06'04"E 13.18'

SEE MAP 22 13 36

SEE MAP 22 12 31B



PARCEL 1402

1. S75°28'01"W 33.58'
2. N68°37'45"W 45.57'
3. N34°09'07"W 70.19'
4. N35°06'28"E 88.15'
5. S70°52'12"E 67.35'

733,000

CEN SEC

SEE MAP 22 13 36D

3,945,000

22 13 36A