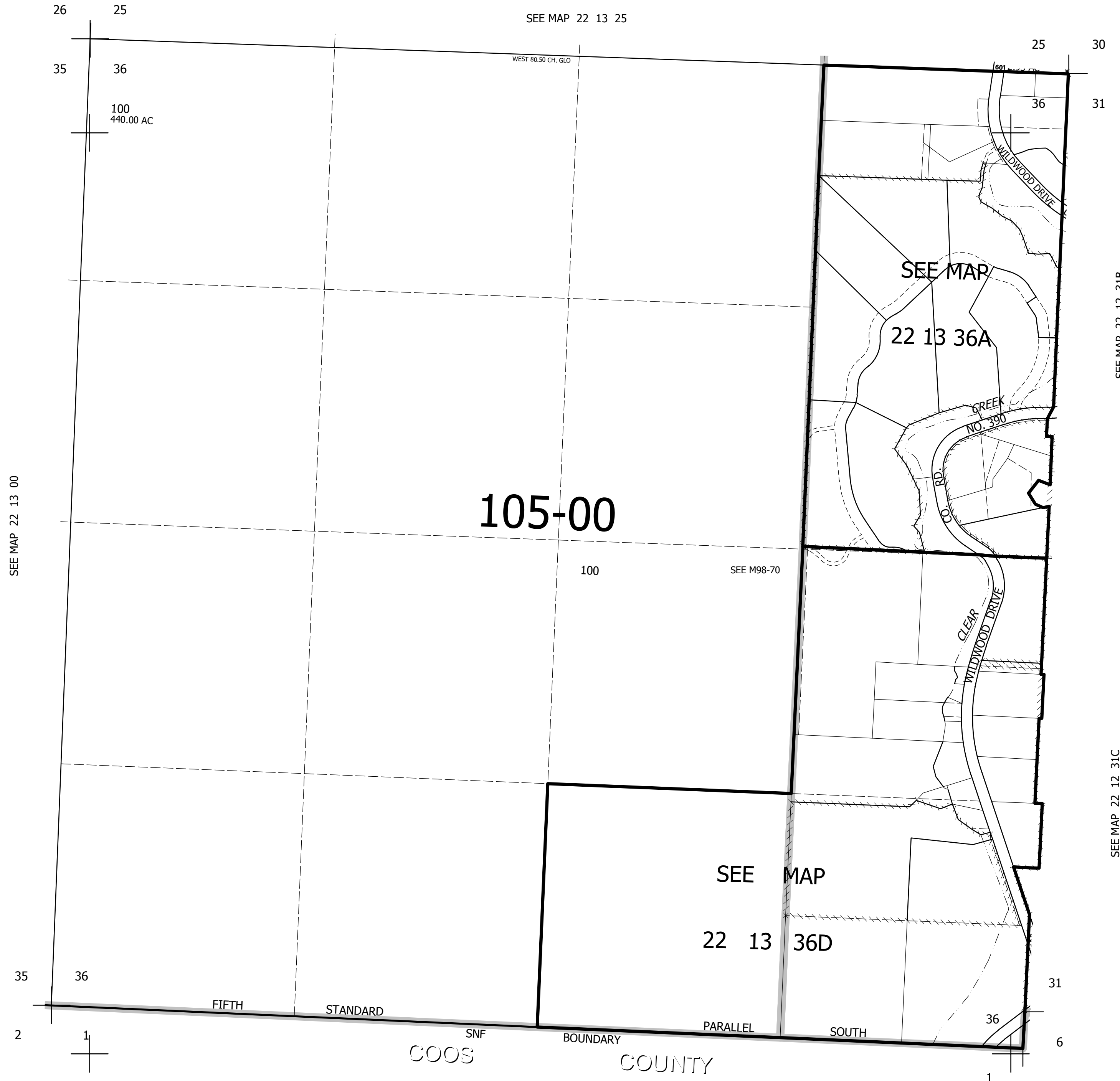


THIS MAP WAS PREPARED FOR ASSESSMENT PURPOSE ONLY.

SEC.36 T.22S. R.13W. W.M.  
DOUGLAS COUNTY  
1" = 400'

REVISED ON  
11-19-19

22 13 36  
& INDEX



CANCELLED NOS  
100M1

SEE MAP 22 12 31B

SEE MAP 22 12 31C

730,000

22 13 36  
& INDEX

3,946,000