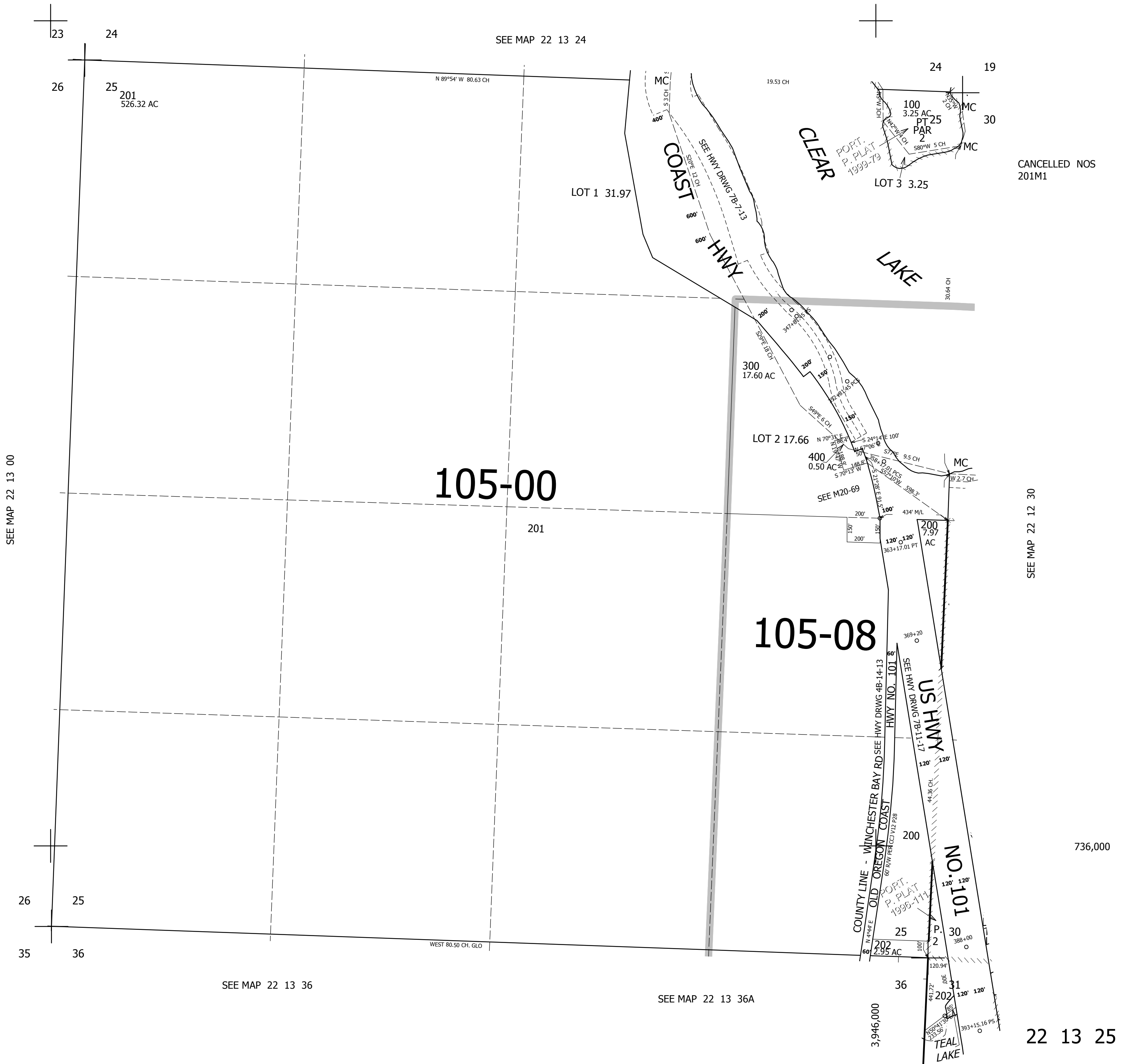


THIS MAP WAS PREPARED FOR ASSESSMENT PURPOSE ONLY.

SEC.25 T.22S. R.13W. W.M.  
DOUGLAS COUNTY  
1" = 400'

REVISED ON  
4-1-13

22 13 25



CANCELLED NOS  
201M1

SEE MAP 22 12 30

736,000

22 13 25