

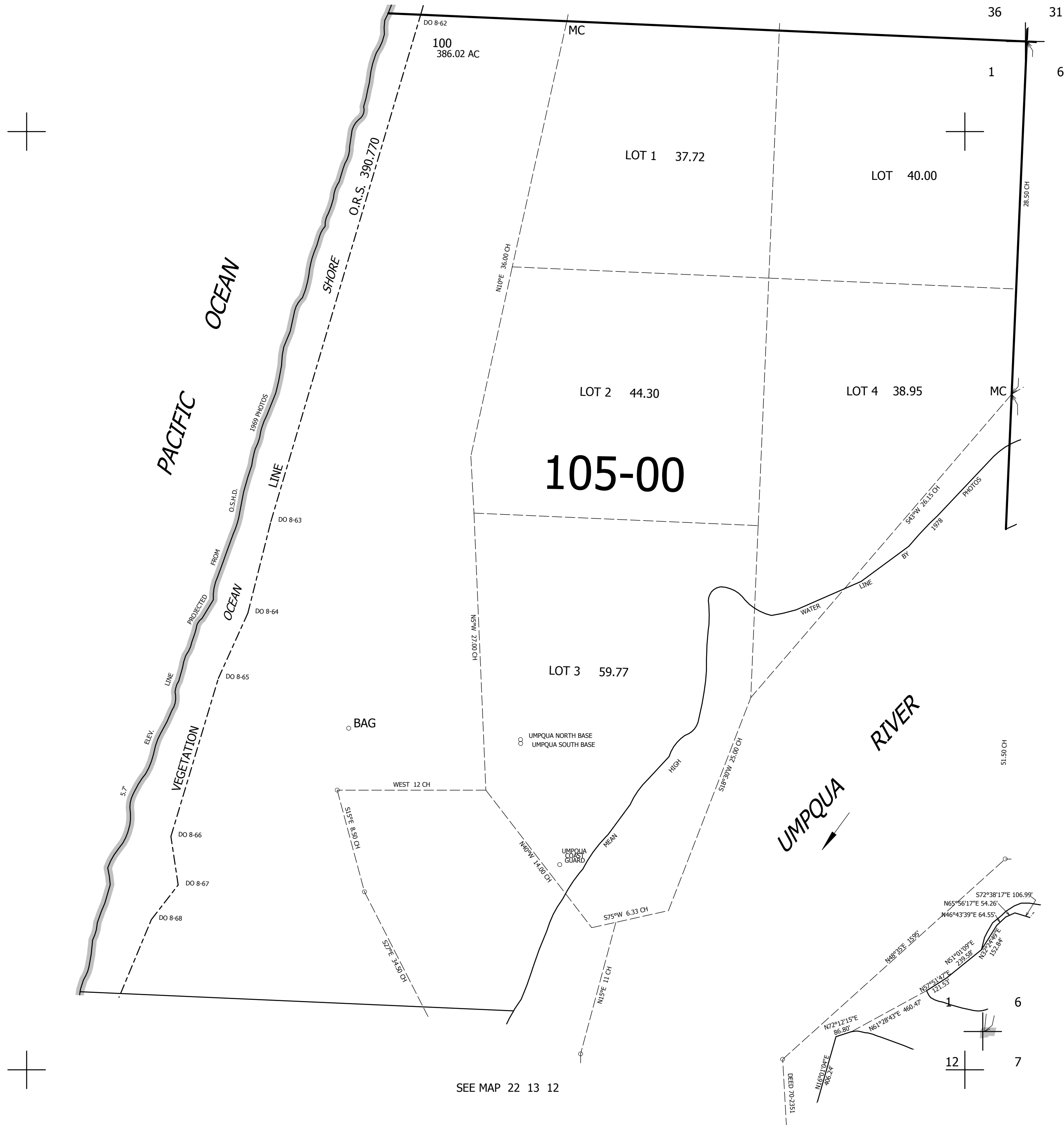
THIS MAP WAS PREPARED FOR ASSESSMENT PURPOSE ONLY.

SEC.1 T.22S. R.13W. W.M.
DOUGLAS COUNTY
1" = 400'

REVISED ON
12-31-14

22 13 1

SEE MAP 21 12 00



CANCELLED NOS

SEE MAP 22 12 6

SEE MAP 22 13 12

756,000

3,947,000

22 13 1