

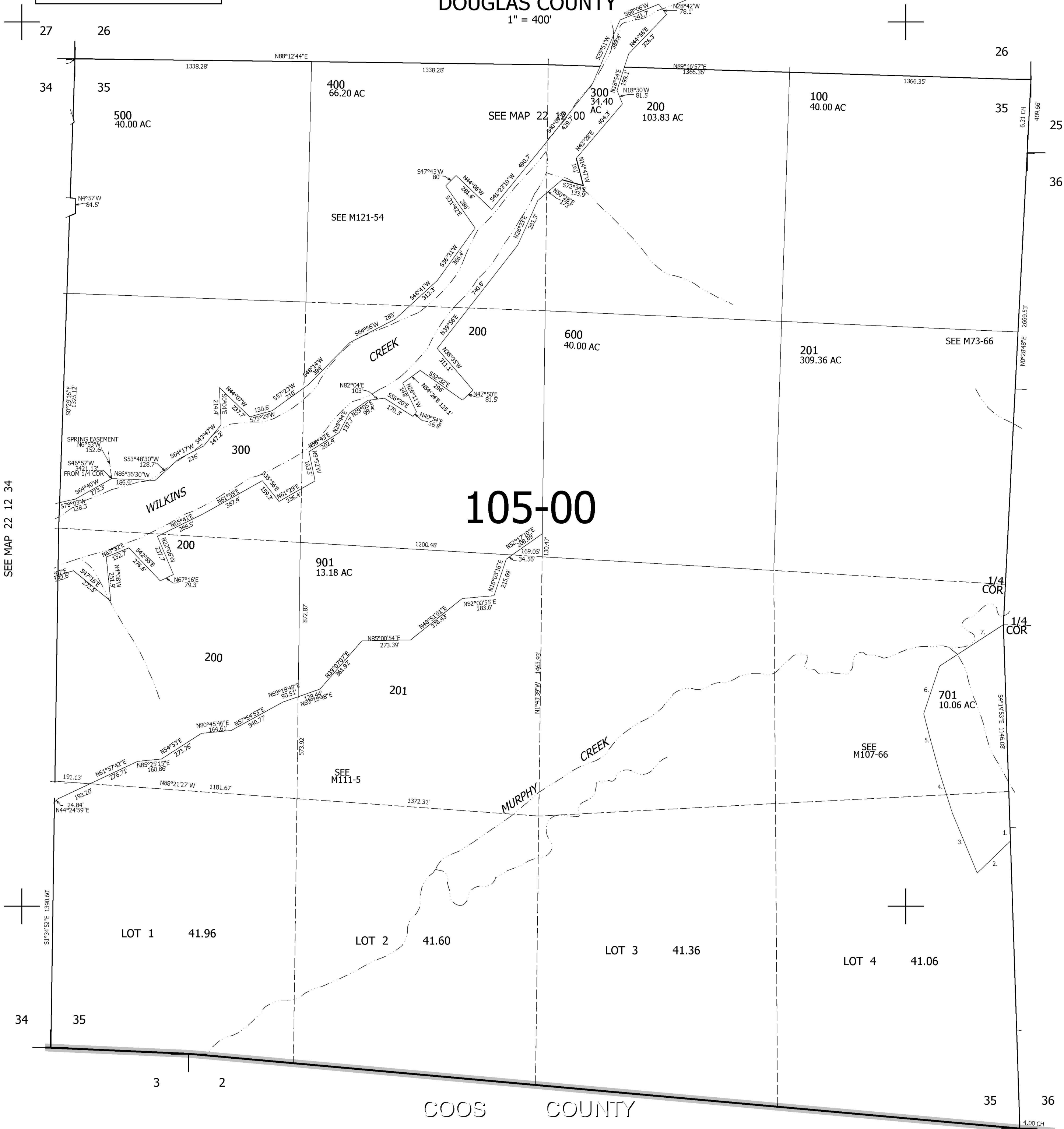
THIS MAP WAS PREPARED FOR ASSESSMENT PURPOSE ONLY.

SEC.35 T.22S. R.12W. W.M. DOUGLAS COUNTY

1" = 400'

REVISED ON
4-30-96

22 12 35



CANCELLED NOS
202 700 800
900 801 201M1
201M2 500M1

PARCEL 701

1. S4°19'53"E 80.49'
2. S43°04'05"W 256.94'
3. N24°33'21"W 368.04'
4. N19°41'23"W 254.56'
5. N16°32'39"W 327.93'
6. N14°19'E 274.44'
7. N53°14'36"E 429.26'

730,000

22 12 35