

THIS MAP WAS PREPARED FOR ASSESSMENT PURPOSE ONLY.

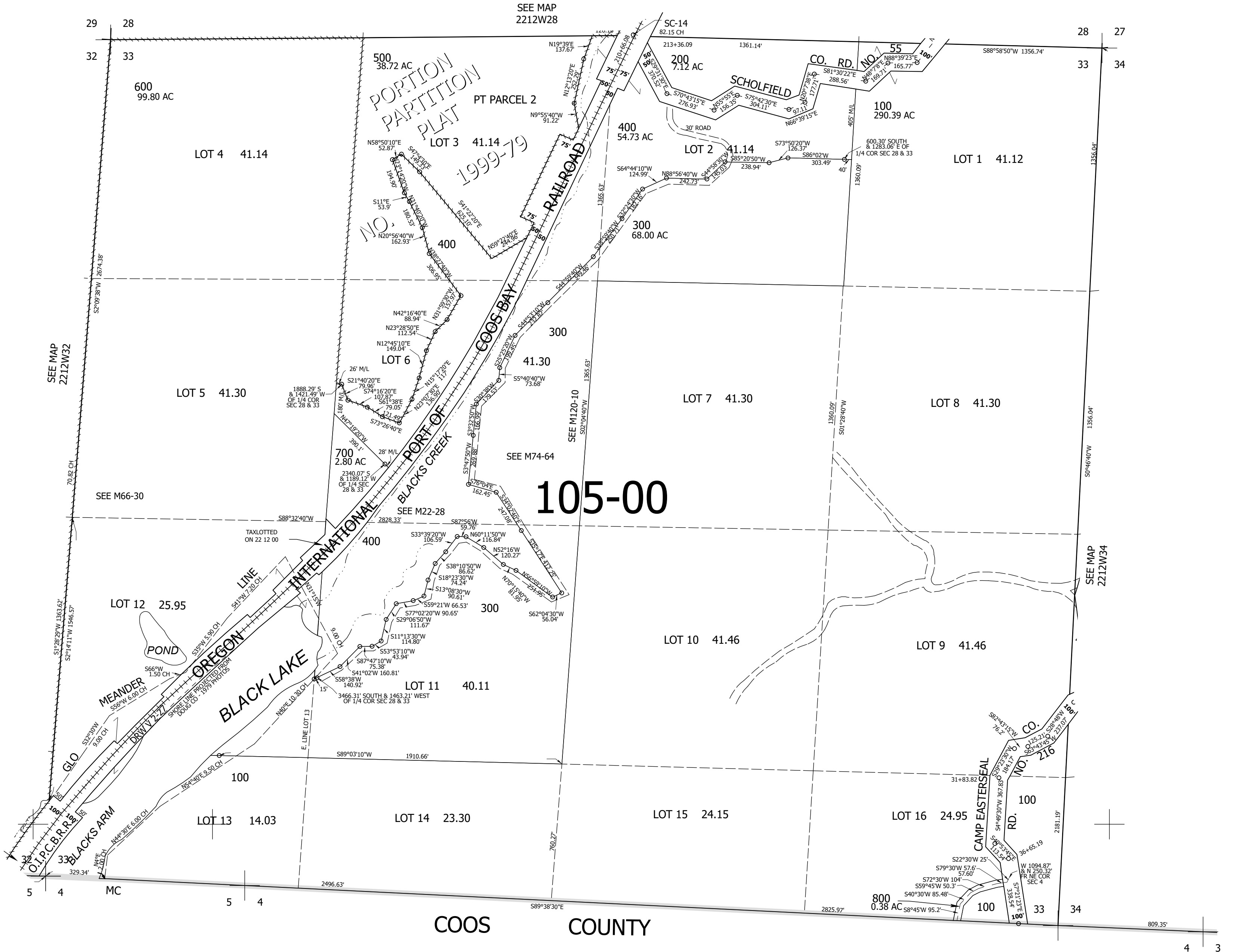
Upper Left:
124°8'58"W 43°37'36"N
3955289E 735393N ft

SEC.33 T.22S. R.12W. W.M.
DOUGLAS COUNTY
1" = 400'

Date Exported 2026-03-16

221233

CANCELLED NOS:
200M1 300M1 500M1
700M1



COOS COUNTY

4 3

221233

Lower Right:
124°7'8"W 43°36'31"N
3963139E 728438N ft