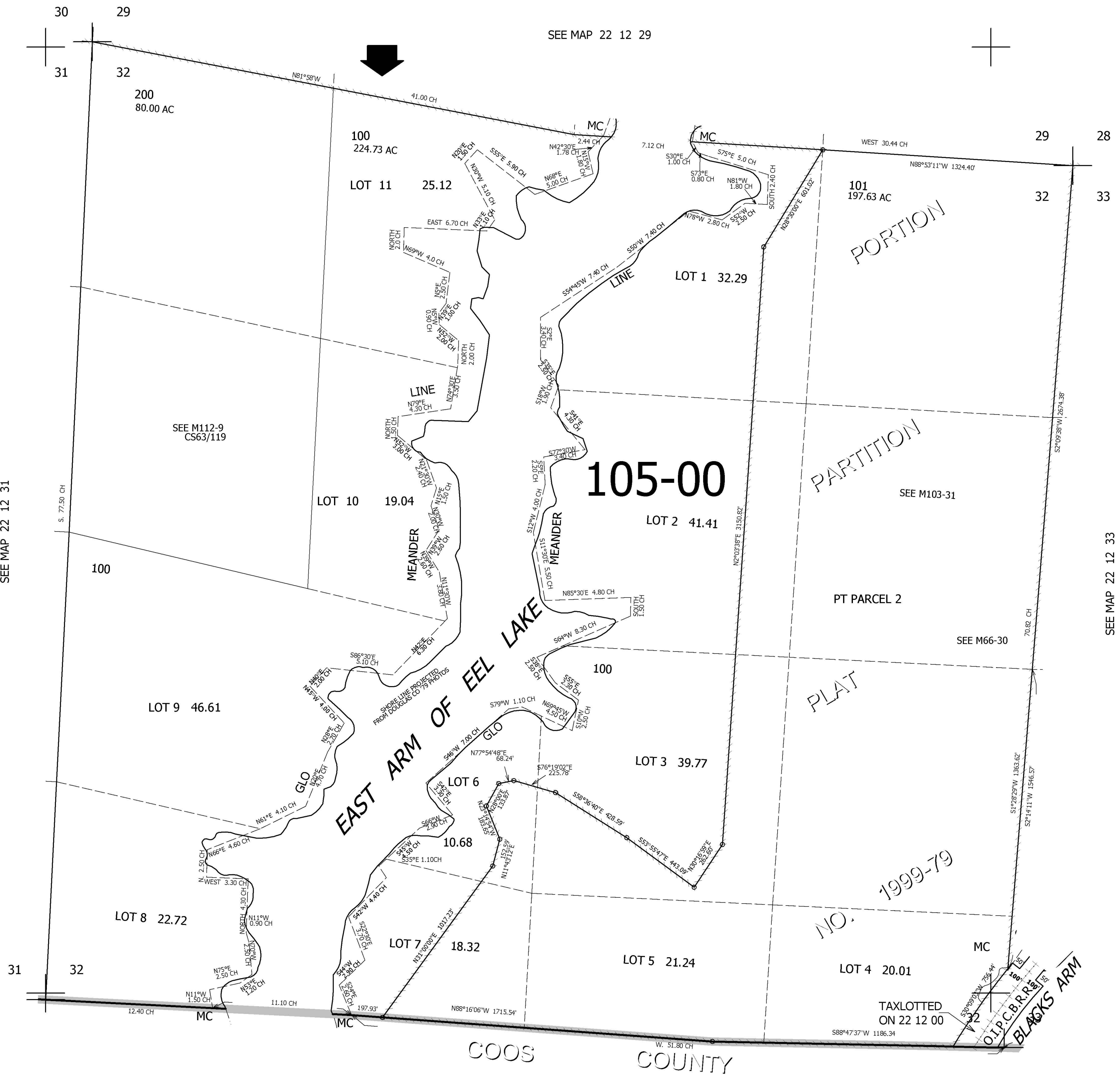


THIS MAP WAS PREPARED FOR ASSESSMENT PURPOSE ONLY.

SEC.32 T.22S. R.12W. W.M.
DOUGLAS COUNTY
1" = 400'

REVISED ON
7-20-10

22 12 32



CANCELLED NOS
102

SEE MAP 22 12 31

SEE MAP 22 12 33

730,000

TAXLOTTED
ON 22 12 00

O.I.P.C.B.R. Plat
BLACKS ARM

5 4

3,956,000

22 12 32