

THIS MAP WAS PREPARED FOR ASSESSMENT PURPOSE ONLY.

Upper Left:
124°11'21"W 43°37'9"N
3944674E 733137N ft

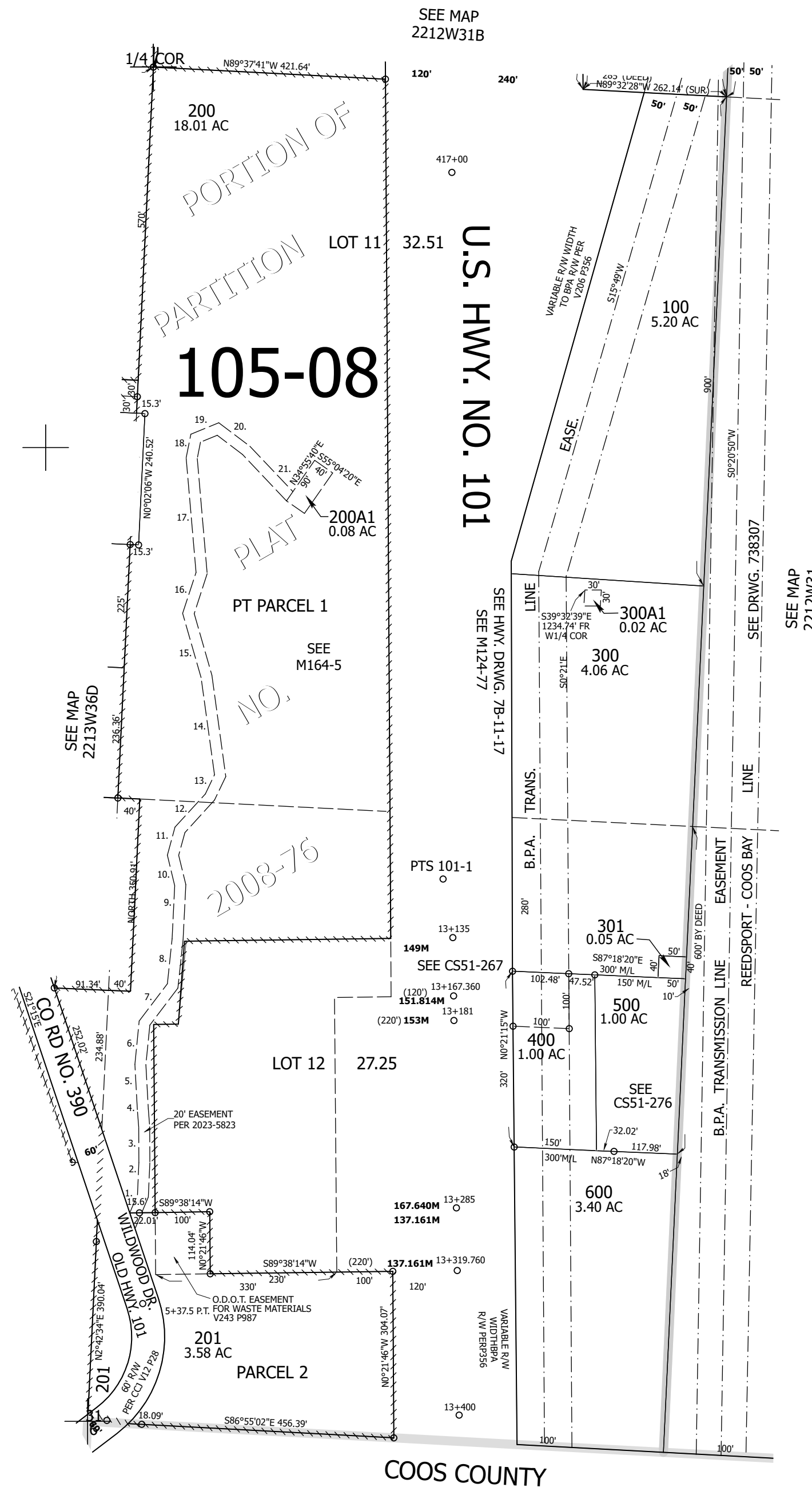
SW1/4 SEC.31 T.22S. R.12W. W.M.
DOUGLAS COUNTY
1" = 200'

Date Exported 2023-06-19

221231C

CANCELLED NOS:
202

- PARCEL 200A1
P.O.B N2°49'42"E 393.61' &
S83°04'42"E 67.05' FR SW
COR SEC 31
1. N22°35'12"E 36.28'
 2. N2°22'44"E 58.34'
 3. N0°09'50"W 64.39'
 4. N4°40'01"W 32.04'
 5. N3°10'09"W 82.64'
 6. N5°36'17"E 79.39'
 7. N37°07'02"E 84.89'
 8. N6°02'41"E 82.41'
 9. N2°41'13"E 96.82'
 10. N13°43'17"W 57.16'
 11. N15°16'11"E 53.11'
 12. N42°23'01"E 81.79'
 13. N25°29'14"E 38.58'
 14. N7°53'09"W 178.77'
 15. N16°07'09"W 121.51'
 16. N18°04'15"E 78.46'
 17. N5°02'35"W 209.33'
 18. N11°19'57"E 43.91'
 19. N67°33'21"E 54.91'
 20. S52°58'40"E 70.92'
 21. S43°32'15"E 113.82'



CEN SEC

1/4 COR

221231C

Lower Right:
124°10'26"W 43°36'37"N
3948598E 729660N ft