

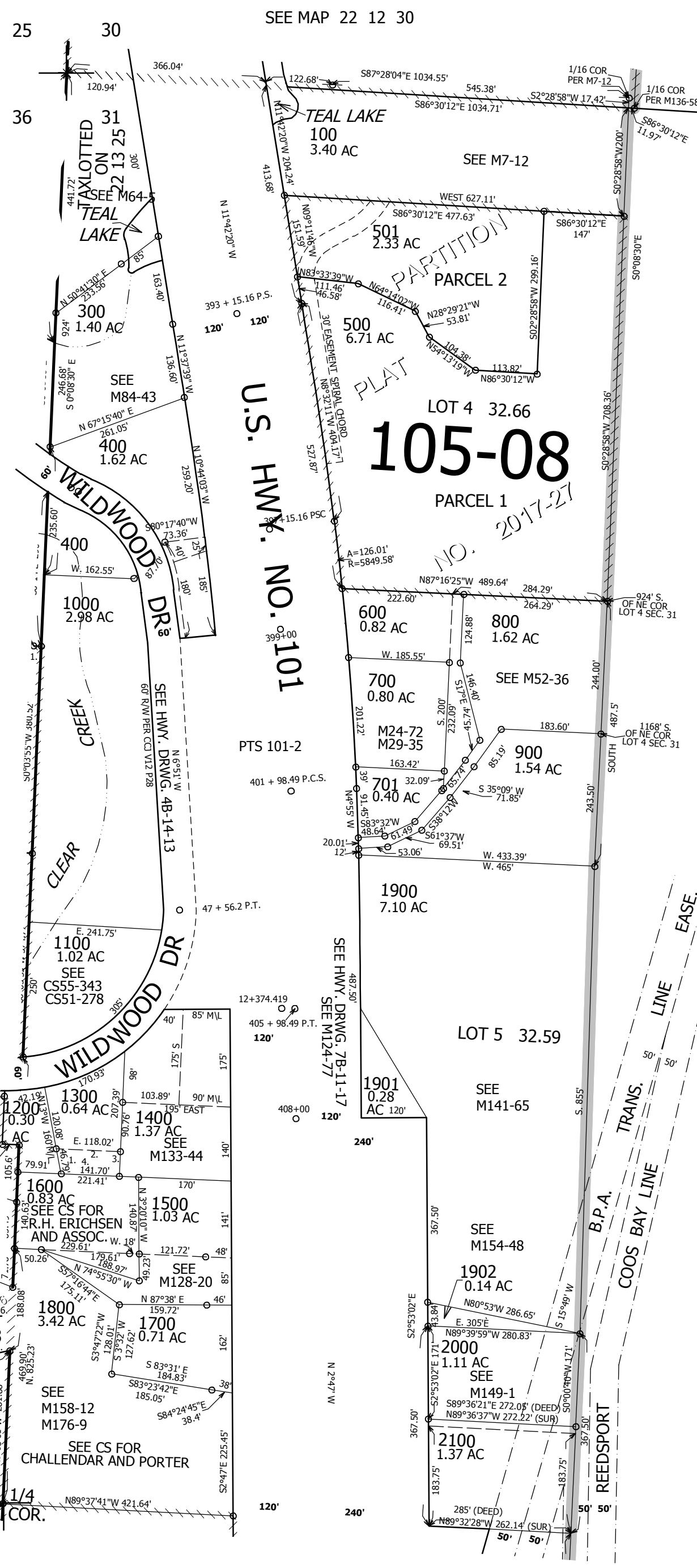
THIS MAP WAS PREPARED FOR ASSESSMENT PURPOSE ONLY.

# NW1/4 SEC.31 T.22S. R.12W. W.M. DOUGLAS COUNTY

22 12 31B

REVISED ON 11-18-19

1" = 200'



SEE MAP 22 12 30

SEE MAP 22 13 36A

SEE MAP 22 12 31

SEE MAP 22 12 31C

1/4 COR

CANCELLED NOS 200 1401 2001

- PARCEL 1300
1. N13°07'07"W 46.44'
  2. N89°54'46"E 118.06'
  3. S0°03'58"E 45.34'
  4. S89°57'52"W 107.57'

- PARCEL 1800
1. S75°28'01"W 33.58'
  2. N68°37'45"W 45.57'
  3. N34°09'07"W 70.19'
  4. N35°06'28"E 88.15'
  5. S70°52'12"E 67.35'
  6. S00°00'34"E 116.31'

3,948,000

CEN

733,000

22 12 31B