

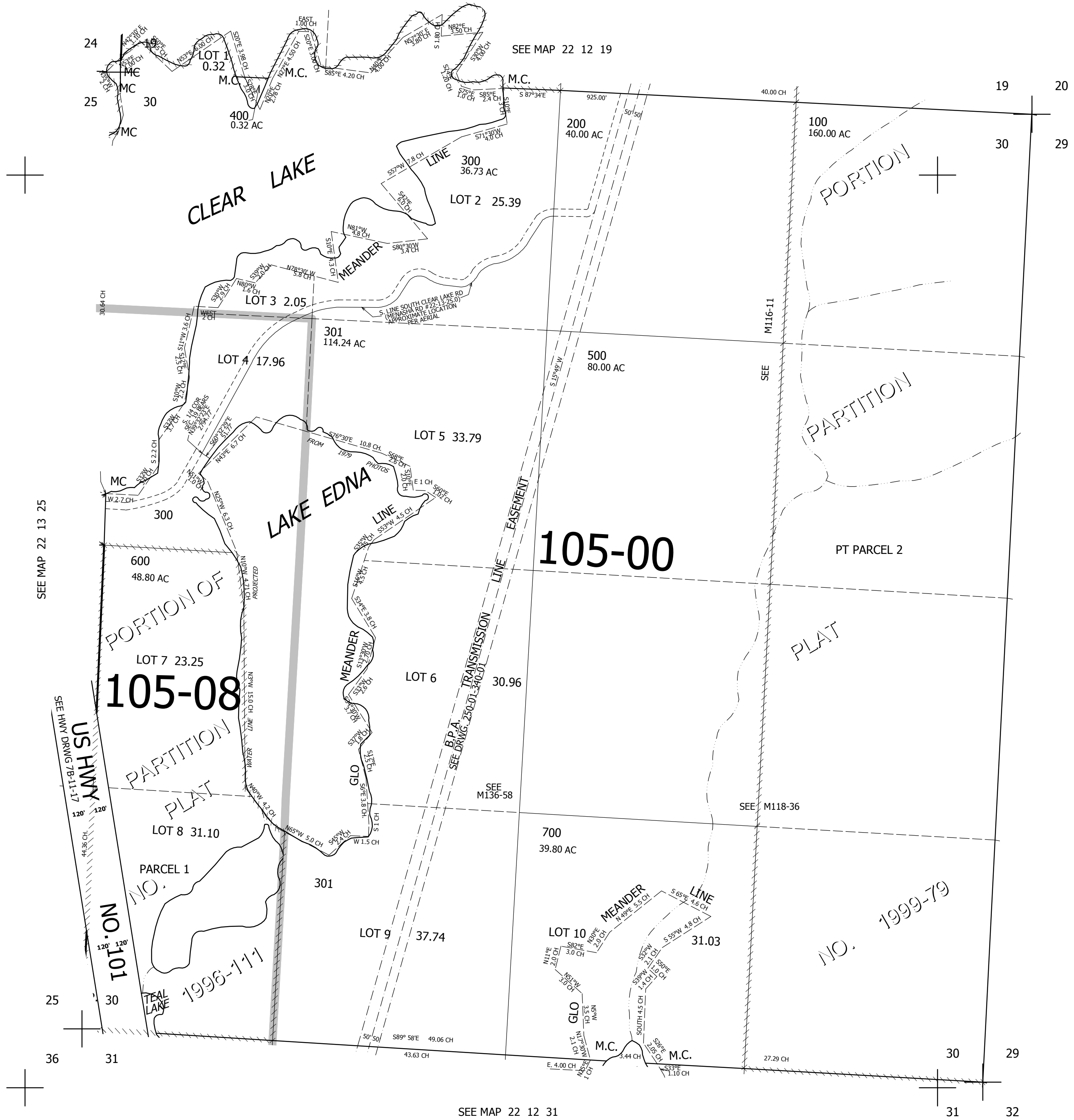
THIS MAP WAS PREPARED FOR ASSESSMENT PURPOSE ONLY.

SEC.30 T.22S. R.12W. W.M.
DOUGLAS COUNTY

REVISED ON
4-1-13

22 12 30

1" = 400'



CANCELLED NOS
601 800 200M1
400M1

SEE MAP 22 12 29

735,000

22 12 30

SEE MAP 22 12 31

3,951,000