

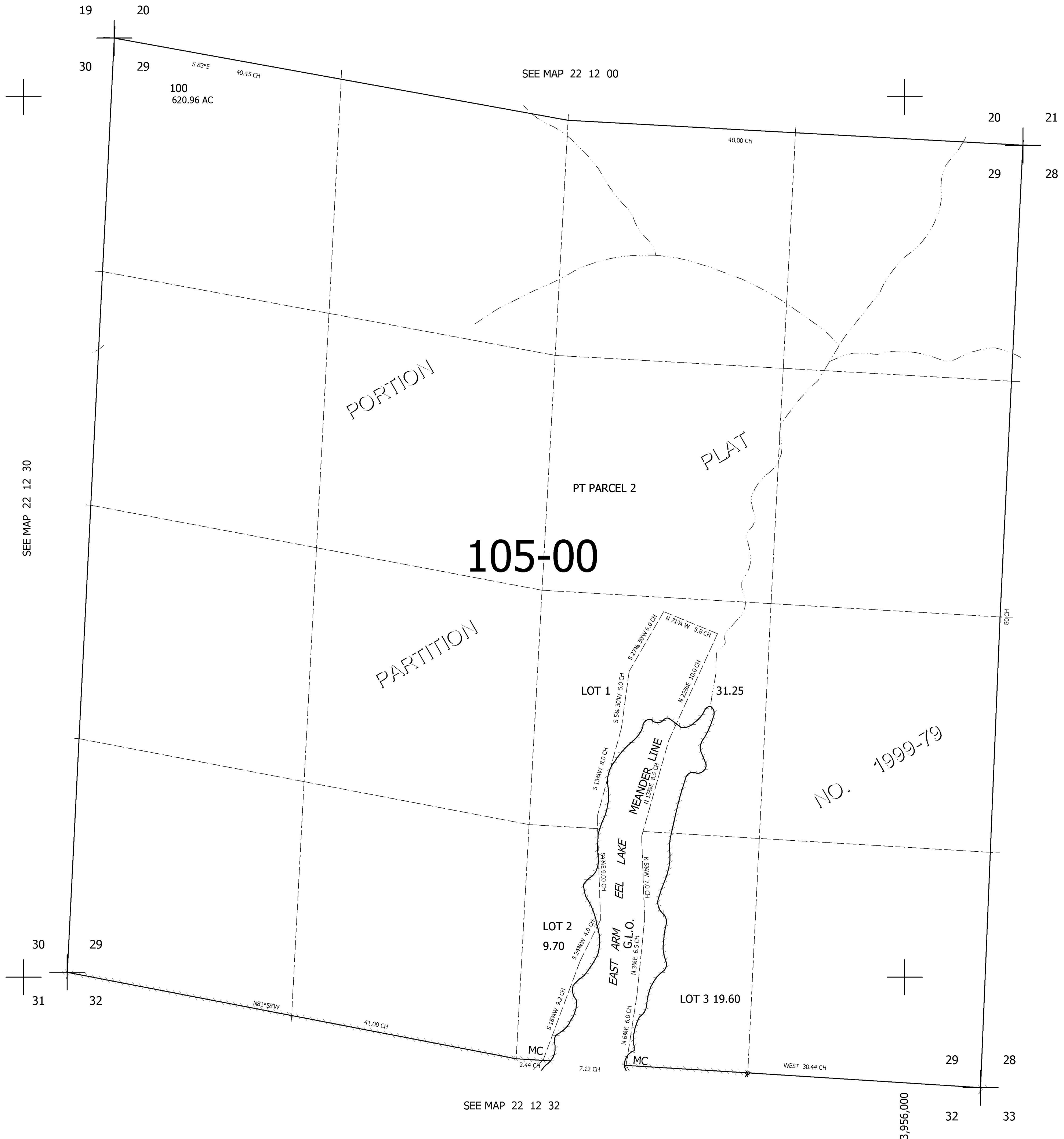
THIS MAP WAS PREPARED FOR ASSESSMENT PURPOSE ONLY.

SEC.29 T.22S. R.12W. W.M.
DOUGLAS COUNTY

REVISED ON
10-12-99

22 12 29

1" = 400'



CANCELLED NOS
200 300

SEE MAP 22 12 28

735,000

SEE MAP 22 12 32

3,956,000

22 12 29