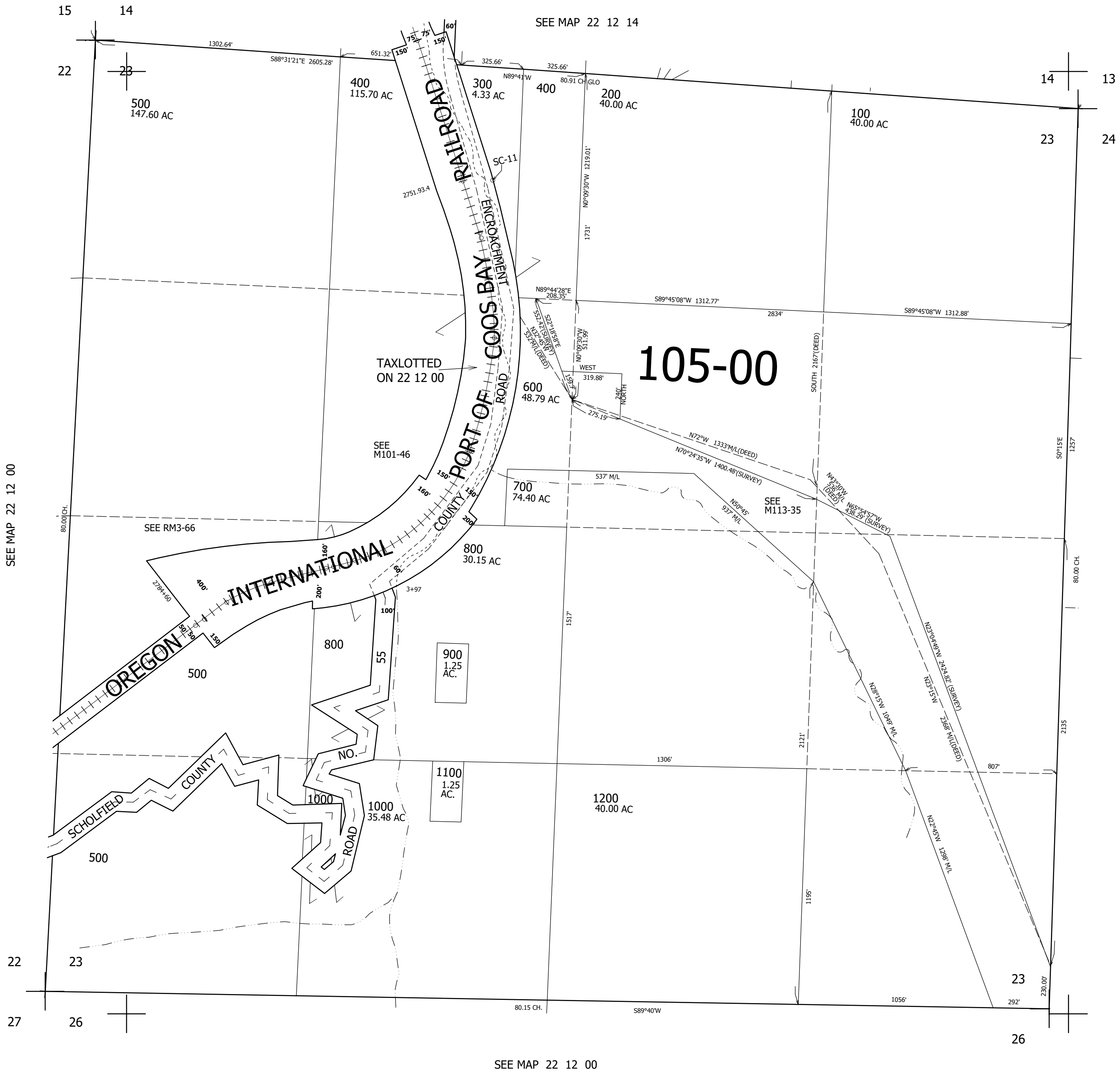


THIS MAP WAS PREPARED FOR ASSESSMENT PURPOSE ONLY.

SEC.23 T.22S. R.12W. W.M.
DOUGLAS COUNTY
1" = 400'

REVISED ON
7-20-10

22 12 23



CANCELLED NOS
100M1 200M1 500M1
1200M1 401

SEE MAP 22 12 00

SEE MAP 22 12 00

SEE MAP 22 12 00

740,000

3,973,000
25

22 12 23