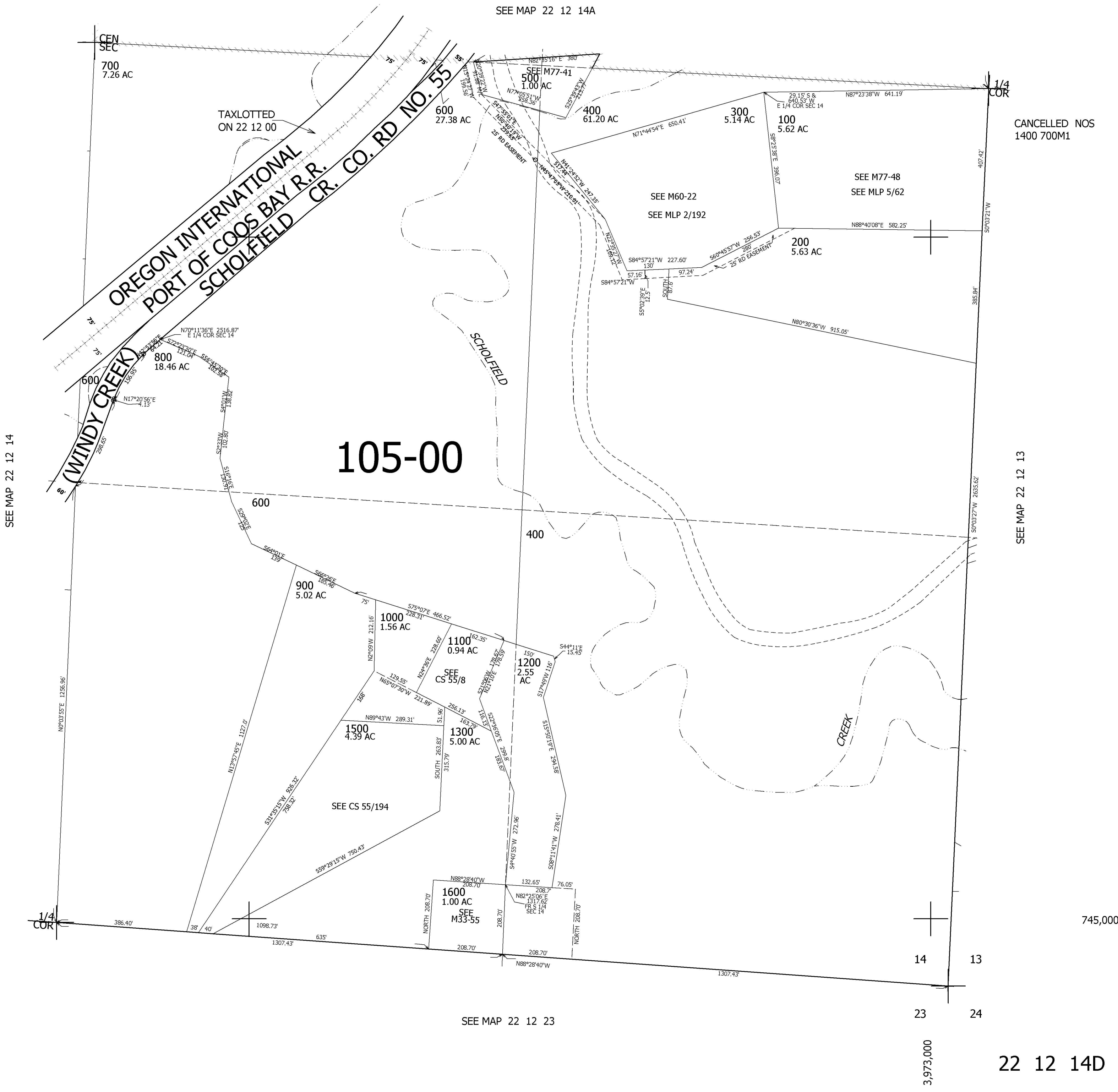


THIS MAP WAS PREPARED FOR ASSESSMENT PURPOSE ONLY.

SE1/4 SEC.14 T.22S. R.12W. W.M.
DOUGLAS COUNTY
1" = 200'

REVISED ON
7-20-10

22 12 14D



745,000

14 13
23 24

3,973,000

22 12 14D