

NE1/4 SEC.14 T.22S. R.12W. W.M.
DOUGLAS COUNTY

REVISED ON
4-4-18

22 12 14A

1" = 200'

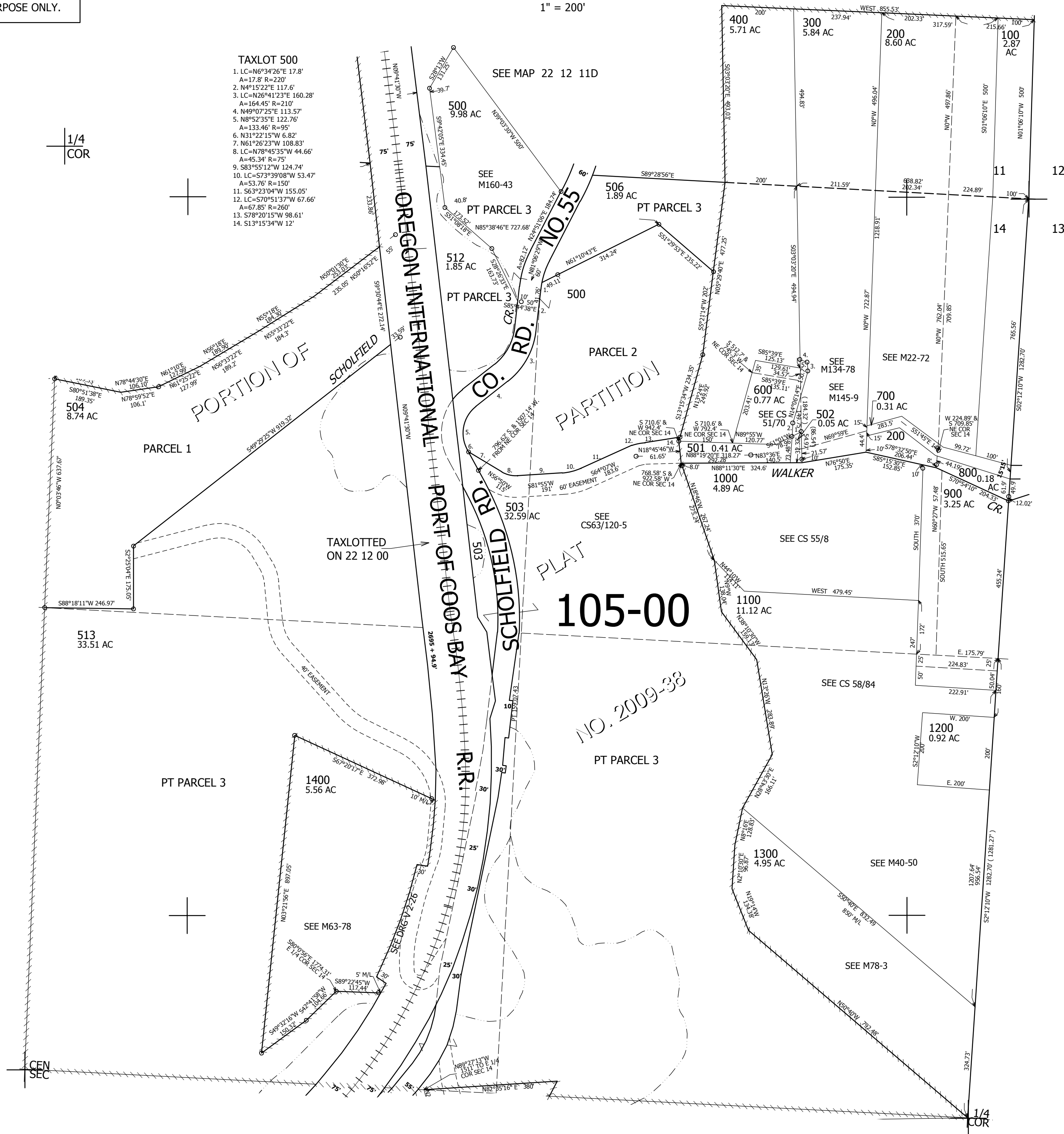
THIS MAP WAS PREPARED FOR
ASSESSMENT PURPOSE ONLY.

TAXLOT 500

1. LC=N6°34'26"E 17.8'
A=17.8' R=220'
2. N4°15'22"E 117.6'
A=117.6' R=220'
3. LC=N26°41'23"E 160.28'
A=164.45' R=210'
4. N49°07'25"E 113.57'
A=113.46' R=95'
5. N8°52'35"E 122.76'
A=122.76' R=95'
6. N31°22'15"W 6.82'
A=6.82' R=75'
7. N61°26'23"W 108.83'
A=108.83' R=75'
8. LC=N78°45'35"W 44.66'
A=45.34' R=75'
9. S83°55'12"W 124.74'
A=124.74' R=75'
10. LC=S73°39'08"W 53.47'
A=53.76' R=150'
11. S63°23'04"W 155.05'
A=155.05' R=150'
12. LC=S70°51'37"W 67.66'
A=67.85' R=260'
13. S78°20'15"W 98.61'
A=98.61' R=260'
14. S13°15'34"W 12'

1/4
COR

SEE MAP 22 12 14



CANCELLED NOS
301 601 1500M1
505 507 508
509 510 511

PARCEL 300 & 600
1. S61°01'W 29.07'
2. N1°30'53"E 37.22'
3. N6°30'36"W 24.6'
4. N71°23'W 21.31'
5. S3°03'20"E 23.48'

SEE MAP 22 12 13

748,000

SEE MAP 22 12 14D

3,973,000

22 12 14A