

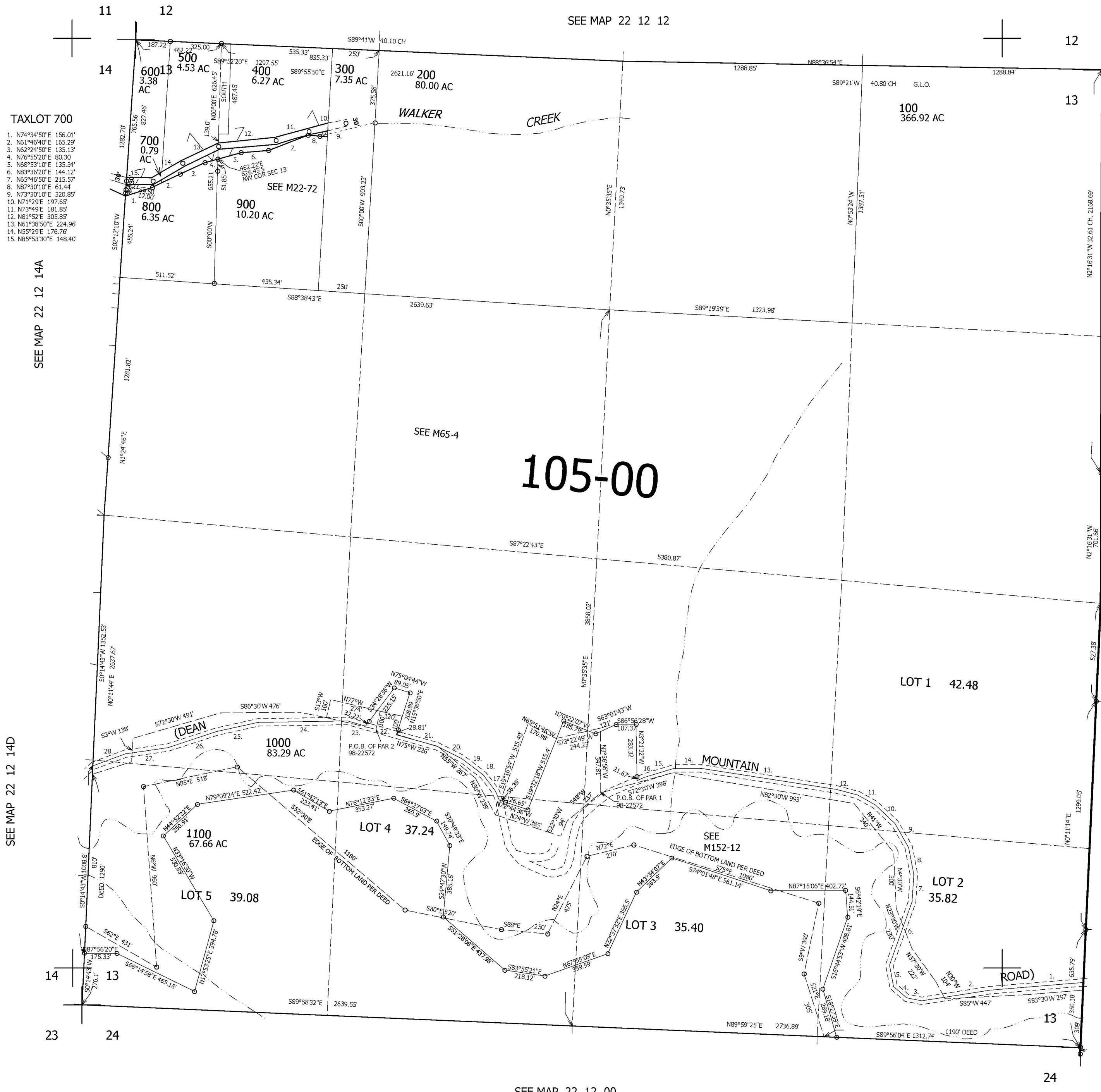
THIS MAP WAS PREPARED FOR ASSESSMENT PURPOSE ONLY.

SEC.13 T.22S. R.12W. W.M. DOUGLAS COUNTY

1" = 400'

REVISED ON 2-6-07

22 12 13



TAXLOT 700

1. N74°24'50"E 155.01'
2. N61°46'40"E 165.29'
3. N62°24'50"E 135.13'
4. N76°55'20"E 80.30'
5. N68°53'10"E 135.34'
6. N83°36'20"E 144.12'
7. N63°46'50"E 215.57'
8. N87°30'10"E 61.44'
9. N73°30'10"E 320.85'
10. N71°29'E 197.65'
11. N73°49'E 181.85'
12. N81°52'E 305.85'
13. N61°38'50"E 224.96'
14. N55°29'E 176.76'
15. N85°53'30"E 148.40'

SEE MAP 22 12 14A

SEE MAP 22 12 14D

SEE MAP 22 12 12

105-00

SEE MAP 22 12 00

CANCELLED NOS  
200M1 101 102  
103 1001 1002  
1101

SEE MAP 22 11 7

SEE MAP 22 11 18

C/L DEAN MNT. RD.  
P.O.B. BEARS N0°14'52"E 350.18'  
FROM SE COR SECTION 13

1. S82°53'57"W 503.44'
2. S78°45'52"W 372.33'
3. N81°23'11"W 82.06'
4. N51°05'29"W 93.61'
5. N13°10'59"W 117.25'
6. N17°13'55"E 361.62'
7. N1°19'24"E 146.67'
8. N13°03'19"W 147.42'
9. N32°18'08"W 148.97'
10. N48°38'24"W 144.89'
11. N63°18'45"W 108.9'
12. N77°57'42"W 121.52'
13. N83°33'52"W 729.88'
14. S87°59'15"W 147.54'
15. S70°39'20"W 169.74'
16. S63°59'11"W 42.28'
17. N24°33'45"W 52.45'
18. N39°51'49"W 107.66'
19. N54°58'01"W 146.18'
20. N66°06'11"W 151.42'
21. N76°41'21"W 224.11'
22. N76°41'21"W 172.39'
23. N76°41'21"W 101.18'
24. S86°46'29"W 480.68'
25. S75°01'08"W 229.88'
26. S69°19'10"W 27.5'
27. S79°18'33"W 231.91'
28. S67°18'49"W 184.87'

745,000

3,978,000

22 12 13