

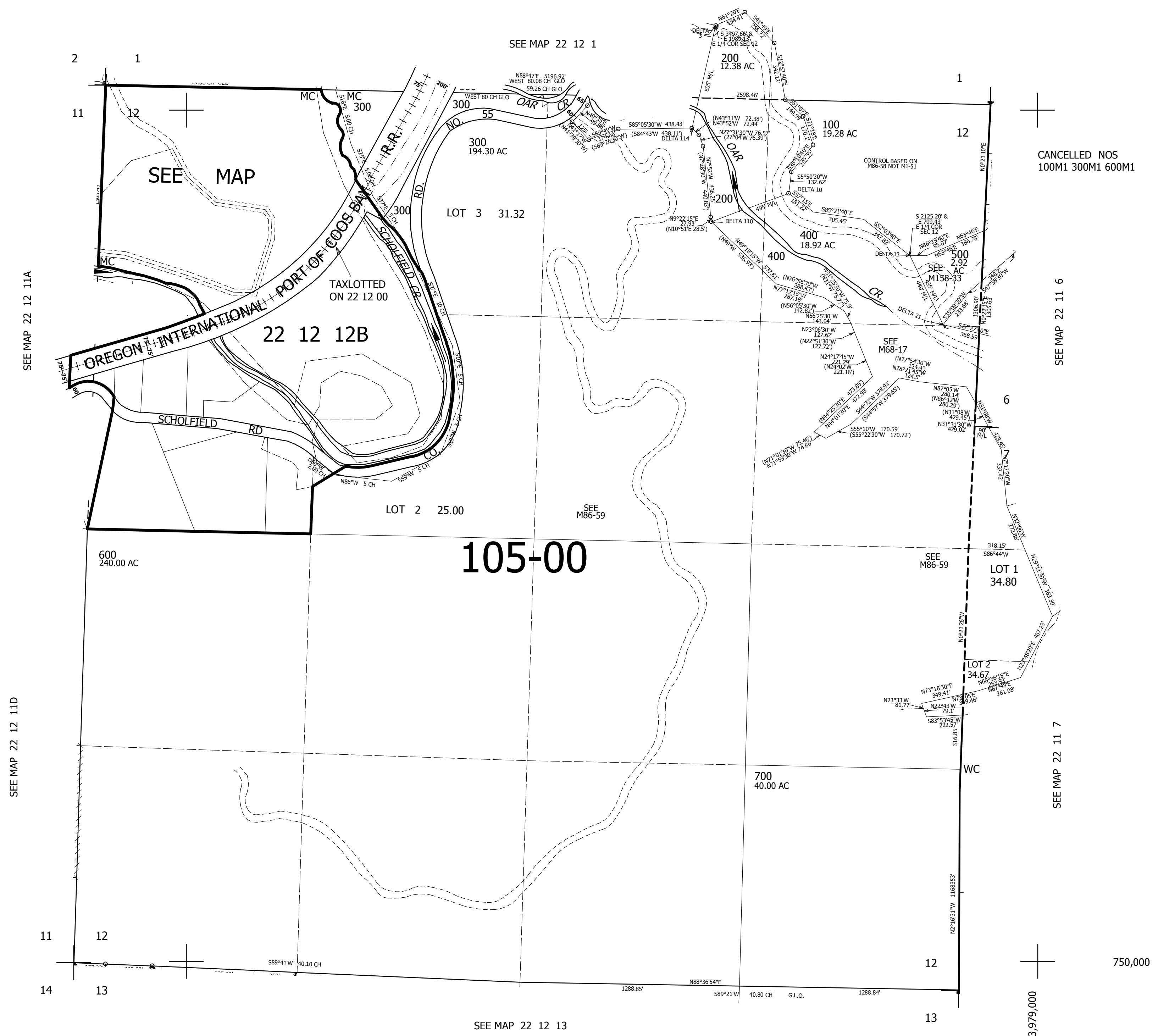
THIS MAP WAS PREPARED FOR ASSESSMENT PURPOSE ONLY.

SEC.12 T.22S. R.12W. W.M.  
DOUGLAS COUNTY

1" = 400'

REVISED ON  
1-9-18

22 12 12  
& INDEX



750,000  
3,979,000

22 12 12  
& INDEX