

THIS MAP WAS PREPARED FOR ASSESSMENT PURPOSE ONLY.

NE1/4 SEC.11 T.22S. R.12W. W.M.
DOUGLAS COUNTY
1" = 200'

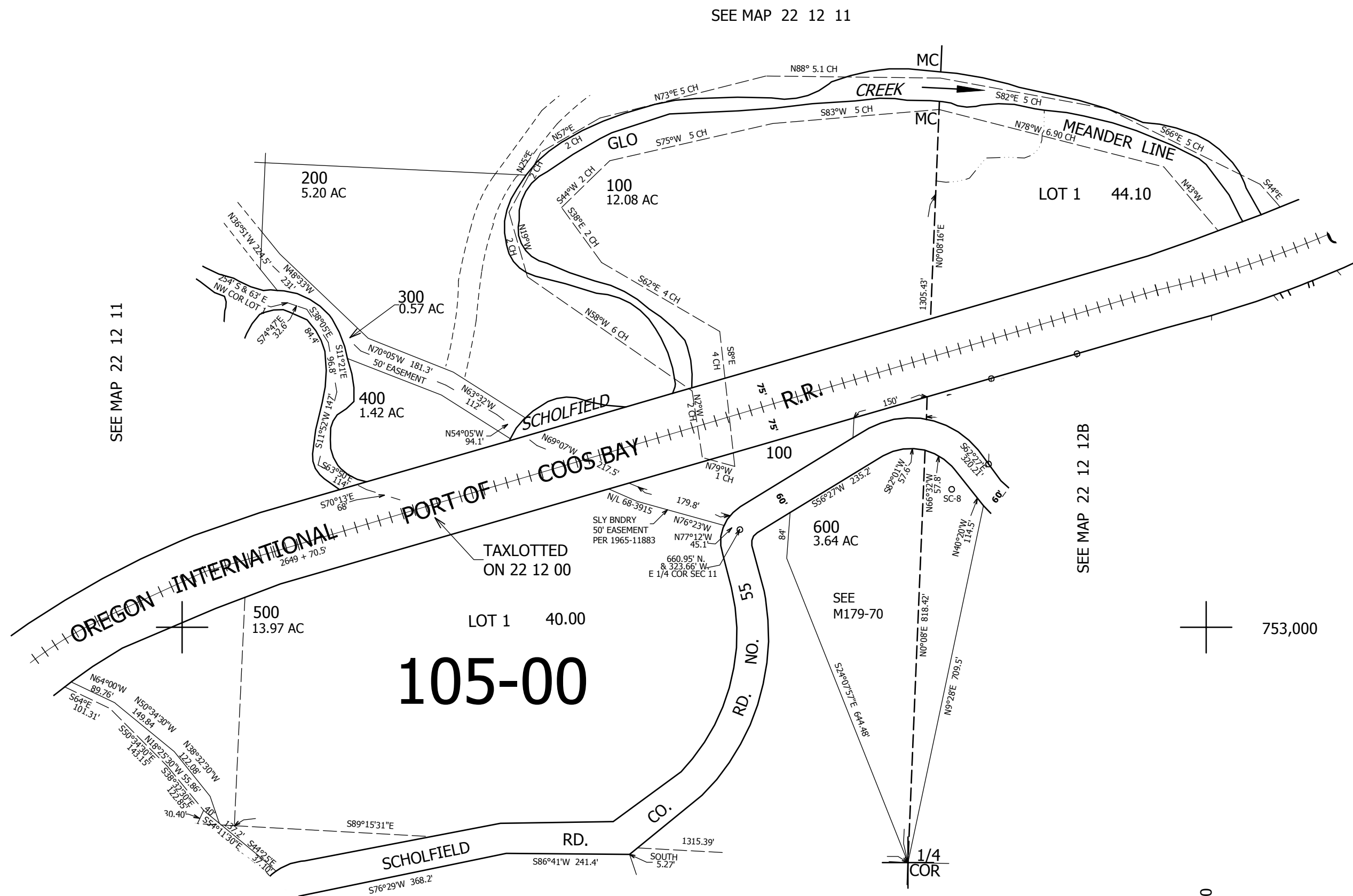
REVISED ON
4-2-18

22 12 11A

1/4 COR

CANCELLED NOS

2 1
11 12



SEE MAP 22 12 11

SEE MAP 22 12 11

SEE MAP 22 12 12B

753,000

105-00

LOT 1 40.00

200 5.20 AC

100 12.08 AC

300 0.57 AC

400 1.42 AC

500 13.97 AC

600 3.64 AC

SEE M179-70

SEE MAP 22 12 11D

3,974,000

22 12 11A