

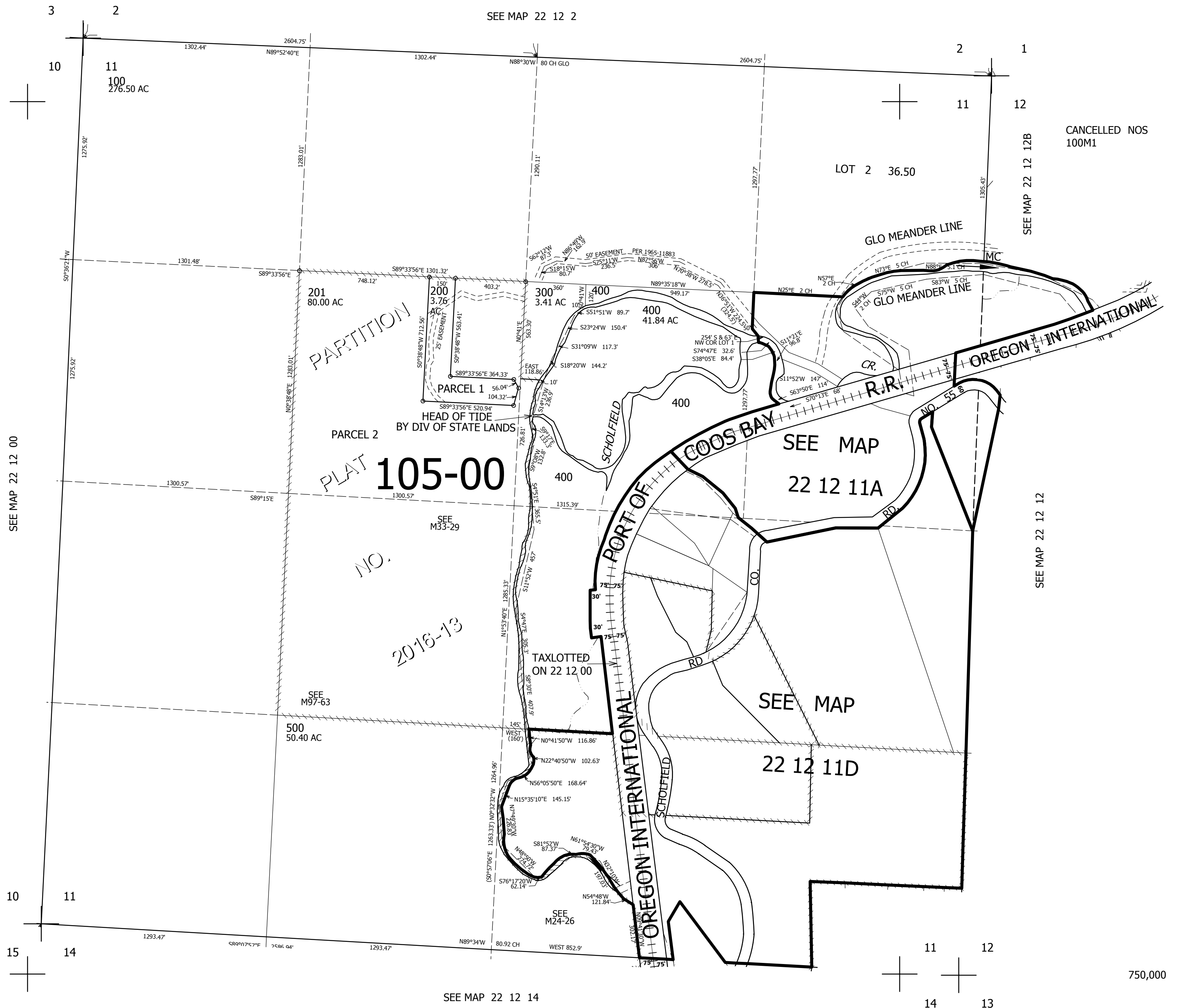
THIS MAP WAS PREPARED FOR ASSESSMENT PURPOSE ONLY.

SEC.11 T.22S. R.12W. W.M.  
DOUGLAS COUNTY

REVISED ON  
4-2-18

22 12 11  
& INDEX

1" = 400'



CANCELLED NOS  
100M1

SEE MAP 22 12 00

SEE MAP 22 12 12

SEE MAP 22 12 14

3,973,000

750,000

22 12 11  
& INDEX