

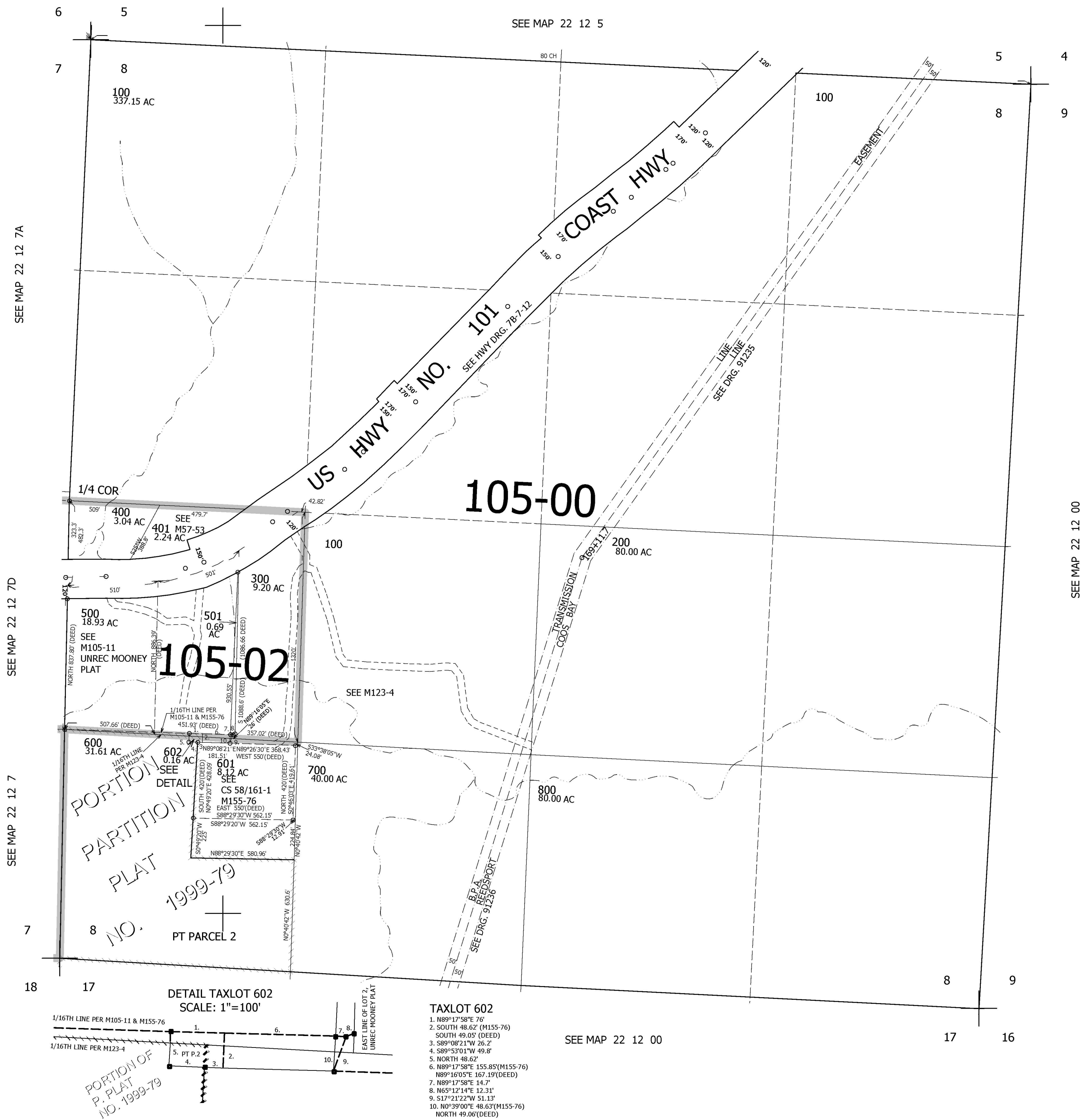
THIS MAP WAS PREPARED FOR ASSESSMENT PURPOSE ONLY.

SEC.8 T.22S. R.12W. W.M.
DOUGLAS COUNTY

1" = 400'

REVISED ON
5-28-08

22 12 8



CANCELLED NOS
700A1 800M1 603
604

SEE MAP 22 12 7A

SEE MAP 22 12 7D

SEE MAP 22 12 7

SEE MAP 22 12 00

SEE MAP 22 12 00

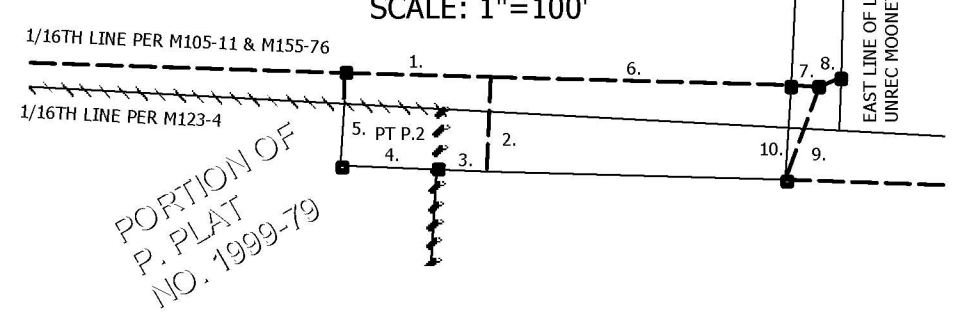
751,000

3,958,000

22 12 8

DETAIL TAXLOT 602
SCALE: 1"=100'

- TAXLOT 602**
1. N89°17'58"E 76'
 2. SOUTH 48.62' (M155-76)
 3. SOUTH 49.05' (DEED)
 4. S89°08'21"W 26.2'
 5. S89°53'01"W 49.8'
 6. NORTH 48.62'
 7. N89°17'58"E 155.85'(M155-76)
 8. N89°16'05"E 167.19'(DEED)
 9. N89°17'58"E 14.7'
 10. N65°12'14"E 12.31'
 11. S17°21'22"W 51.13'
 12. N0°39'00"E 48.63'(M155-76)
 13. NORTH 49.06'(DEED)



PORTION
PARTITION
PLAT
NO. 1999-79
PT PARCEL 2

105-02

105-00

US HWY NO. 101
COAST HWY

1/4 COR

EASEMENT

TRANSMISSION
COOS BAY

B.P.A.
REESPORT
SEE DRG. 91236

PORTION
PARTITION
PLAT
NO. 1999-79