

THIS MAP WAS PREPARED FOR ASSESSMENT PURPOSE ONLY.

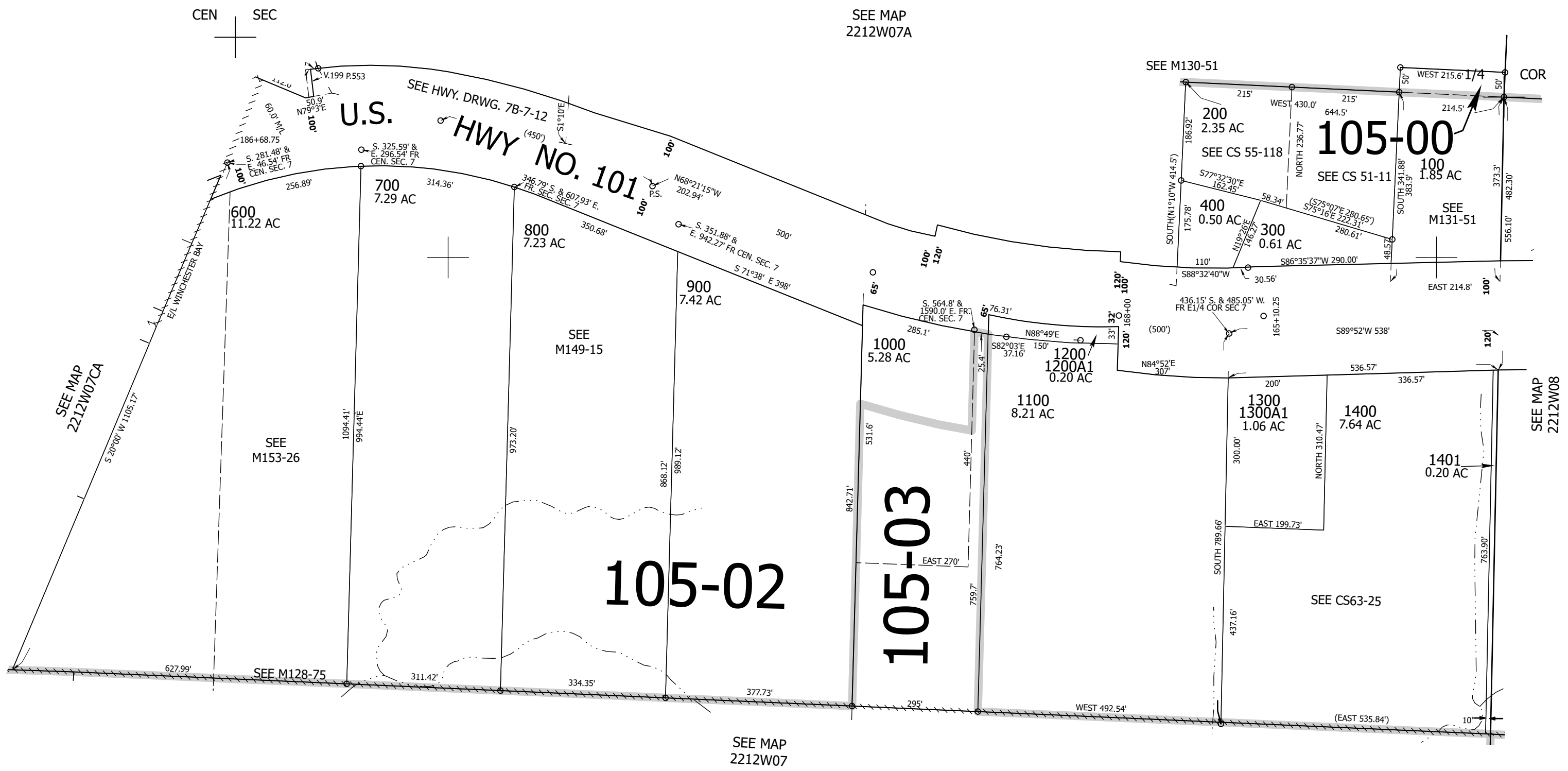
Upper Left:  
124°10'39"W 43°40'42"N  
3948696E 754546N ft

SE1/4 SEC.07 T.22S. R.12W. W.M.  
DOUGLAS COUNTY  
1" = 200'

Date Exported 2025-11-26

221207D  
& INDEX

CANCELLED NOS:  
700A1 700A2 700A3  
500



221207D  
& INDEX

Lower Right:  
124°9'44"W 43°40'9"N  
3952622E 750946N ft