

THIS MAP WAS PREPARED FOR ASSESSMENT PURPOSE ONLY.

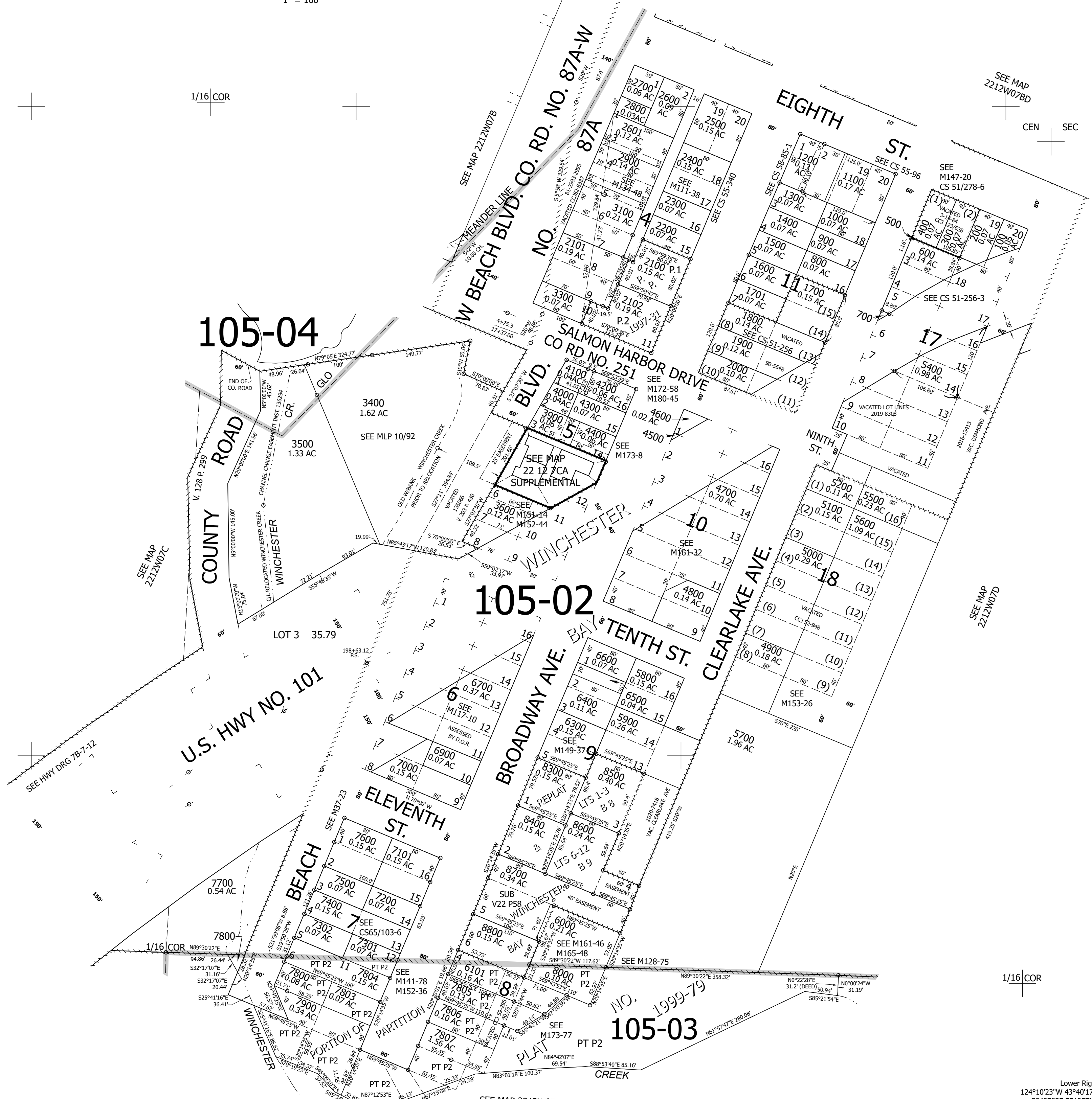
Upper Left:  
124°10'51"W 43°40'34"N  
3947808E 753696N ft

NE1/4 SW1/4 SEC.07 T.22S. R.12W. W.M.  
DOUGLAS COUNTY  
1" = 100'

Date Exported 2025-07-16

221207CA

CANCELLED NOS:  
6800 1101 3300U1  
3300U2 3300U3 3301  
3001 3000 7809  
7303 7304 3700  
7901 7802 8201  
8202 7810 6100  
6200 8100 3800  
8701 7300 7811  
7812 4201 3901  
8203 8204 7801  
3200 5300 8900  
7808 8200 7100



105-04

105-02

105-03

1/16 COR

1/16 COR

CEN SEC

SEE MAP 2212W07

SEE MAP 2212W07C

SEE HWY DRG 78-7-12

SEE MAP 2212W07D

SEE MAP 2212W07BD

Lower Right:  
124°10'23"W 43°40'17"N  
3949783E 751957N ft

221207CA

