

THIS MAP WAS PREPARED FOR ASSESSMENT PURPOSE ONLY.

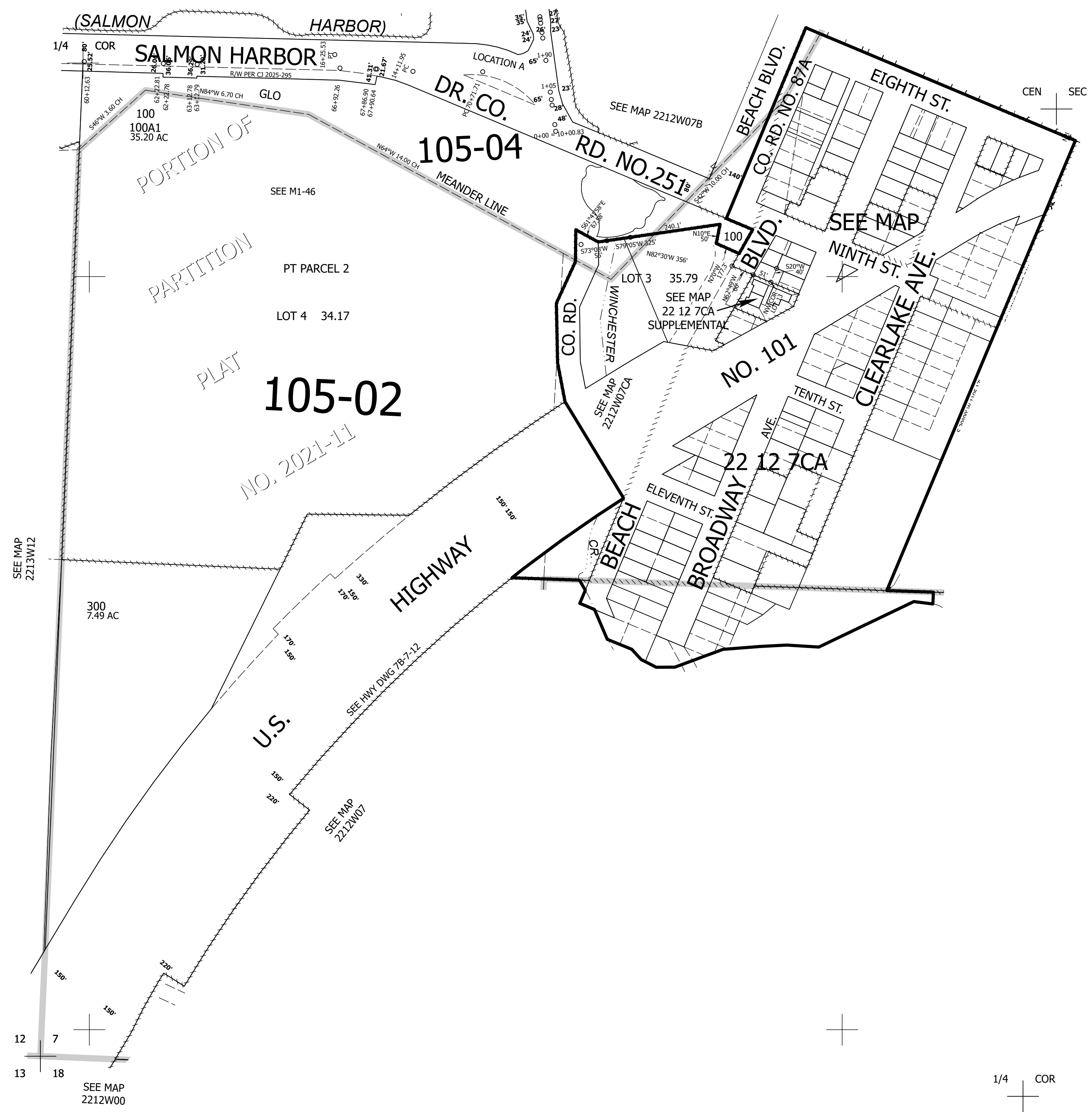
Upper Left:  
124°11'12"W 43°40'36"N  
3946273E 754050N ft

SW1/4 SEC.07 T.22S. R.12W. W.M.  
DOUGLAS COUNTY  
1" = 200'

Date Exported 2025-04-03

221207C  
& INDEX

CANCELLED NOS:  
200 200A1



SEE MAP  
2212W00

1/4 COR

221207C  
& INDEX

Lower Right:  
124°10'16"W 43°40'4"N  
3950197E 750572N ft