

THIS MAP WAS PREPARED FOR ASSESSMENT PURPOSE ONLY.

Upper Left:
124°10'47"W 43°40'47"N
3948124E 755071N ft

SE1/4 NW1/4 SEC.07 T.22S. R.12W. W.M.
DOUGLAS COUNTY
1" = 100'

Date Exported 2025-12-16

221207BD

- PARCEL 2500
1. S70°02'15"E 19.98'
 2. S69°52'09"E 10.03'
 3. S20°01'36"W 39.59'
 4. N70°01'53"W 29.98'
 5. N19°59'17"W 39.61'

- PARCEL 2800
1. S71°20'45"E 30.03'
 2. S57°03'03"W 49.67'
 3. N19°59'17"E 39.13'
 4. S70°24'30"E 29.89'
 5. N20°03'10"W 39.43'

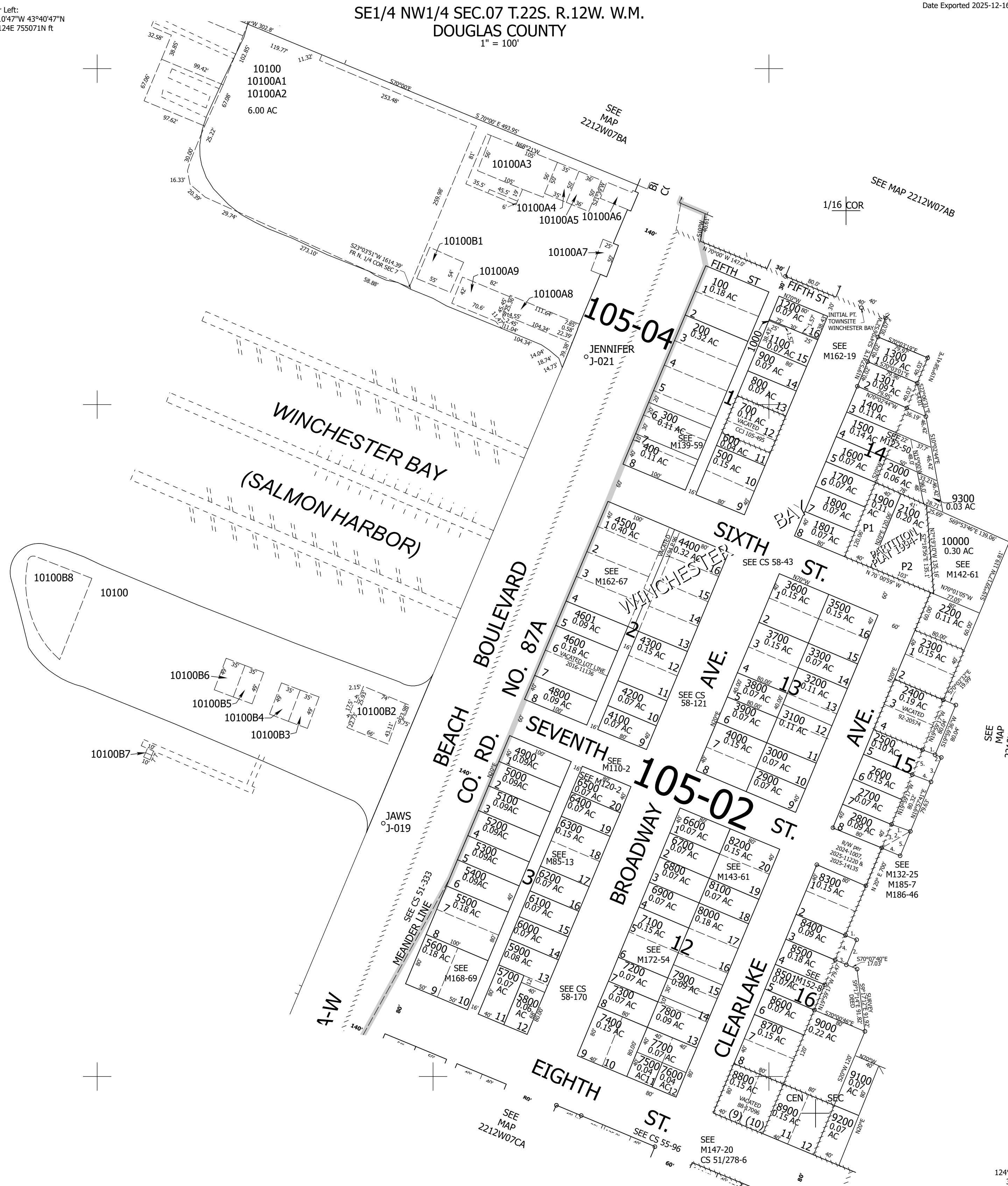
- PARCEL 8400
1. S70°00'44"E 17.96'
 2. S19°53'56"W 40.06'
 3. N72°09'35"W 18.03'
 4. N19°59'17"E 40.73'

SEE MAP
2212W07BA
1/16 COR

SEE MAP
2212W07B

1/16 COR

- CANCELLED NOS:
- 3400 9600 9700
 - 9800 9900 9400
 - 301 1302 4700
 - 7000 4400A1 9500



221207BD

Lower Right:
124°10'19"W 43°40'31"N
3950096E 753332N ft