

THIS MAP WAS PREPARED FOR ASSESSMENT PURPOSE ONLY.

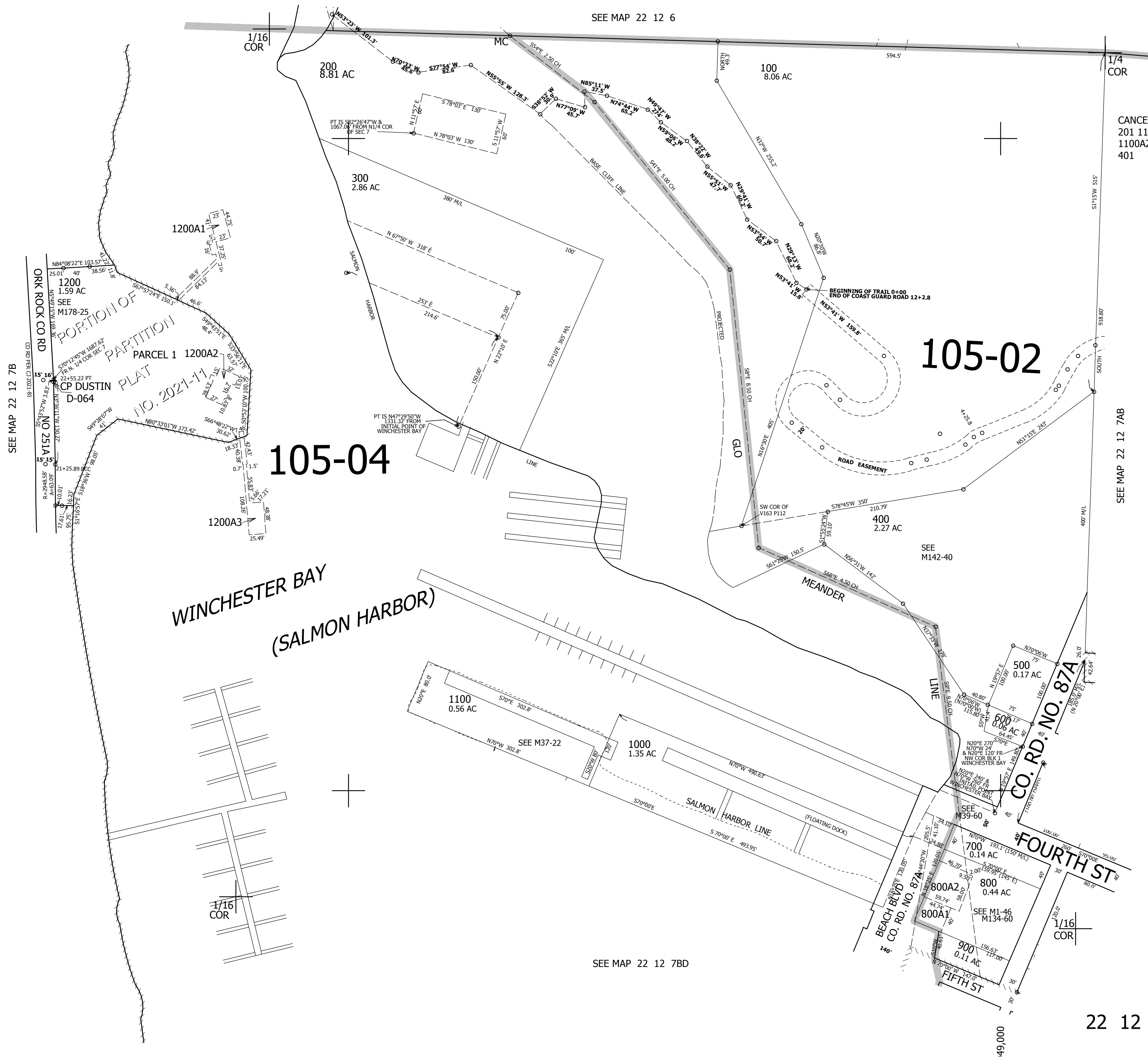
NE1/4 NW1/4 SEC.7 T.22S. R.12W. W.M.  
DOUGLAS COUNTY

REVISED ON  
3-15-21

22 12 7BA

1" = 100'

SEE MAP 22 12 6



CANCELLED NOS  
201 1100A1 200A1  
1100A2 799 400A1  
401

SEE MAP 22 12 7B

SEE MAP 22 12 7AB

SEE MAP 22 12 7BD

755,000

22 12 7BA

3,949,000