

THIS MAP WAS PREPARED FOR ASSESSMENT PURPOSE ONLY.

NW1/4 NE1/4 SEC.7 T.22S. R.12W. W.M.  
DOUGLAS COUNTY

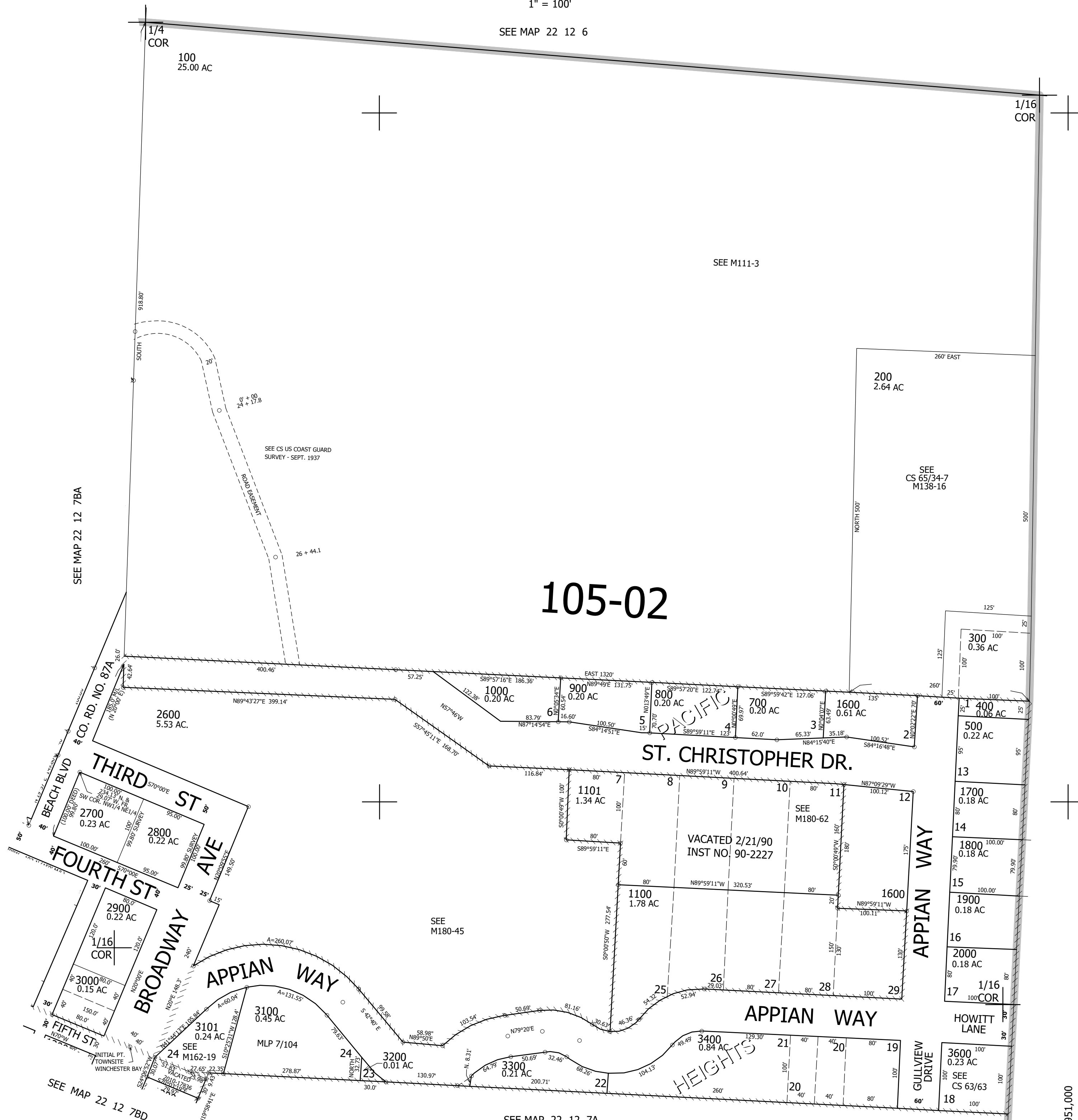
REVISED ON  
12-28-21

22 12 7AB

1" = 100'

SEE MAP 22 12 6

CANCELLED NOS  
1200 1300 1400  
1500 2100 2200  
2300 2400 2500  
3500 201 600



SEE MAP 22 12 7BA

SEE MAP 22 12 7A

105-02

755,000

SEE MAP 22 12 7BD

SEE MAP 22 12 7A

3,951,000

22 12 7AB