

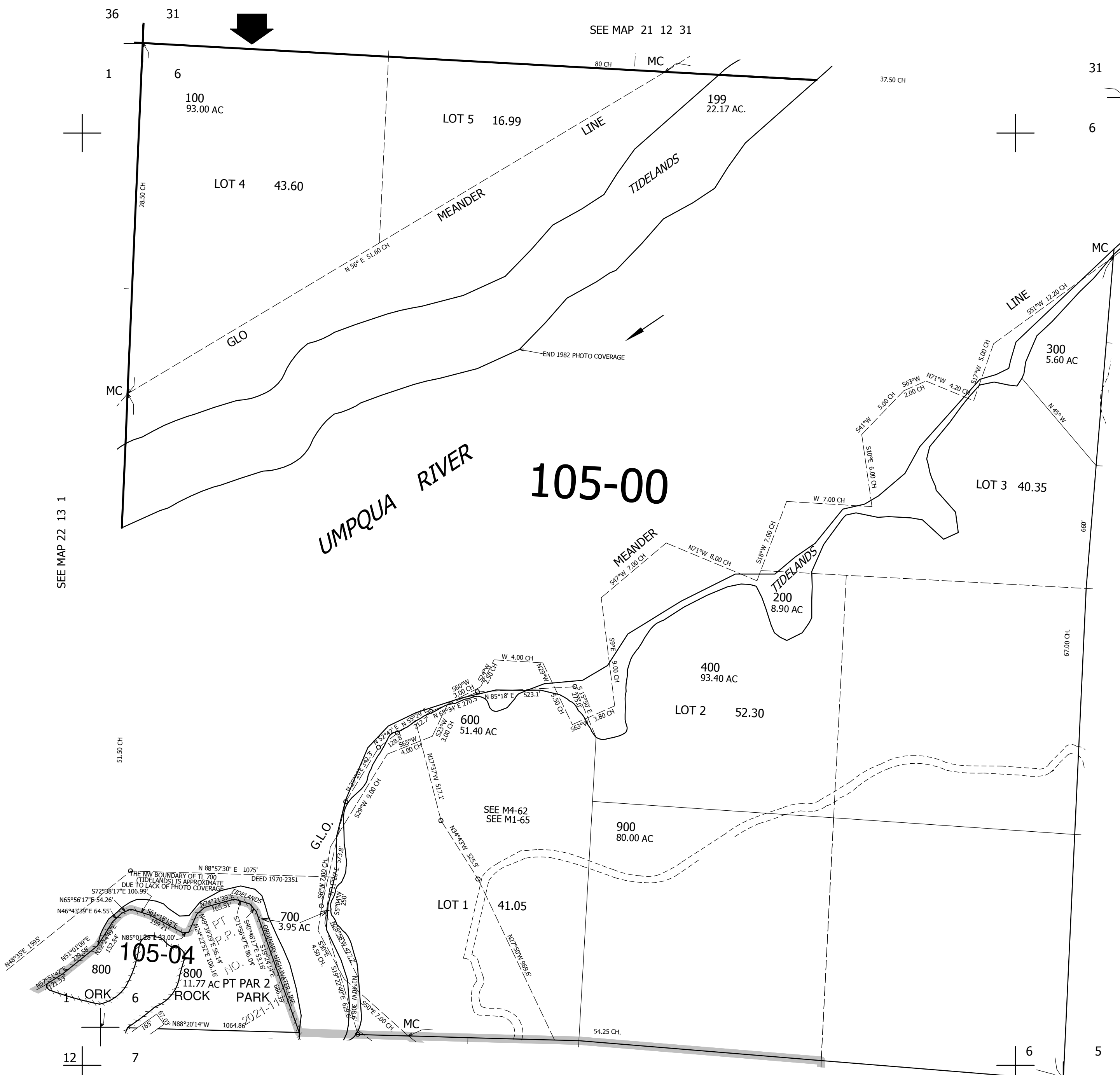
SEC.6 T.22S. R.12W. W.M.
DOUGLAS COUNTY

1" = 400'

REVISED ON
3-5-21

22 12 6

THIS MAP WAS PREPARED FOR
ASSESSMENT PURPOSE ONLY.



36
31

1
6

SEE MAP 21 12 31

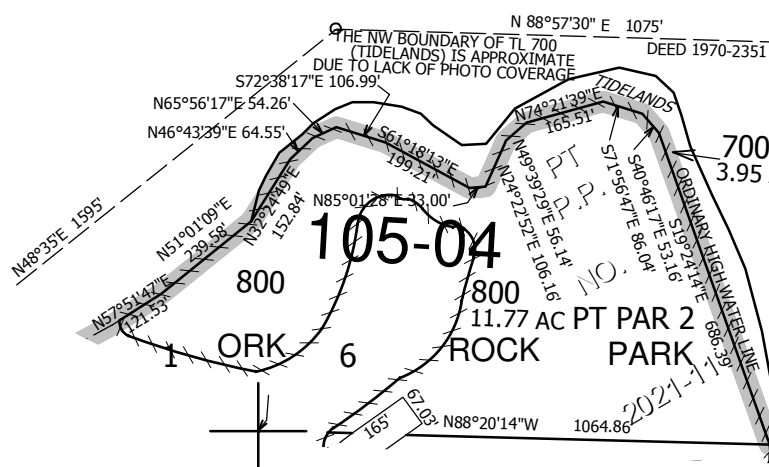
31
32

6
5

CANCELLED NOS
500 400M1 400M2

SEE MAP 22 13 1

SEE MAP 22 12 5



12
7

SEE MAP 22 12 7B

SEE MAP 22 12 7BA

SEE MAP 22 12 7AB

SEE MAP 22 12 7A

6
5

7
8

756,000

3,952,000

22 12 6