

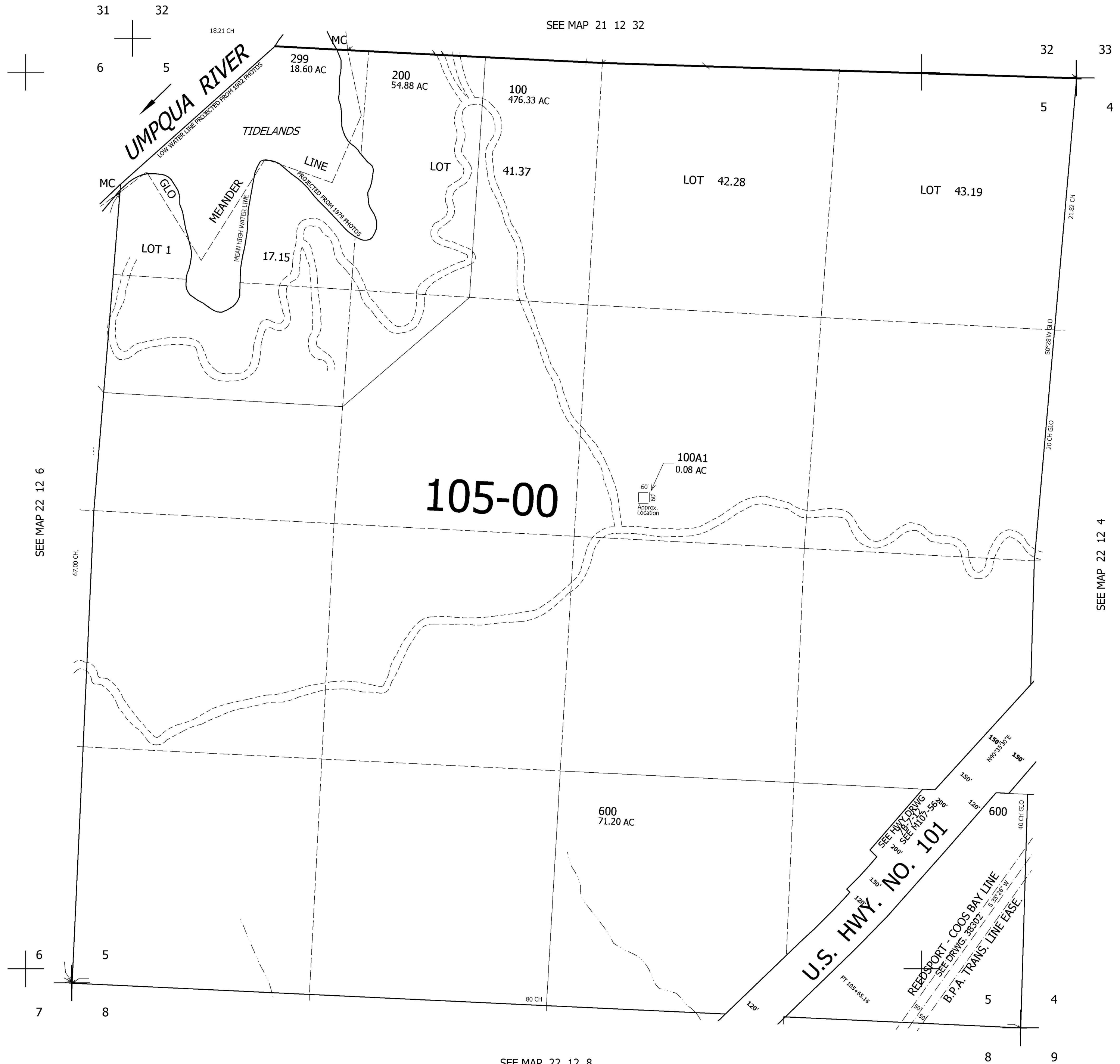
THIS MAP WAS PREPARED FOR ASSESSMENT PURPOSE ONLY.

SEC.5 T.22S. R.12W. W.M.
DOUGLAS COUNTY

1" = 400'

REVISED ON
8-7-01

22 12 5



CANCELLED NOS
300 400 500
100M1 100M2

756,000

22 12 5