

THIS MAP WAS PREPARED FOR ASSESSMENT PURPOSE ONLY.

Upper Left:  
124°7'50"W 43°41'26"N  
3961288E 758401N ft

NE1/4 SE1/4 SEC.04 T.22S. R.12W. W.M.  
DOUGLAS COUNTY  
1" = 100'

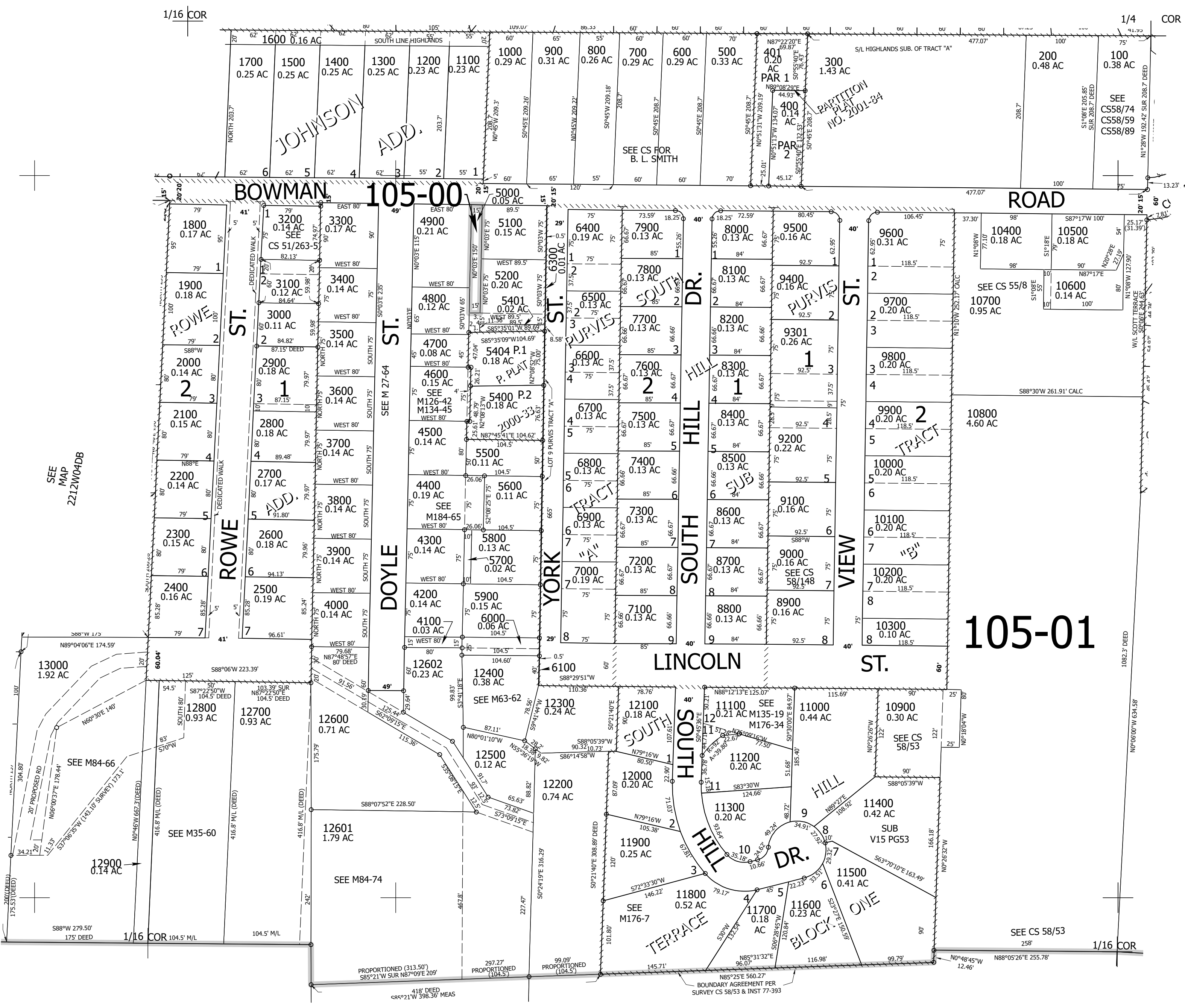
Date Exported 2025-03-31

221204DA  
Reedsport

- PARCEL 5200
- 1. S85°35'09"W 15.04'
- 2. N2°08'13"W 26.85'
- 3. N87°34'21"E 15.07'
- 4. S2°03'16"E 26.33'

CANCELLED NOS:  
12502 5300 5402  
5403 9300 6200  
12501 9201 11201  
5601

SEE MAP 2212W04AD



SEE MAP 2212W04DB

SEE MAP 2212W03CB

SEE MAP 2212W04

221204DA  
Reedsport

Lower Right:  
124°7'22"W 43°41'10"N  
3963263E 756662N ft