

THIS MAP WAS PREPARED FOR ASSESSMENT PURPOSE ONLY.

NE1/4 NW1/4 SEC.4 T.22S. R.12W. W.M. DOUGLAS COUNTY

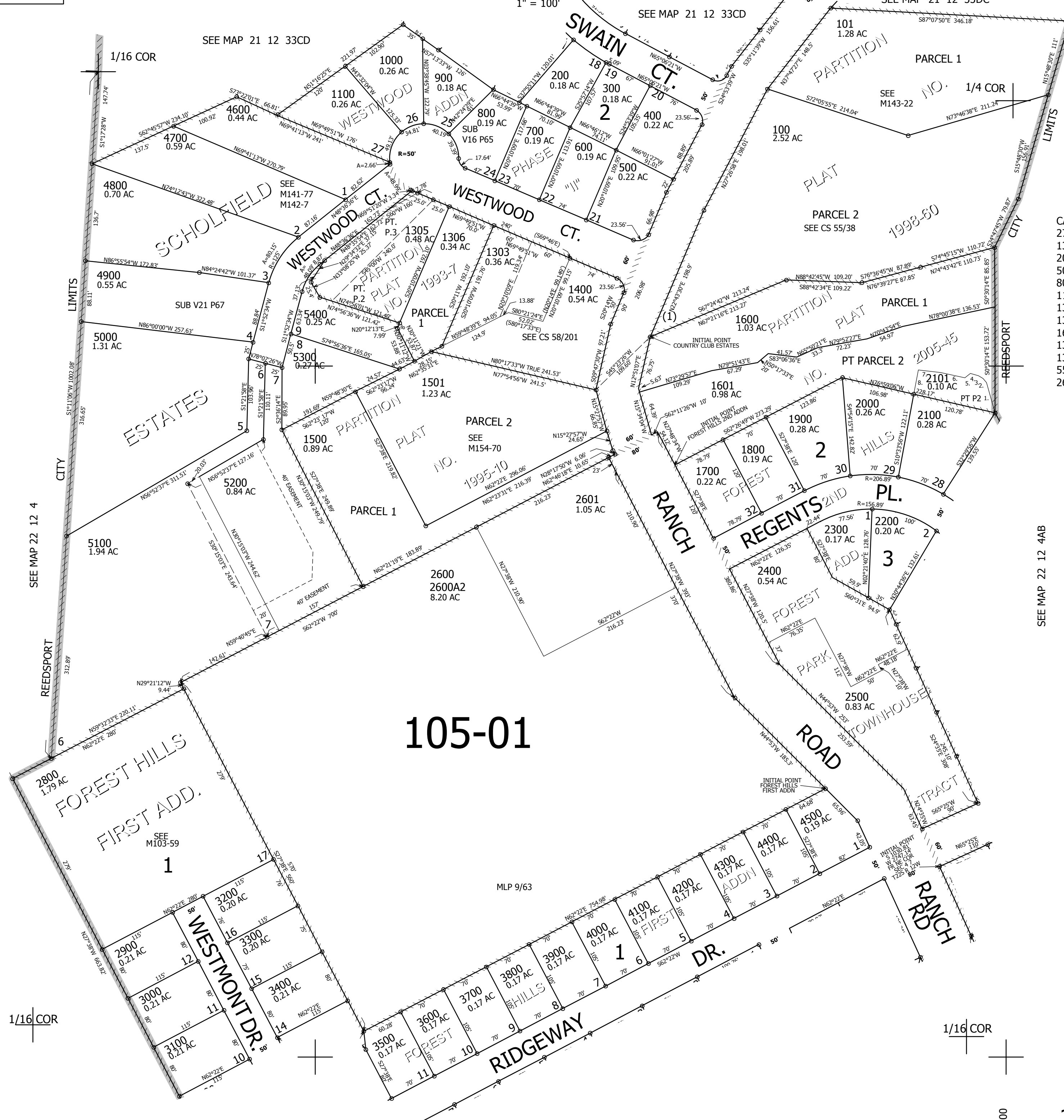
1" = 100'

REVISED ON
11-3-20

22 12 4BA REEDSPORT

SEE MAP 21 12 33CD

SEE MAP 21 12 33CD



105-01

CANCELLED NOS
 2700 2600A1 1304
 1304M1 1302 1302M1
 200M1 300M1 400M1
 500M1 600M1 700M1
 800M1 900M1 1000M1
 1100M1 1200M1 1300M1
 1306M1 1303M1 1305M1
 1306M1 1500M1 1501M1
 1600M1 1600M2 1307
 1308 1309 1301
 1300 1200 1602
 5500 5201 2600A3
 2600A4

PARCEL 2101
 1. N15°41'05"W 45.52'
 2. N42°04'02"W 7.79'
 3. N57°55'01"W 7.72'
 4. N74°22'12"W 12.02'
 5. S51°35'56"W 10.24'
 6. N77°48'57"W 36.14'
 7. N83°04'35"W 32.4'
 8. S10°33'56"W 35.52'

1/16 COR

1/16 COR

SEE MAP 22 12 4BD

3,960,000

759,500

22 12 4BA REEDSPORT